



Fall 2020

The Healing Power of Melanin

Melanin - The Healer

Khem/Melanin - The Educator
Khem/Melanin - Upwat - Opens The Way

Many of us know of melanin as the pigment protecting human skin from the harmful UV rays emitted from the sun. *It is that and more - much more!*

Some of you know of melanin as our bodily equivalent of the black holes in the universe - capturing 99.9% of all light throughout the electromagnetic spectrum. Still others praise melanin for its ability to open the gate to higher intuition and for insights into the esoteric unknown. Those who focus on the pineal gland may know melanin as a facilitator of memory, inner vision, intuition, creative genius, and spiritual Illumination.

Melanin - The Healer will take you on a slightly different journey. We will follow melanin to learn and appreciate its biological and chemical properties and functions that make it a powerful **healer** - the **antioxidant**, **nerve conduction facilitator**, and the **energy converter**. Owing to the MAAFA, the Afrikan-American community has been shepherded away from science and math. Therefore, we often favor the esoteric while abandoning the foundation.

This course calls the principle of Upwat. He was the Kemetic (Egyptian) jackal-headed deity as known as Anpu - the maker of fine judgments. As Upwat he was "The Opener of Ways." In this class we'll use Khem, Melanin, our Blackness to lead us back into the wonders of biology, chemistry, neurology and more. This becomes the foundation for later philosophical, psychological, and even spiritual illumination. Khem/Melanin will open the way to the innate scientists that reside within.





Wekesa Madzimoyo, Instructor

Copyright 2020 by [Wekesa O. Madzimoyo](#) ©

Lorem ipsum dolor sit amet, consetetur sadipscing elitr, sed diam nonumy eirmod tempor invidunt ut labore et dolore magna aliquyam erat.

Content

Class Introductions

What You Know / Want To Know

What is *Melanin*?

Where is *Melanin*?

Why *Melanin*?

How *Melanin* (functions)?

The background of the slide is a night sky with a greenish tint, filled with numerous stars of varying brightness. At the bottom, there is a dark silhouette of a forest or trees.

“Melanin is The Gift of The Cosmos”

Wekesa Madzimoyo



Class Introductions

Class Focus

Copyright 2020 by [Wekesa O. Madzimoyo](#) ©



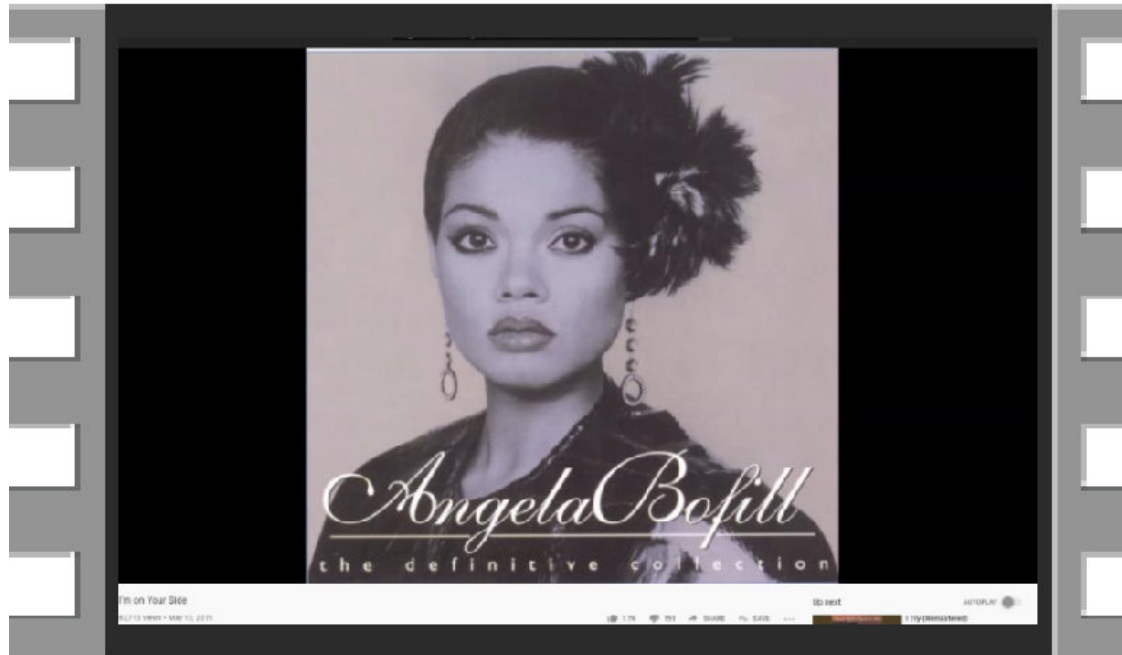
GOT MELANIN?

What You Know About Melanin?

Is the T-shirt enough?
What do you you
want to know?



© AYA Educational Institute



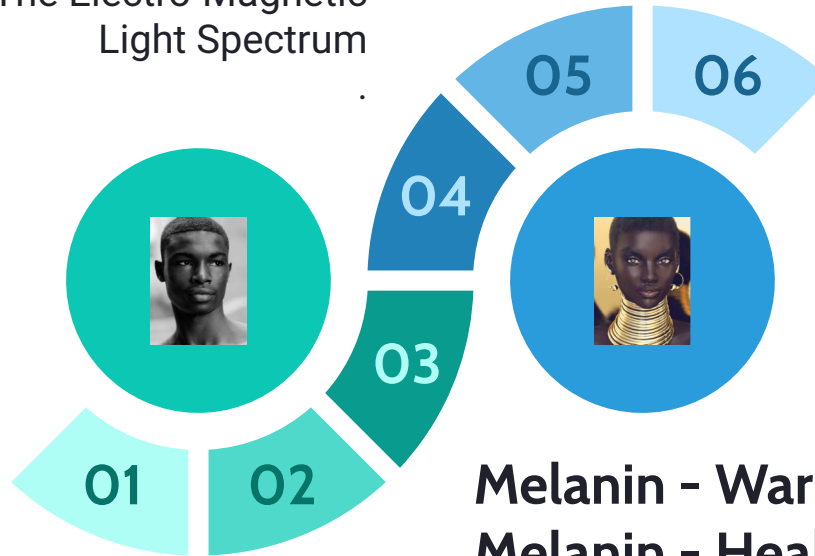
**Melanin is
on your side!**

Melanogenesis

Biological Light

Absorbing The Electro-Magnetic Light Spectrum

Biology | Khemistry
Then The Cosmos



Paying Homage

Afrikans who made Melanin popular in the Black Community.

Melanin - Warrior
Melanin - Healer
Melanin - Builder

Beyond The Solar Function

Melanin - The Healer



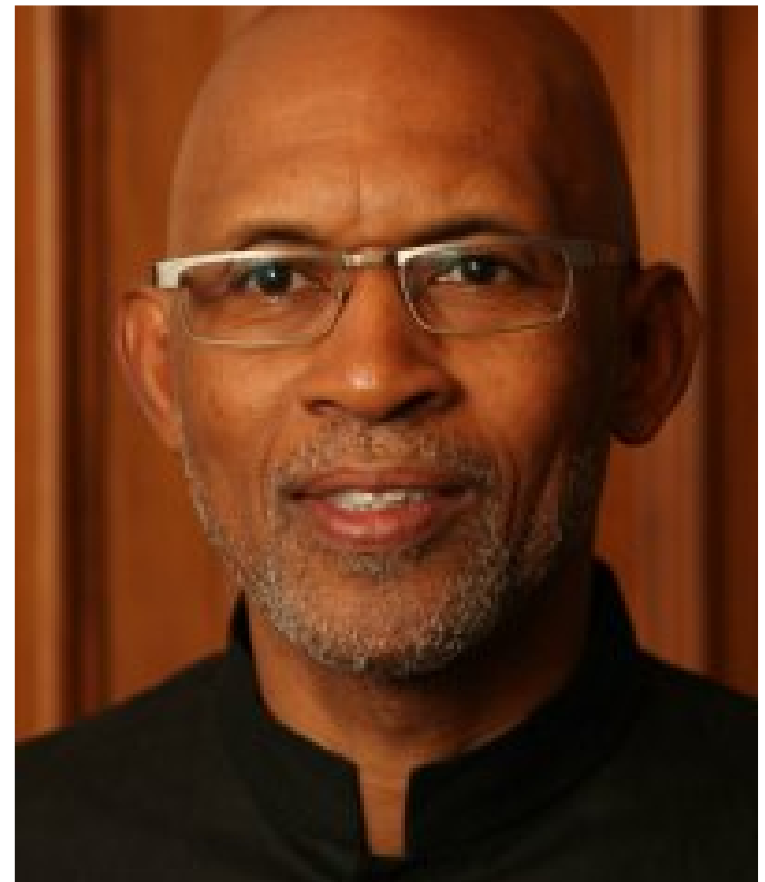
**“Children of the Sun”
Khem - Black
The Black Dot**



African children. Why? Strengthening the African family is fundamental to its survival. This is best done through the socialization and education of children.

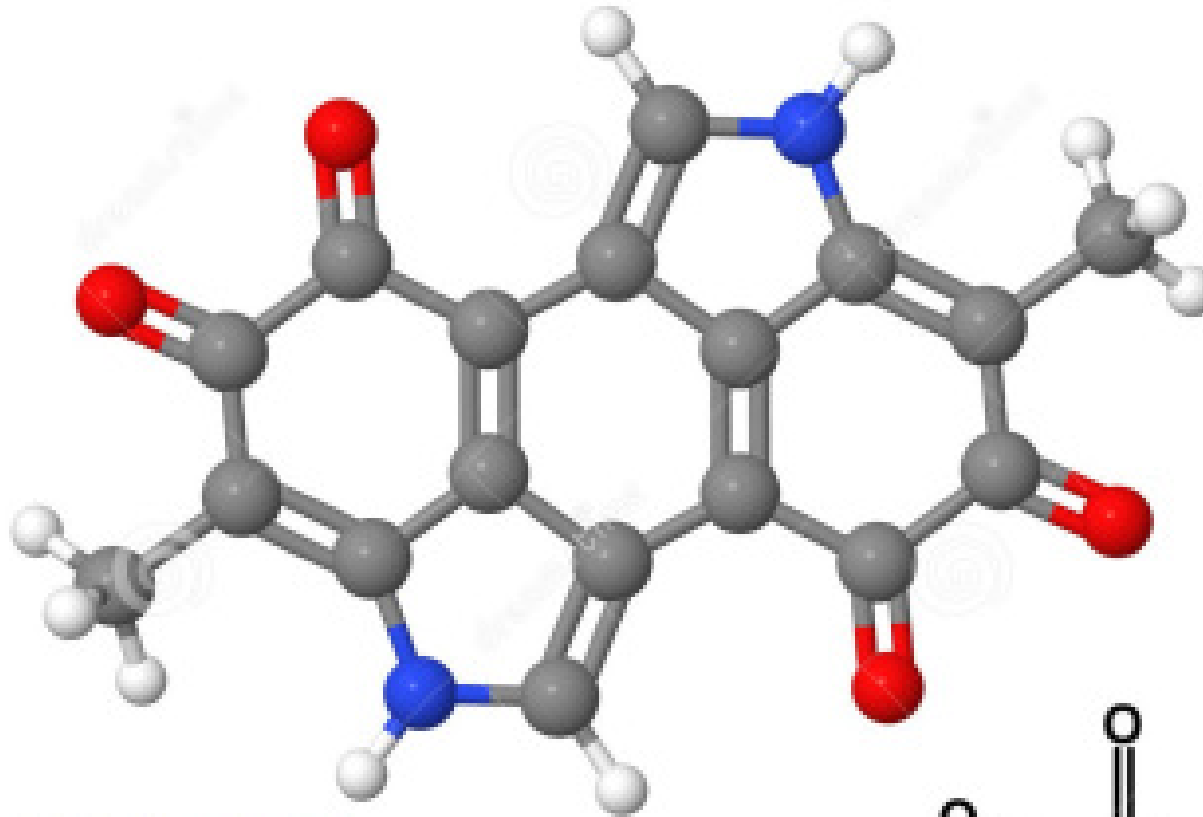
To “do Asa” is to act on those areas that impact the African family. In an unpublished paper by Dr. Hilliard in November 2001, he outlined a community’s obligation to socialize and educate African children. Shown below are the 13 tasks in his outline, requirements that the socialization process must perform to bring about desirable outcomes of being African:

1. Study and know yourself and your people.
2. Model expected behavior.
3. Expose children to the wider world.
4. Involve children in the real world of work, play, joy, pain, and truth.
5. Participate with children in organized groups that serve the interests of the larger community.
6. Give children responsibilities and hold them accountable.
7. Listen well to children’s thoughts and feelings.
8. Provide an environment with unconditional respect (not automatic approval).
9. Provide an environment where children are well enough known by significant adults so that they can get mature feedback.
10. Provide an environment for appropriate recognition for children’s efforts.
11. Provide an environment where children experience unconditional love.
12. Maintain structures linking elders and youth.
13. Tell and retell the story of one’s family and people, so that the children can locate themselves in time, in space, in context, and in destiny.



Tony Browder

THE MELANIN MOLECULE

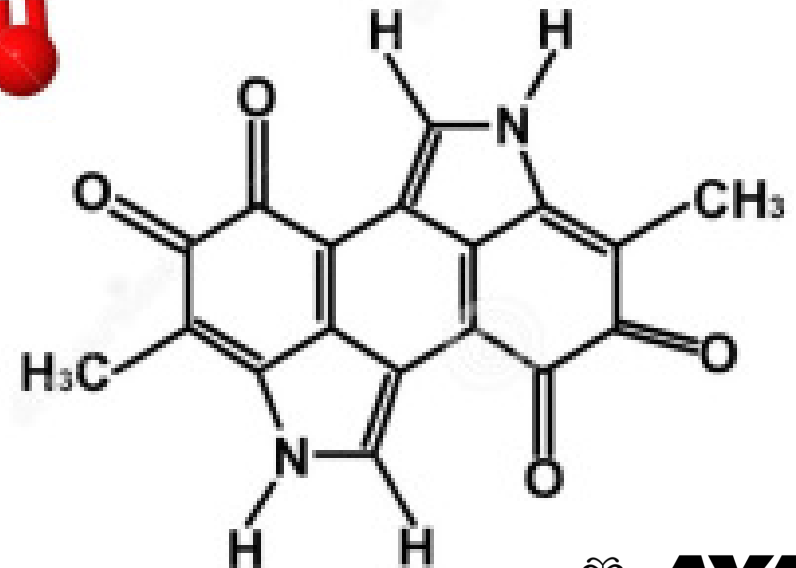


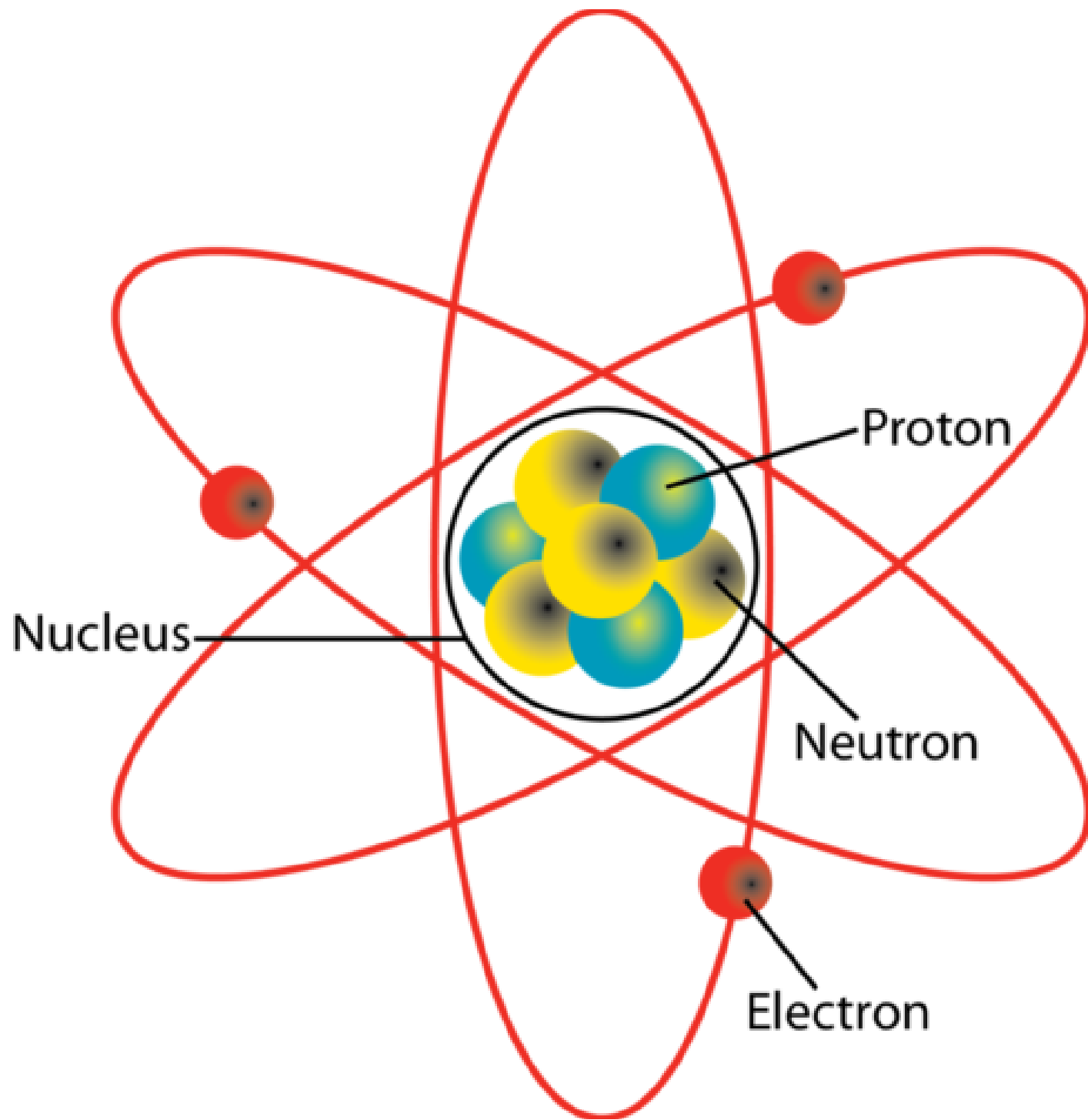
Fact: there are over 900,000 patents w/ the word "MELANIN" in them. (Keyamsha.com)

Keyamsha



"A lack of Melanin is directly related to the malfunctioning of the Central Nervous System (CNS). Melanin forms a network between all the Spiritual-Material planes of the Cosmos.," Joseph A. Bailey, II, M.D.





KNOW THYSELF

MELANIN



a.k.a.

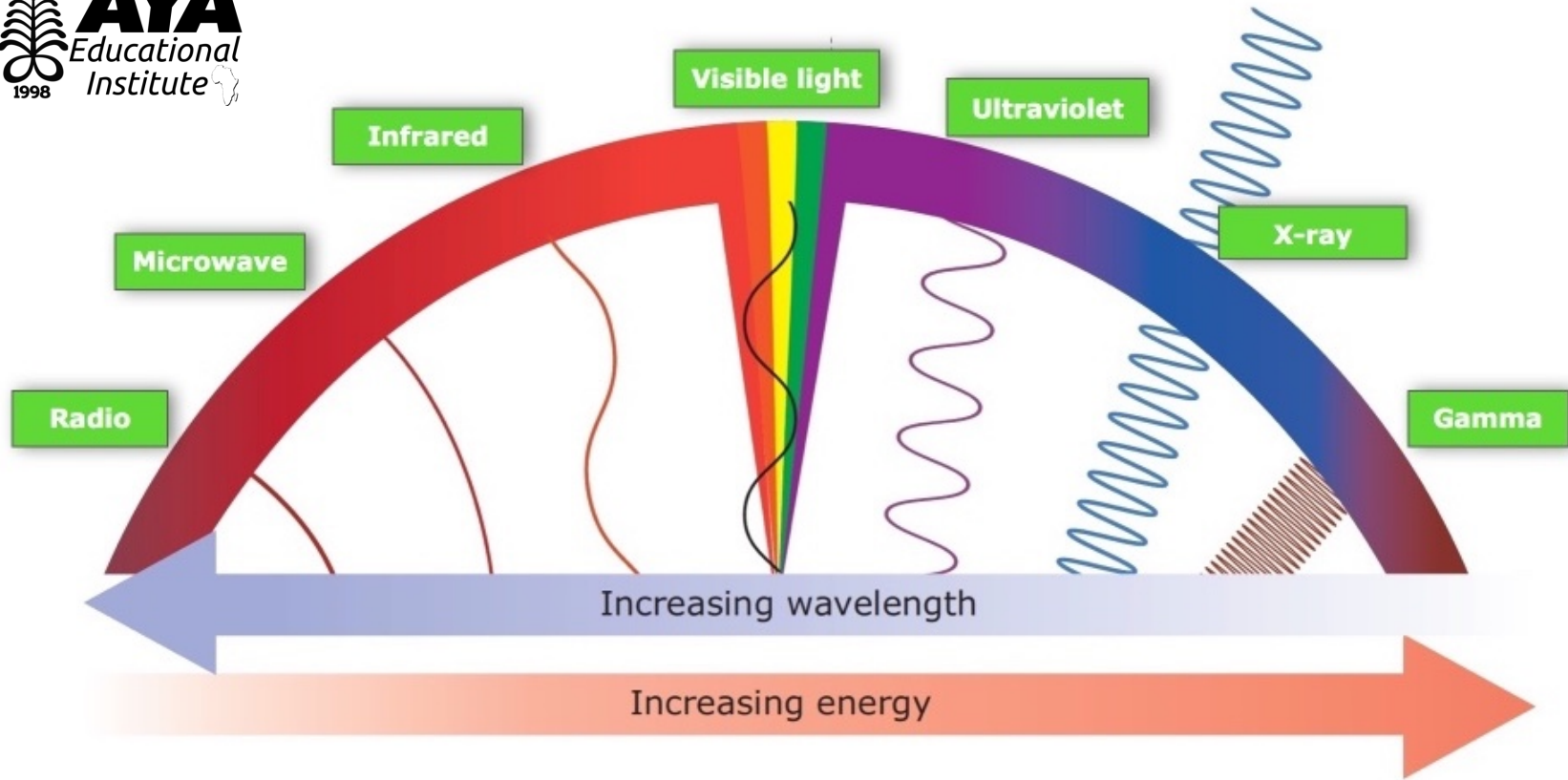
BLACK GOLD

a.k.a.

FOSSIL FUEL



THE ELECTROMAGNETIC SPECTRUM



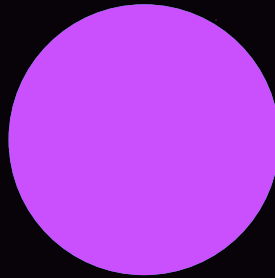
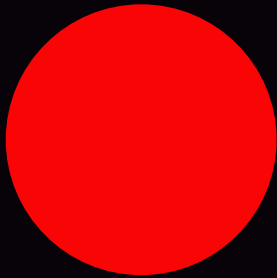
© Copyright. University of Waikato. | www.sciencelearn.org.nz

“Melanin is Biological Light!”

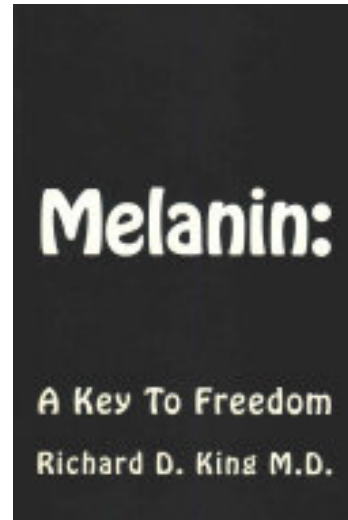
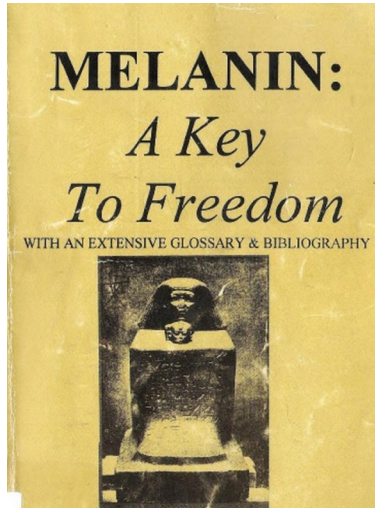
Dr. Jewel Pookrum

BLACK

Light ?

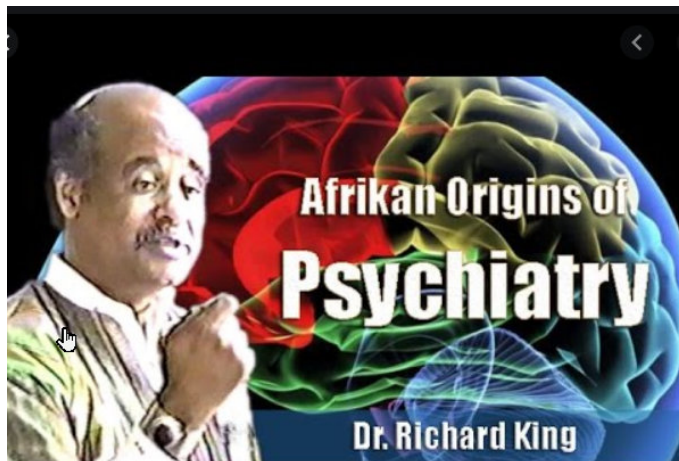


Dr. Richard King, MD



The black dot!

Dr. Richard King | Afrikan Origins of Psychiatry (Dec1993)



A Study of ancient African history reveals an early African definition of the human Melanin System as a whole body Black Melanin System that serves as the eye of the soul to produce inner vision, true spiritual consciousness, creative genius, beatific vision, to become Godlike, and to have conversation with the immortals (Ancestors). The purpose of ancient African education was to provide knowledge and development of the will of the student that allowed salvation (freedom) of the soul from the fetters (chains) of the physical body (George G. M. James, Stolen Legacy)

MELANIN:

THE CHEMICAL KEY
TO BLACK GREATNESS



BLACK GREATNESS SERIES

THE HARMFUL EFFECTS OF TOXIC DRUGS
ON MELANIN CENTERS WITHIN THE BLACK HUMAN

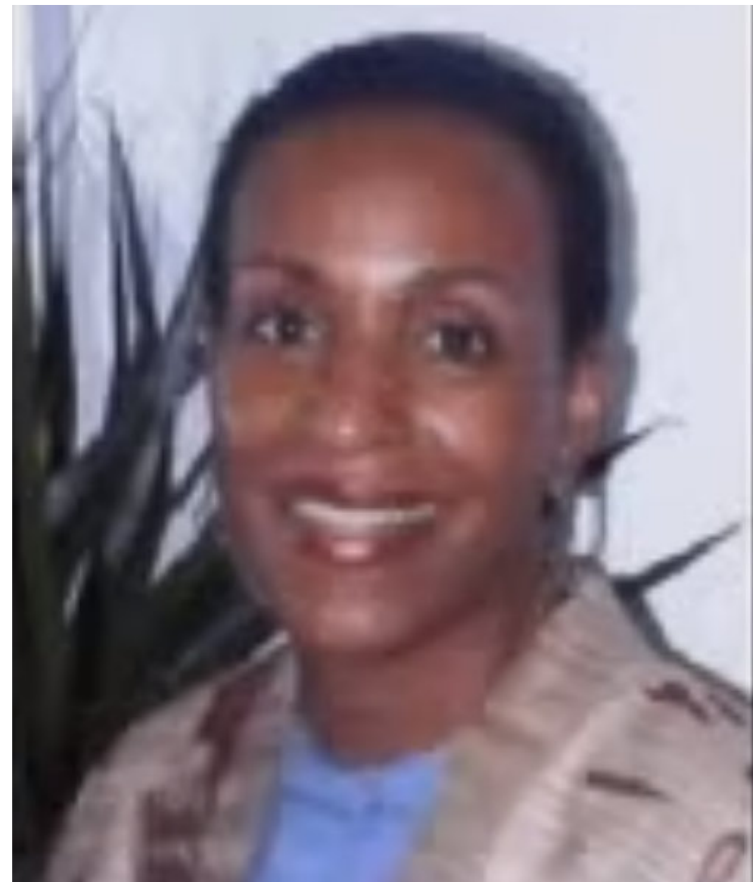
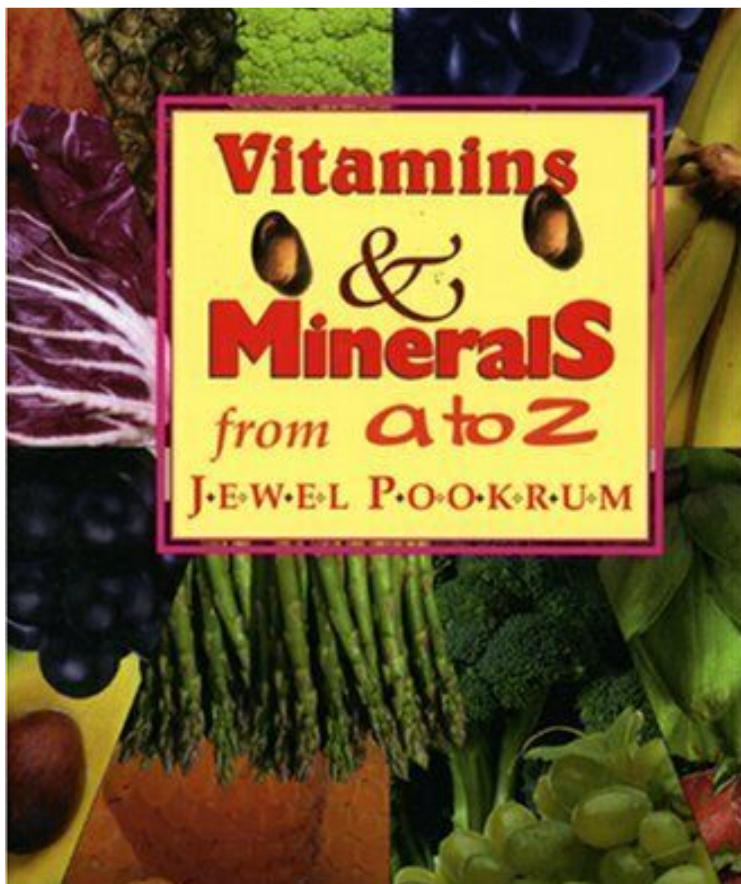
VOLUME 1



By Carol Barnes
Senior Research Chemist

Dr. Carol Barnes





**“Melanin is biological
living light.”**

Active metabolic process!

**Pineal gland is the core regulator
for the activity of melanin - via
serotonin and melatonin.**

[Part 1](#)

[Part 2](#)

[Part 3](#)

[Part 4](#)

[Part 5](#)

[Part 6](#)

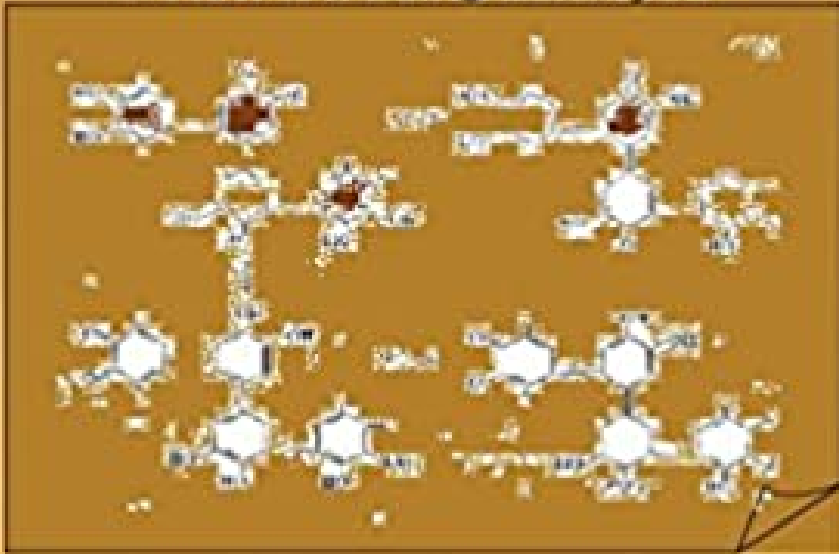
[Part 7](#)

[Part 8](#)

[Part 9](#)

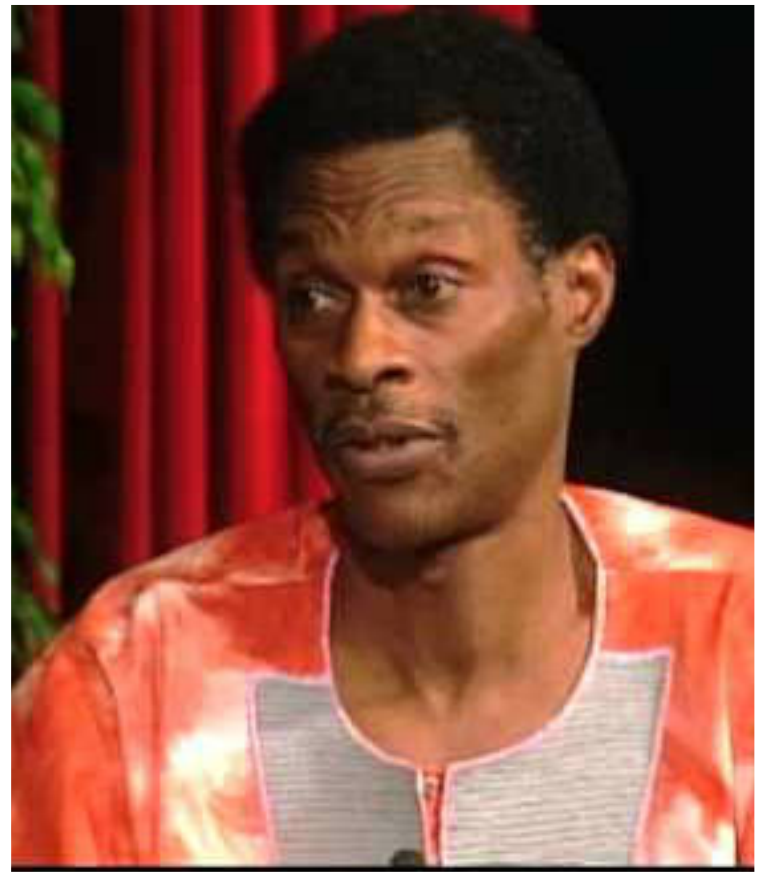
What Makes Black People Black!

- How to protect & nourish it
- Difference between Black and White People
- How it causes emotional behaviors and thoughts
- How it is being destroyed

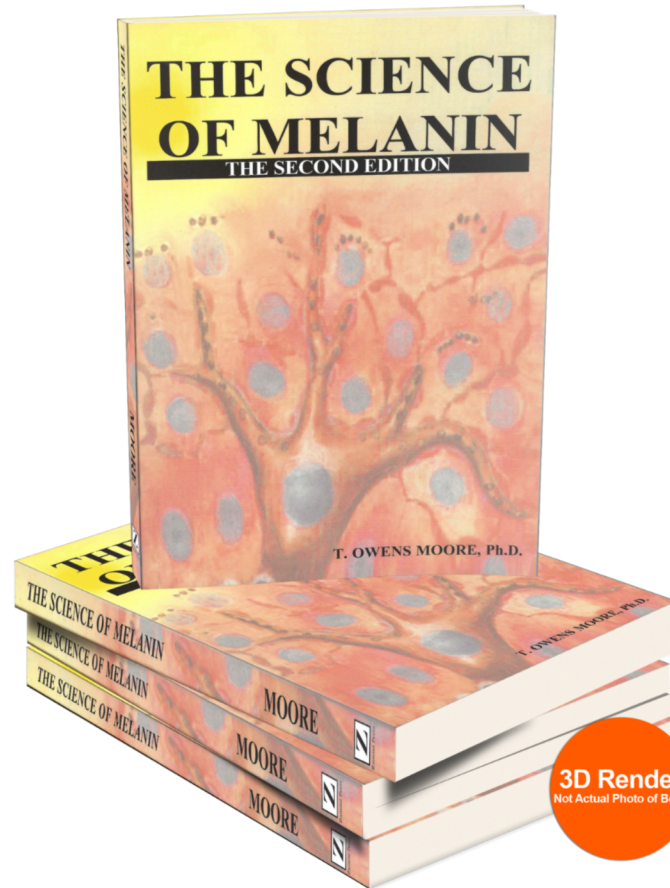
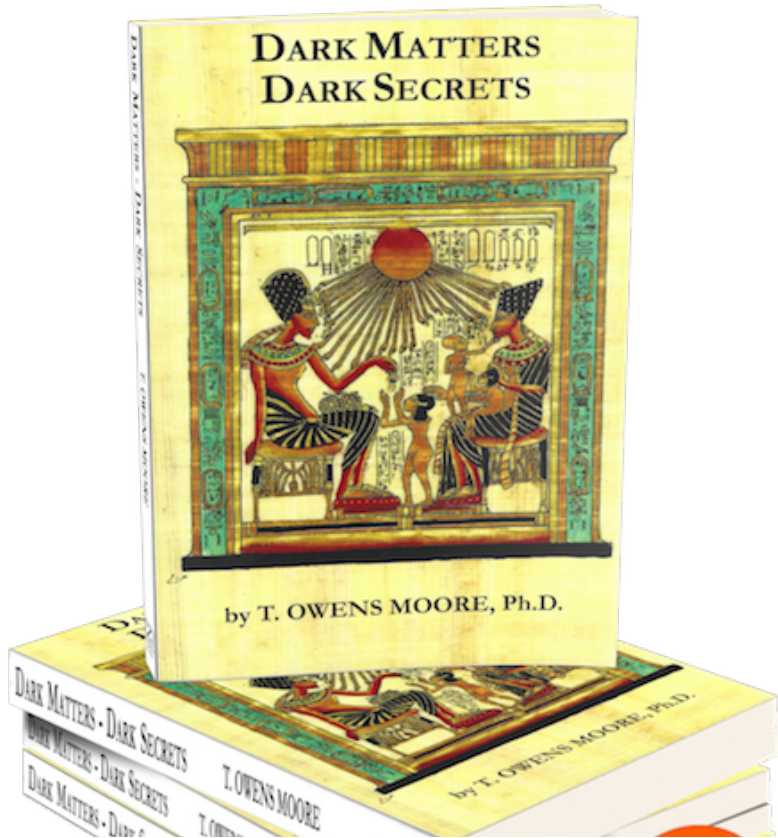


Llaila Afrika

Copyrighted Material

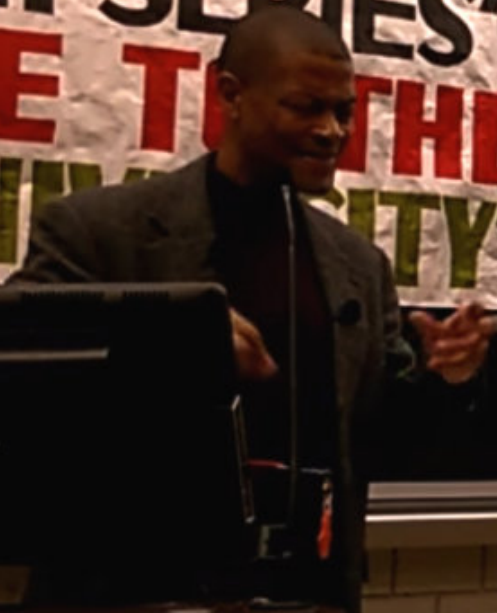


**“Melanin is biological
living light.”
Active metabolic
process!**



3D Render
Not Actual Photo of Book

TH SERIES"
ME TO THE
UNIVERSITY"



Melanin Functioning

- Antioxidant
- Nerve Conduction Facilitator
- Energy Transformer



... of heru..Science of the brain Dr. T. Moore

, 2016

👍 24

💬 0

Download 720

SHARE SAVE ...

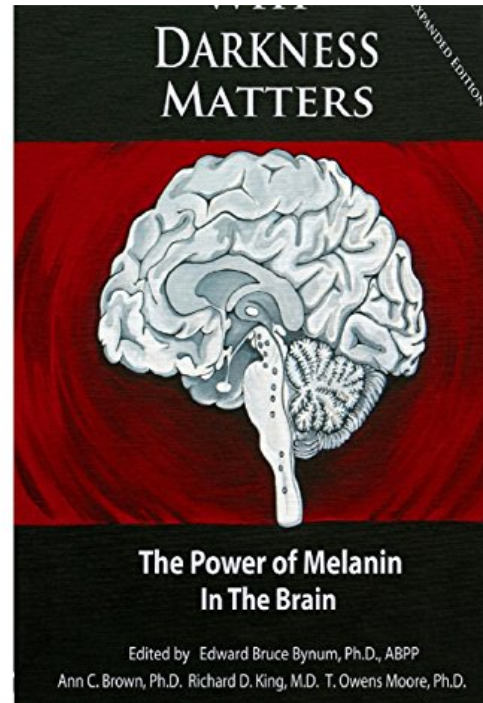
Up next



Black Before Color
The African Discov
Odd Salon



Dr. Frances Cress
Welsing



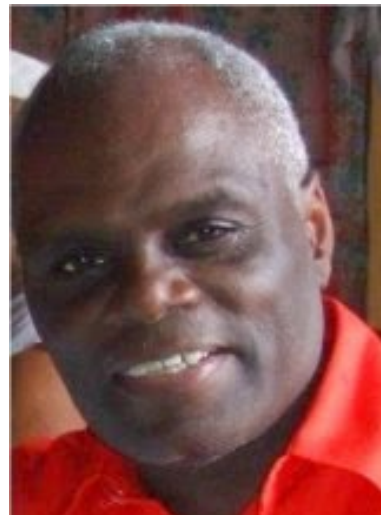
Edward Bruce
Bynum



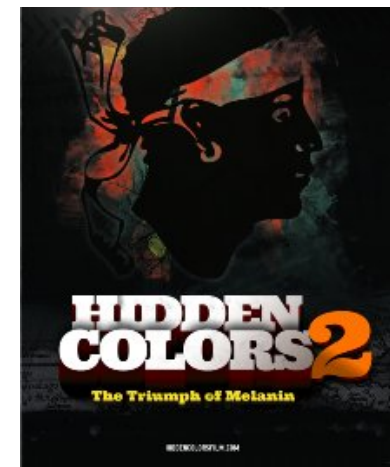
Dr. Anne Brown

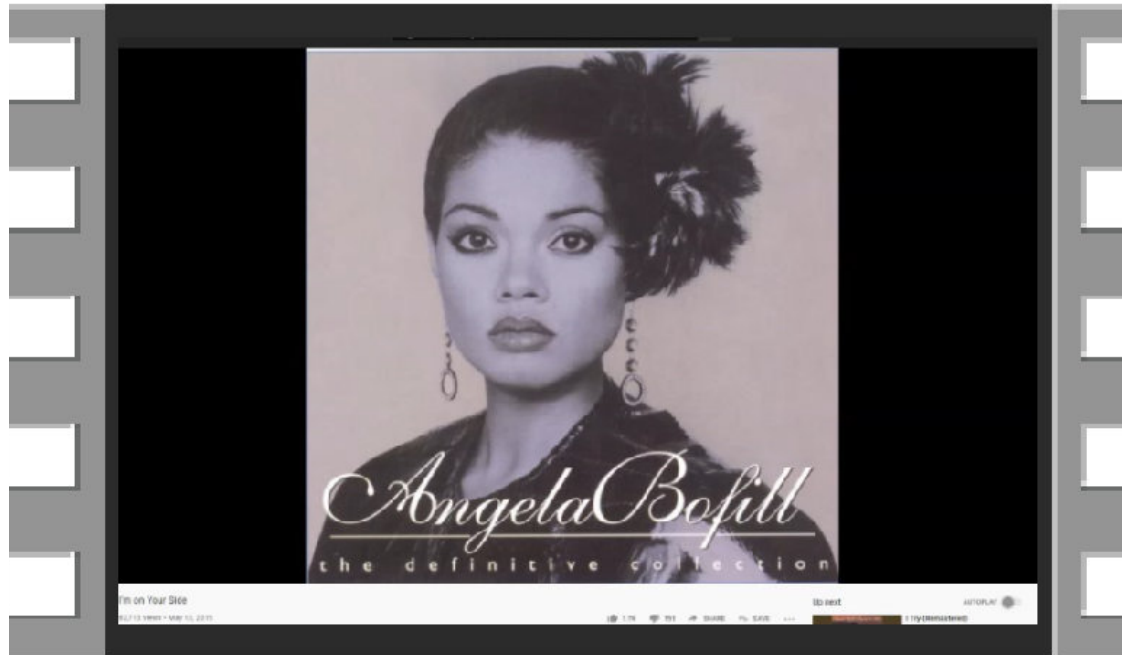


Deborah Maat



Dr. Hunter Adams





**Melanin is
on your side!**



Where is Melanin?

Copyright 2018 by AYA Educational Institute ©

Lorem ipsum dolor sit amet, consetetur sadipscing elitr, sed diam nonumy eirmod tempor invidunt ut labore et dolore magna aliquyam erat.

Body Healing

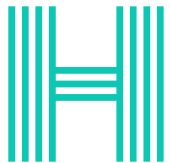
What are the organs of the human body?

How does melanin help them perform optimally and help them heal?

In an organ, different tissues work together to carry out a particular function. These are the main organs, as well as their primary function:



- The **brain** controls thoughts, memory and other organs.
- The **heart** pumps blood around the body.
- The **lungs** separate oxygen from the air and remove carbon dioxide from the blood.



- The **stomach** helps to digest food.
- The **intestines** absorb nutrients from food.
- The **liver** removes poisons from the blood.
- The **kidneys** filter blood and produce urine.
- The **bladder** stores urine.
- The **skin** protects and contains the other organs.

J. Anat. Lond., (1968), 97, 2, pp. 243–253

With 2 plates and 4 text-figures

Printed in Great Britain

243

A study of the melanocytes and melanin in a healing deep wound

BY R. S. SNELL

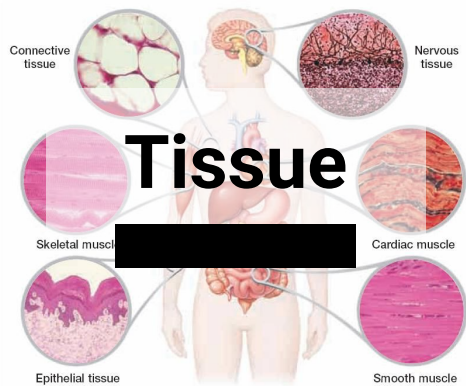
Department of Anatomy, Medical School, King's College, Newcastle upon Tyne 1

The histological changes which occur in the healing of a skin wound by secondary intention have been the subject of many investigations. Only recently, however, has any work been carried out on the activity of the melanocytes and the appearances of melanin during this process. The present experiment is a study of the density and morphology of the melanocytes and the amount of free melanin present in different areas of a deep skin wound in the guinea-pig during the repair process.



Albino

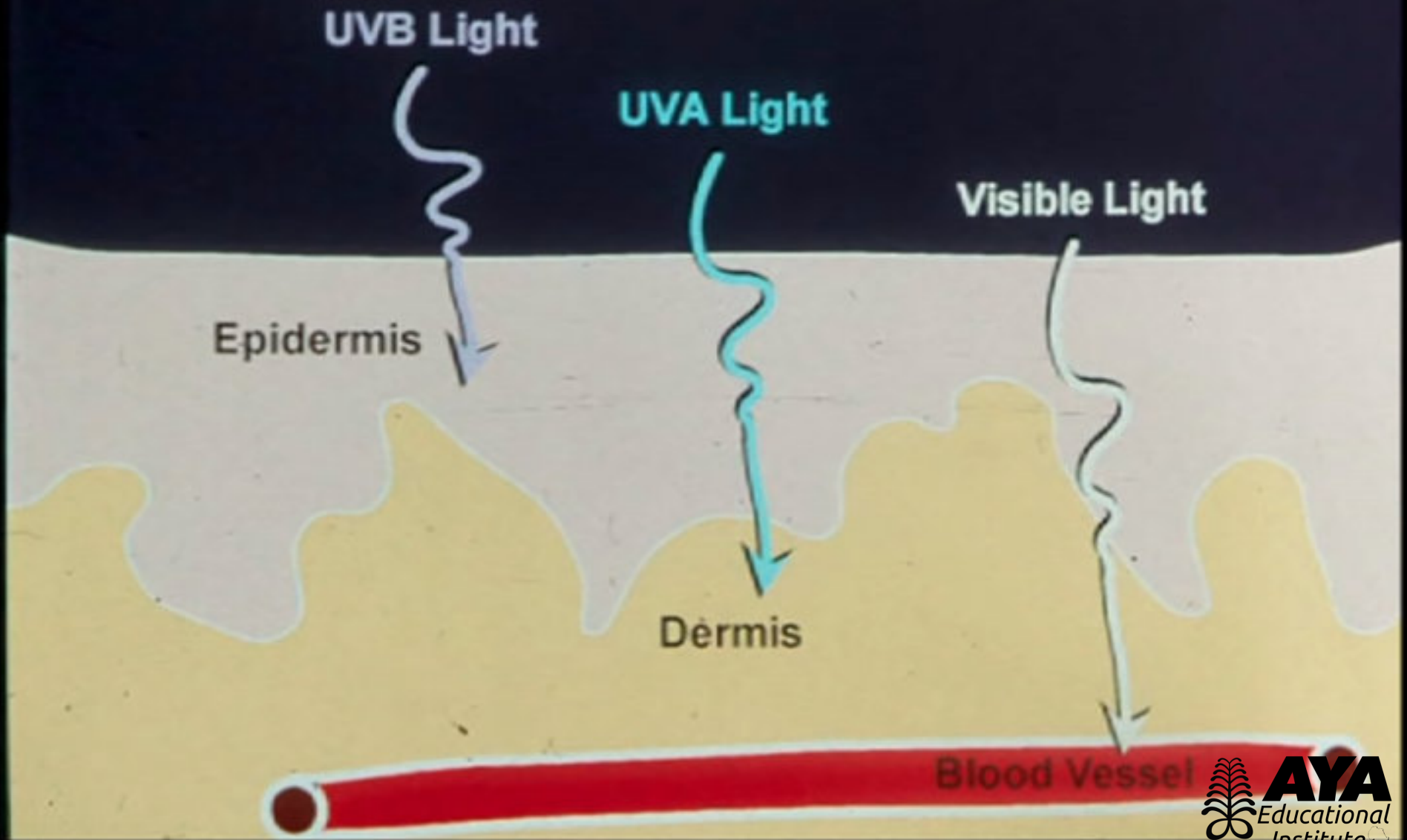
Human Body Tissues

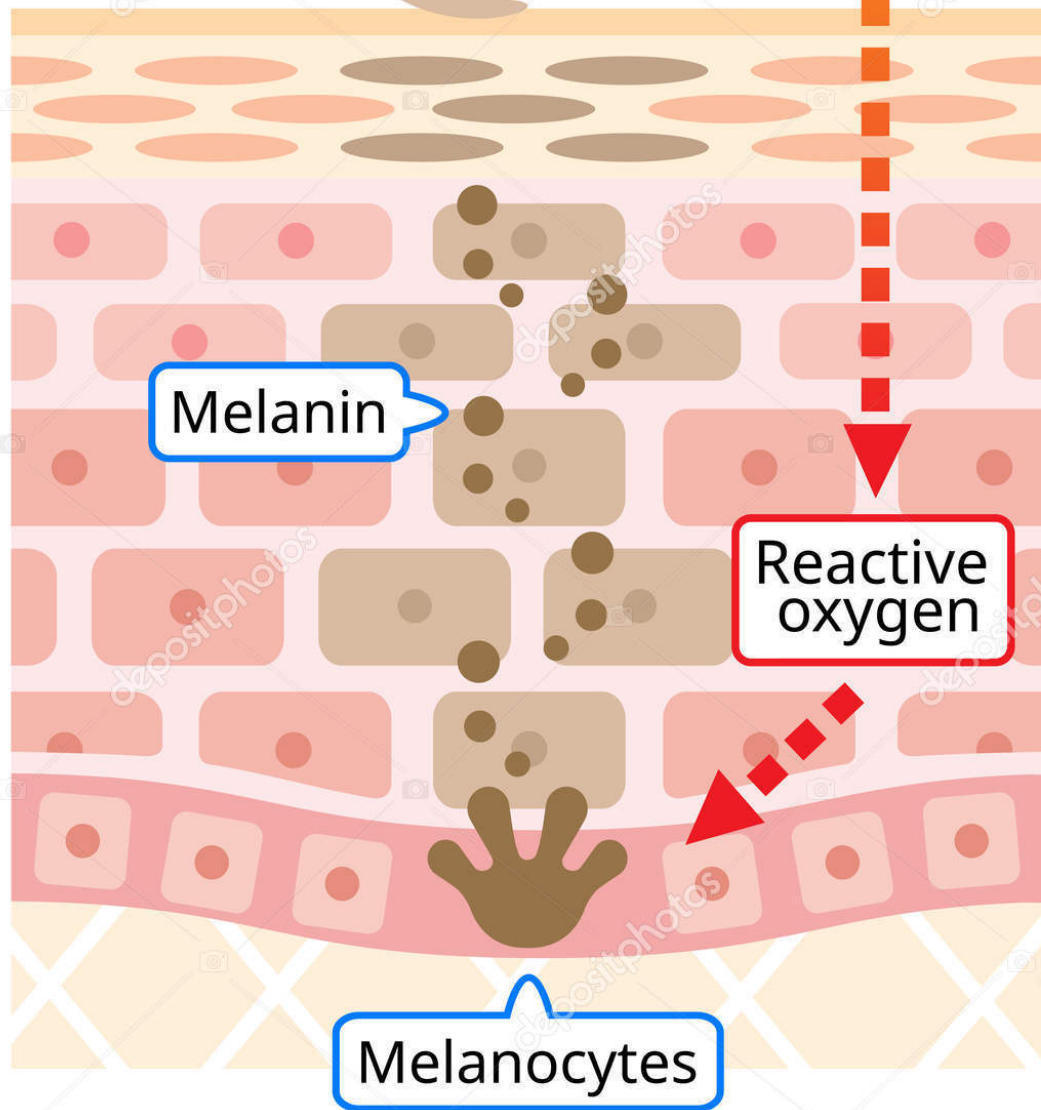




Albino

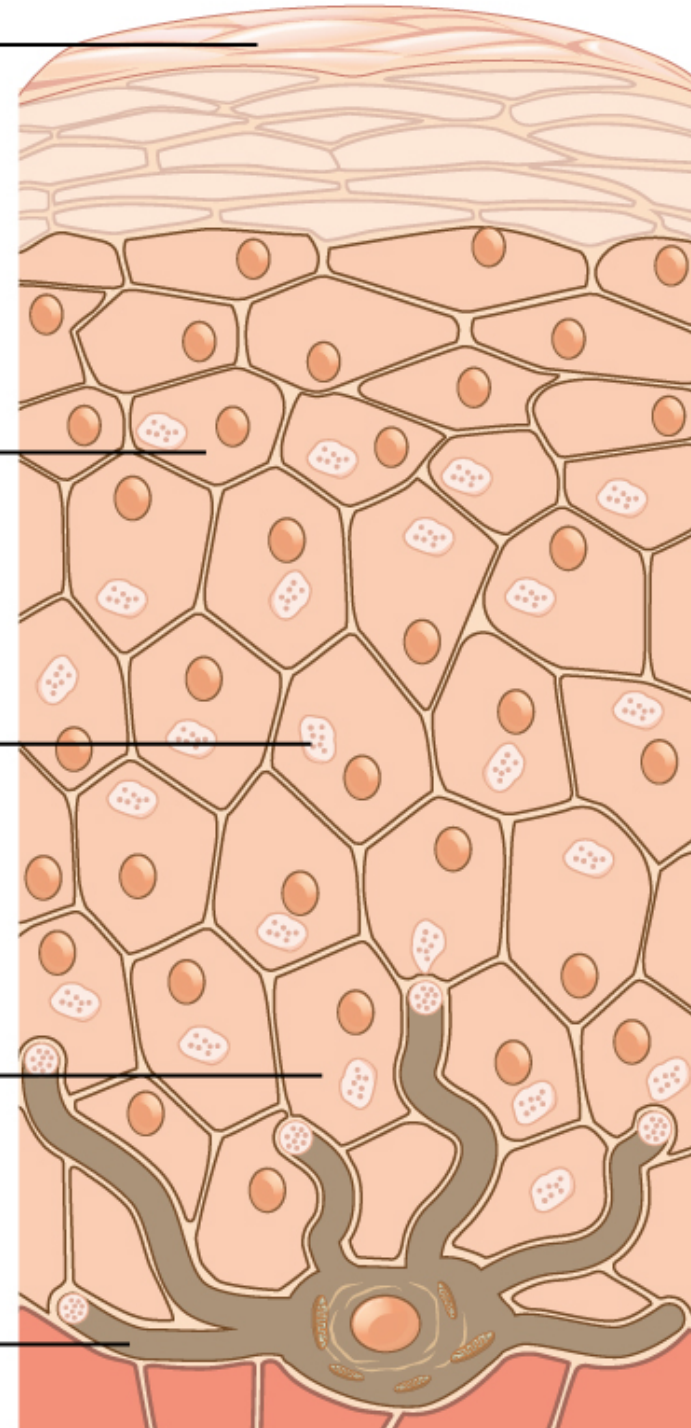
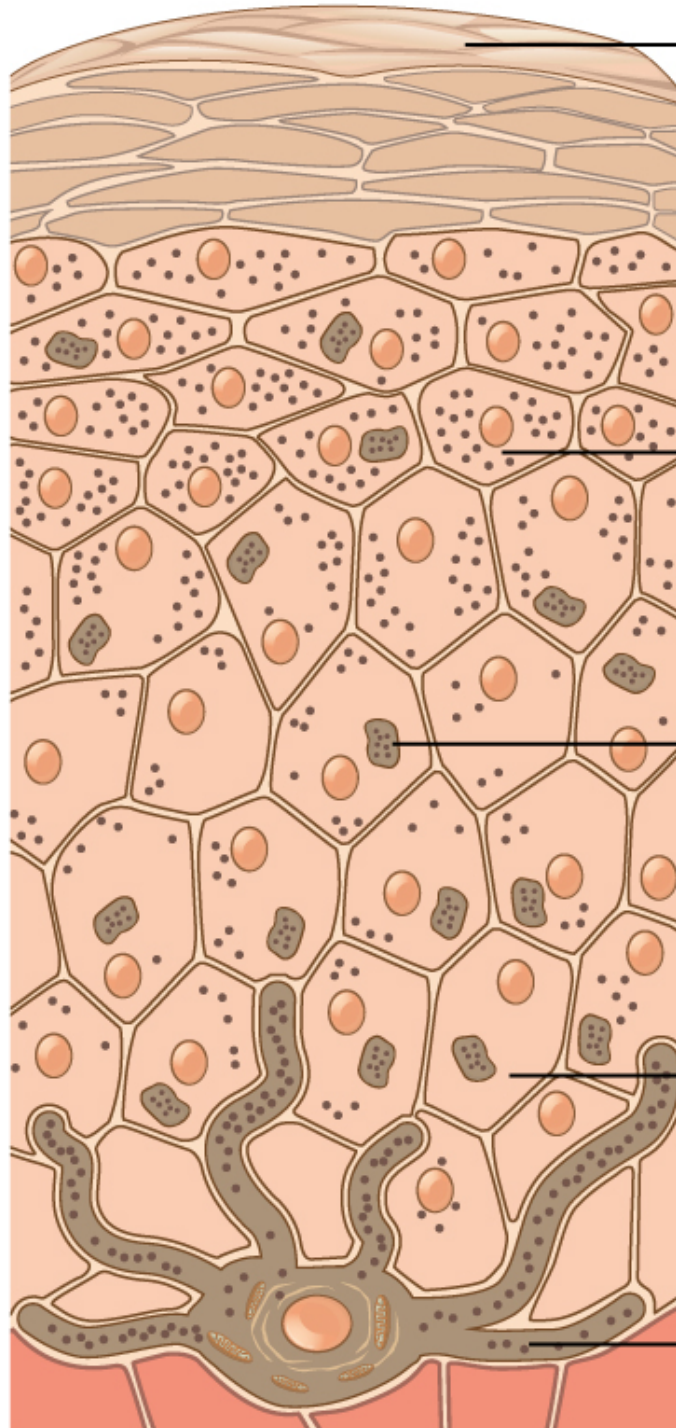
Light Penetrance in the Skin





Dark

Light



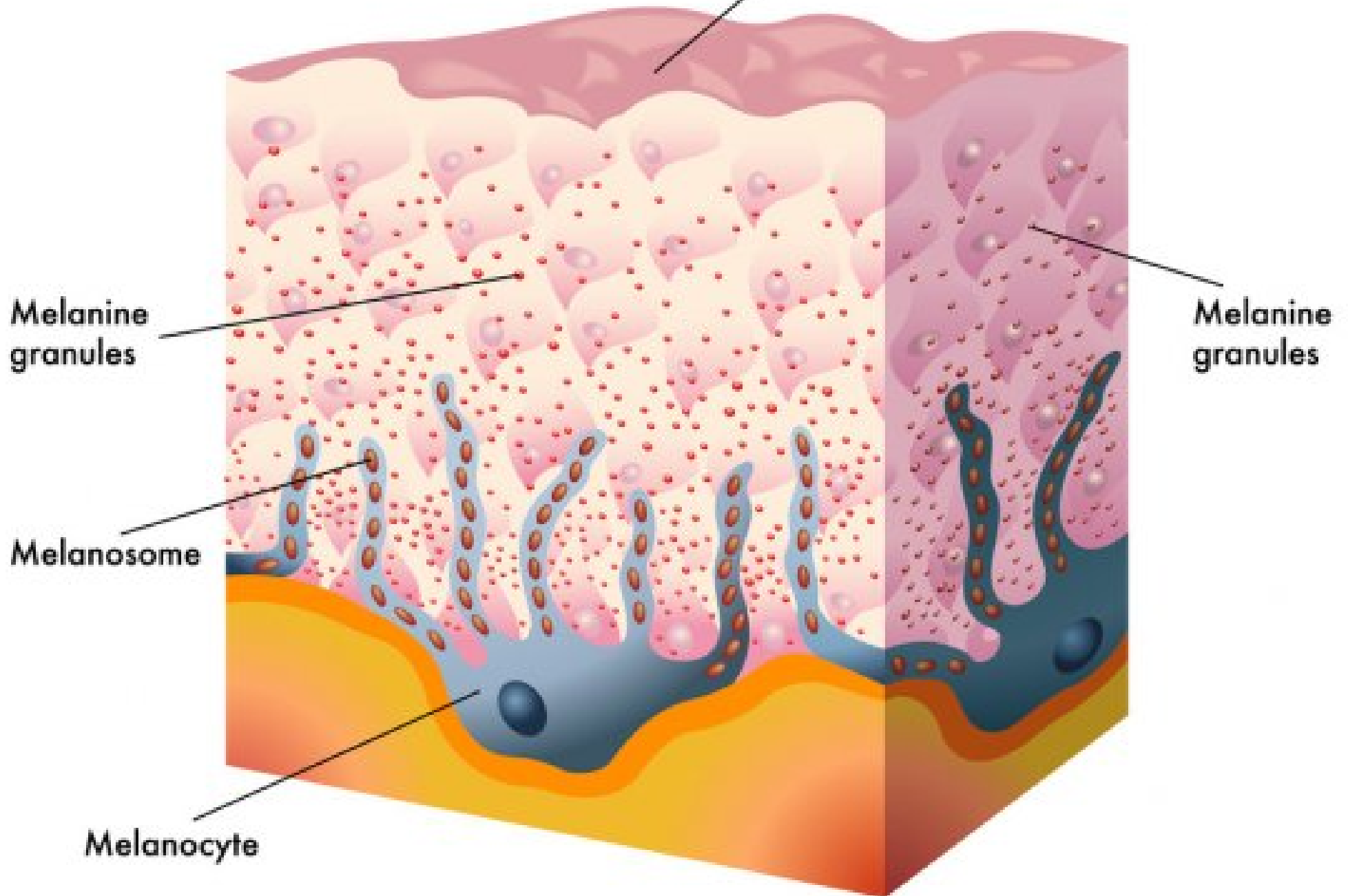
Surface

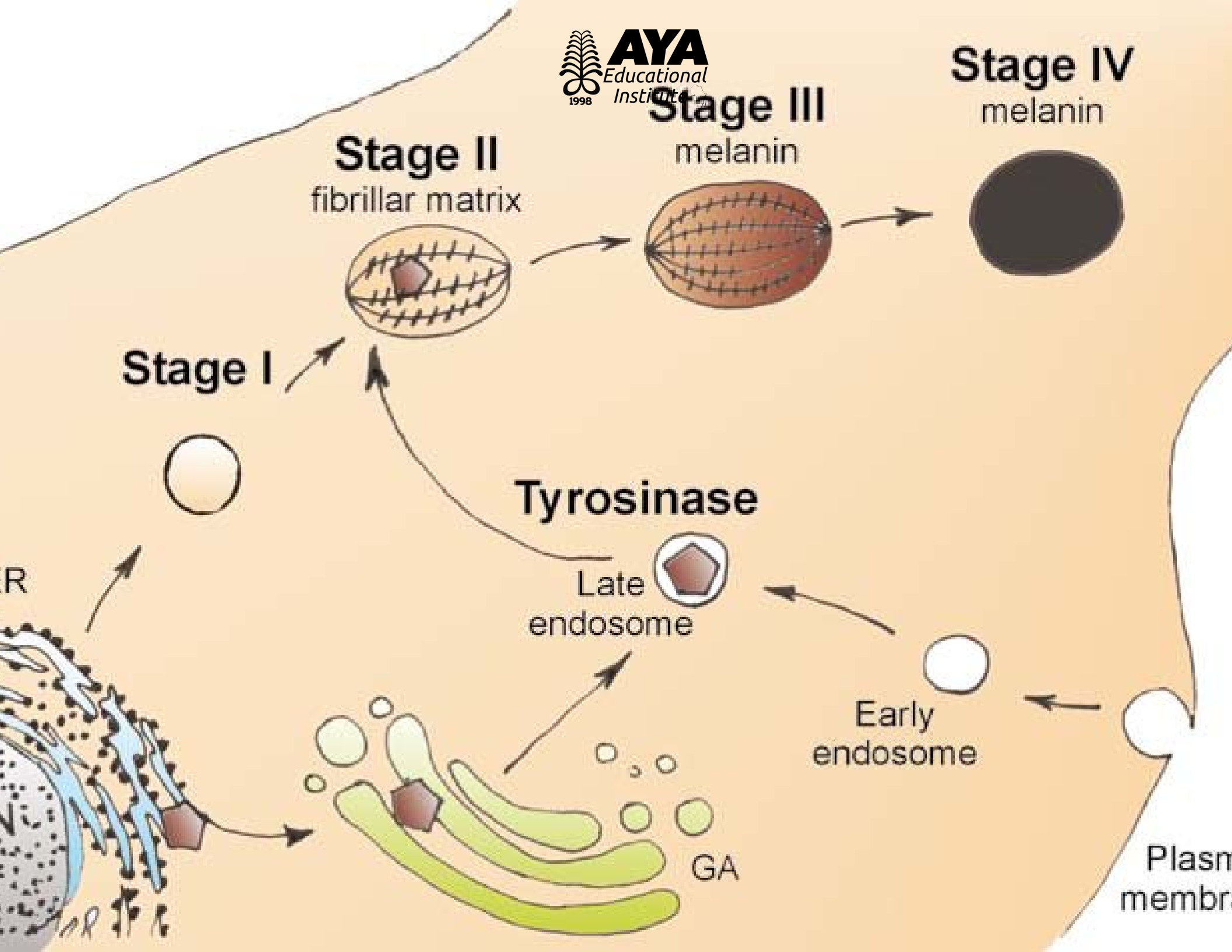
Upper
keratinocytes

Melanosomes

Basal
keratinocytes

Melanocytes





Stage IV
melanin

Stage III
melanin

Stage II
fibrillar matrix

Stage I

Tyrosinase

Late endosome

Early endosome

Plasma membrane

GA

R

Tyrosine



Tyrosinase

3-4 DOPA.



Tyrosinase

Dopaoquinone



Leucodopachrome



Melanochrome

Melanin polymer

Cysteine

Melanin polymer
(Red)



AYA
Educational
Institute
1998



1998

A close-up, high-contrast photograph of a person's face with dark skin. The focus is on the eyes and nose. The skin has a rich, textured appearance with some wrinkles around the eyes. The lighting is dramatic, highlighting the contours of the face.

Eumelanin



Pheomelanin
Red, Yellow



The MC1R Gene

“

Genetics also play a leading role in who is more likely to develop freckles based on which type of melanin their body produces.

The body can produce two types of melanin called pheomelanin and eumelanin. Eumelanin protects the skin from UV rays, but pheomelanin does not.

The type of melanin the body produces depends on a gene called MC1R.

- People with dark hair, eyes, and skin usually produce mostly eumelanin and are less likely to develop freckles.
- People with red, blonde, or light brown hair and who have light-colored skin and eyes usually produce mainly pheomelanin and are more likely to develop freckles.







Your Skin Sees

In lab experiments with human melanin-producing skin cells called melanocytes, researchers discovered that the cells contain **rhodopsin**, a photosensitive receptor used by the eye to detect light and traced the steps of how it unleashes calcium ion signals that instigate **melanin** production.



Your Skin Sees (Rhodopsin?)

What's the largest organ in the body?

In an organ, different tissues work together to carry out a particular function.

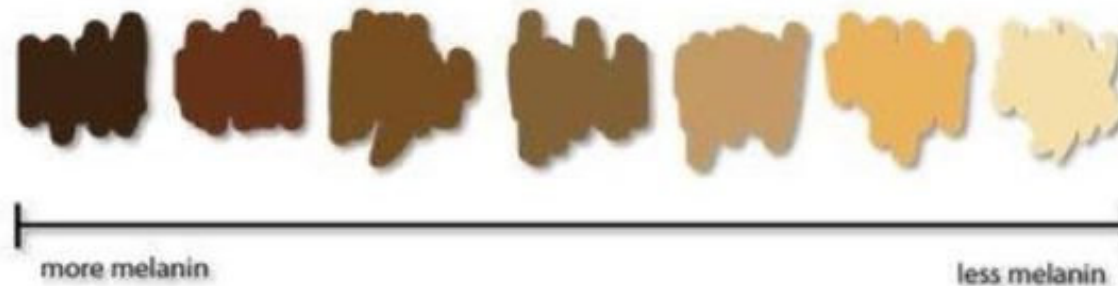
These are the main organs, as well as their primary function:

- The **brain** controls thoughts, memory and other organs.
- The **heart** pumps blood around the body.
- The **lungs** separate oxygen from the air and remove carbon dioxide from the blood.
- The **stomach** helps to digest food.
- The **intestines** absorb nutrients from food.
- The **liver** removes poisons from the blood.
- The **kidneys** filter blood and produce urine.
- The **bladder** stores urine.
- The **skin** protects and contains the other organs.



There are two types of melanin:

- **eumelanin** – black-brown form
- **pheomelanin** – red-yellow form



The more eumelanin in your epidermis, the darker your skin.

Light skin contains little eumelanin.

Fair skin, freckling, and carrot-red hair is associated with large amounts of pheomelanin and small amounts of eumelanin.

Pheomelanin & Cancer

Less Protection Against Skin DNA Damage

Melanin protects the skin against DNA damage induced by direct **absorption of sunlight's UV radiation**. Yet, irradiating melanin in vitro or in cultured cells also generates active oxygen species such as superoxide, which can indirectly induce oxidative base lesions and DNA strand breaks. This photosensitization is greater for pheomelanin (yellow and red melanin) than for eumelanin (brown and black).



... Because the concentration of eumelanin in black mice was three times that of pheomelanin in yellow mice, pheomelanin had 3-fold greater specific activity. We conclude that UV-irradiated melanin, particularly pheomelanin, photosensitizes adjacent cells to caspase-3 independent apoptosis, and this occurs at a frequency greater than the apoptosis induced by direct DNA absorption of UV. Melanin-induced apoptosis may contribute to the increased sensitivity of individuals with blonde and red hair to sunburn and skin cancer.

<https://www.pnas.org/content/101/42/15076.abstract>

Vocabulary

Molecule | Atom | Compound | Ions

What is an Atom and How do We Know?

How Small?

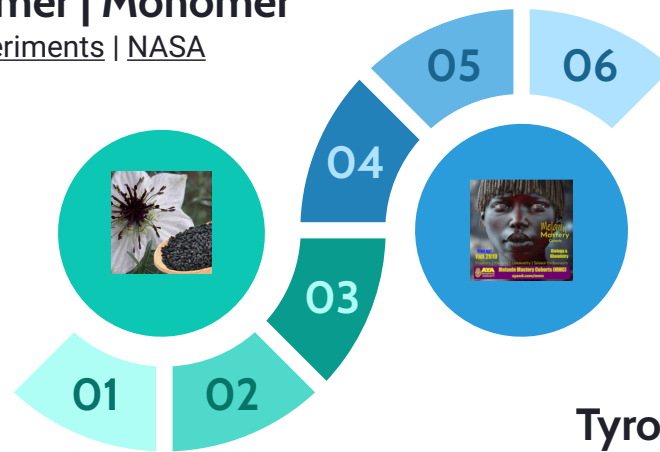
C18|H10|N2|O4
Carbon 18, Hydrogen 10,
Nitrogen 2, Oxygen 4

Pigment | Polymer | Monomer

Polymer | Experiments | NASA

Melanocyte | Melanosome | Melanin

Eu-melanin, Pheomelanin,
Neuromelanin, Allomelanin,
Selenomelanin



Single, Double, Covalent Bonds

A **covalent bond**, also called a **molecular bond**, is a chemical bond that involves the sharing of electron pairs between atoms.

Tyrosine - Tyrosinase >> Reaction

Amino Acids
Enzymes

When Melanin Malfunctions?

What is Ocular Albinism?

Ocular albinism is an inherited condition that affects a person's eyes. People with ocular albinism lack melanin, which gives eyes their blue, green, brown, or hazel color. Melanin also acts like sunscreen to protect the eyes from the sun's harmful UV rays. It can cause vision problems, such as nearsightedness, farsightedness, and astigmatism.

Ocular albinism affects the retina, which is the light-sensitive tissue lining the inside of the eye, and the optic nerve that sends signals about what the person sees to the brain. The condition prevents the retina from developing properly, which causes things to look blurry.



Pigment gives the iris of the eye its blue, brown, green or gray color, but it also helps the eye function better. The iris's job is to limit the amount of light entering the eye, for example, and the pigment makes the iris opaque so that less light gets through.

Pigment is also present in other tissues of the eye, including the retina, which is the light-sensitive tissue lining the back of the eye.

Unlike other types of albinism, ocular albinism does not noticeably affect a person's complexion or hair. They may have slightly lighter skin than do other members of their family, but the differences in complexion are usually minor.



Waarenburg syndrome
Suri from Ethiopia was born deaf





THE EYE COLOR
SPECTRUM:
REDUCING

Studies Shed Light On Role Of Melanin In Preventing Macular Degeneration

sciencedaily.com/releases/2005/07/050729062519.htm

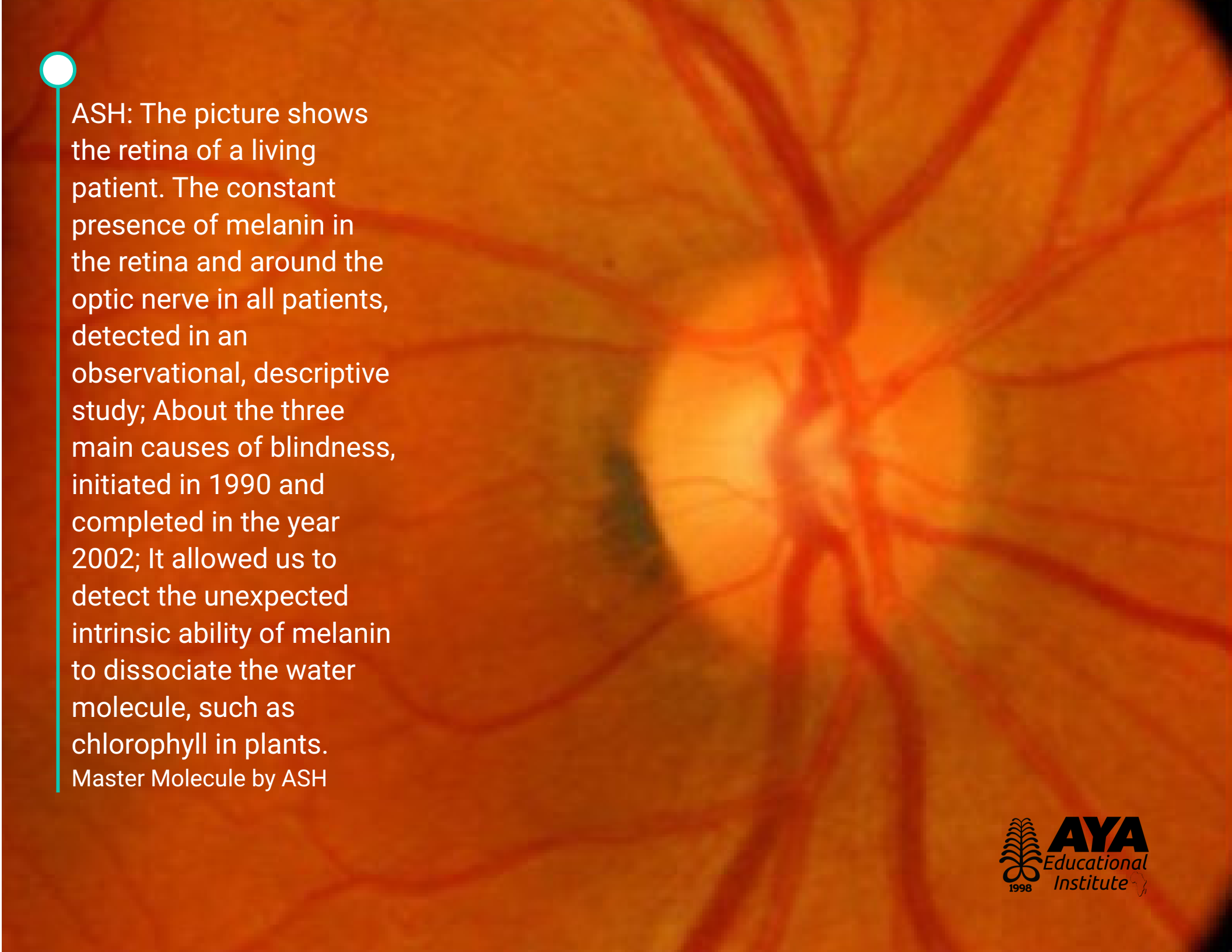
Two studies from an unusual research partnership at the University of Chicago appear to have resolved a long-standing dispute about the role of melanin in the eye. The studies, one published in the proceedings of the National Academy of Sciences (PNAS) and one early online in the Journal of the American Chemical Society (JACS), also suggest a new way to prevent a common cause of blindness.

Chemist James Norris, Ph.D., and retina surgeon Kourous Rezai, M.D., combined resources to show that **melanin**, a pigment found throughout the human body, acts like a neutralizing sponge **inside cells in the retina** to **soak up and destroy reactive oxygen species.**

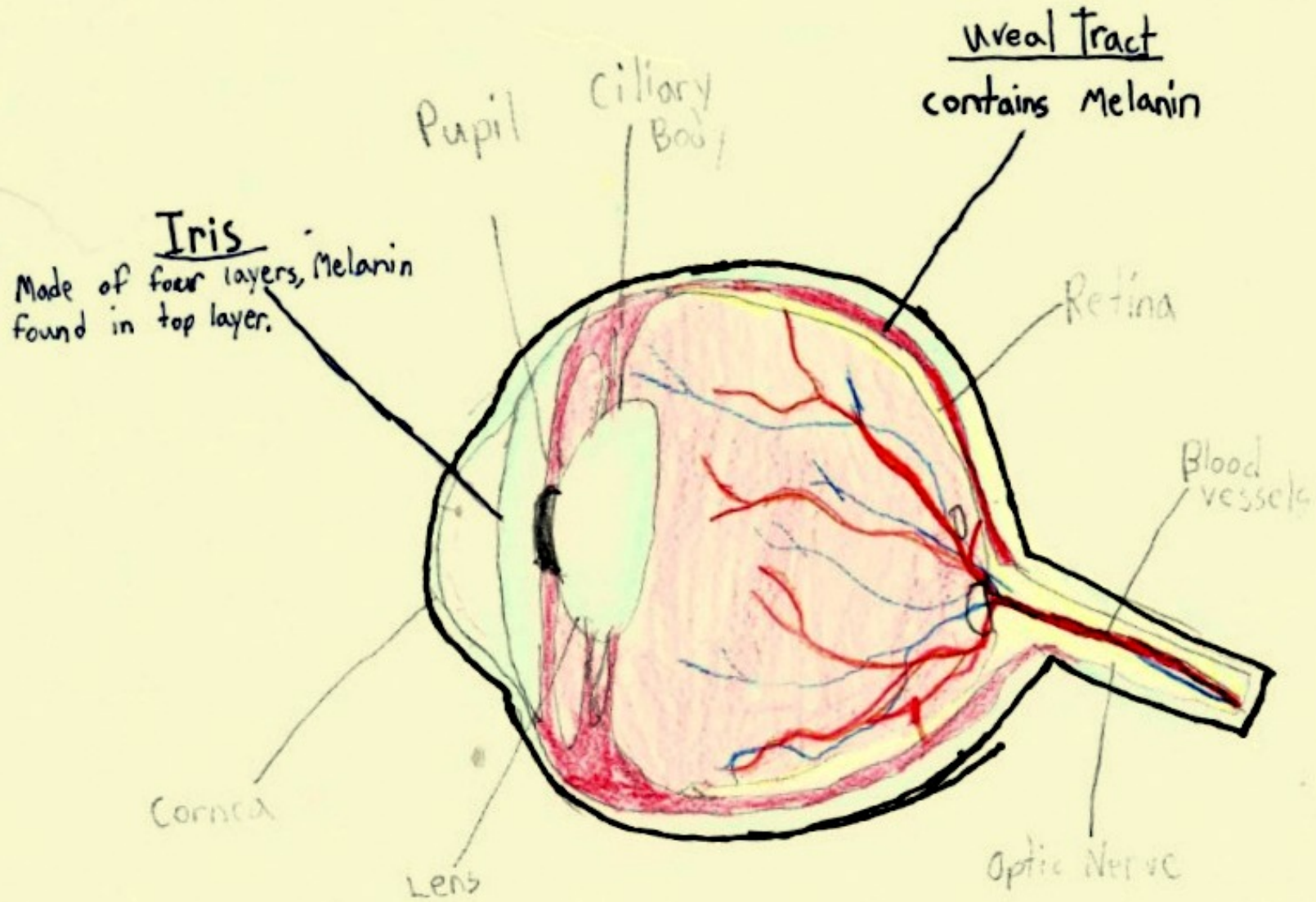
Reactive oxygen species, or free radicals, energized by light, are thought to play a major role in macular degeneration, the leading cause of blindness in people over the age of 60.

We now have the first persuasive evidence that melanin plays an important protective role within the eye," said Norris, professor in the Department of Chemistry and the Institute for Biophysical Dynamics at the University of Chicago and one of the senior authors of both papers.

"Although melanin contains its own intrinsic free radical, we found that **it absorbs a far more damaging form of free radical**, converting its destructive energy into harmless heat before it can hurt the retina."



ASH: The picture shows the retina of a living patient. The constant presence of melanin in the retina and around the optic nerve in all patients, detected in an observational, descriptive study; About the three main causes of blindness, initiated in 1990 and completed in the year 2002; It allowed us to detect the unexpected intrinsic ability of melanin to dissociate the water molecule, such as chlorophyll in plants.
Master Molecule by ASH



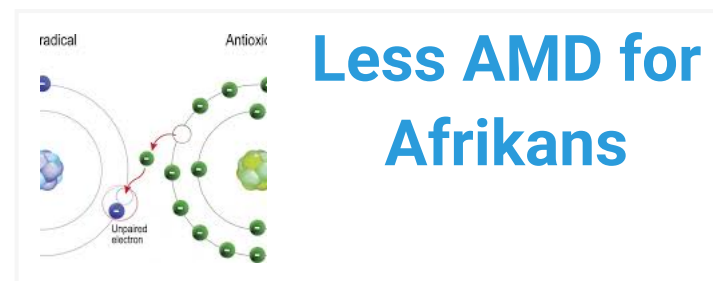
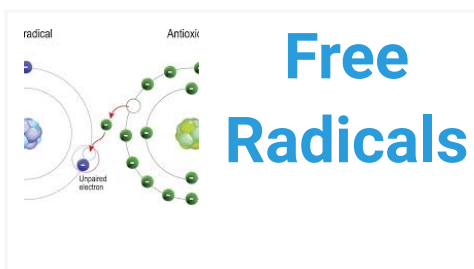
Studies Shed Light On Role Of Melanin In Preventing Macular Degeneration

sciencedaily.com/releases/2005/07/050729062519.htm

FULL STORY

Two studies from an unusual research partnership at the University of Chicago appear to have resolved a long-standing dispute about the role of melanin in the eye. The studies, one published in the Proceedings of the National Academy of Sciences (PNAS) and one early online in the Journal of the American Chemical Society (JACS), also suggest a new way to prevent a common cause of blindness.

Chemist James Norris, Ph.D., and retina surgeon Kourous Rezai, M.D., combined resources to show that melanin, a pigment found throughout the human body, acts like a neutralizing sponge inside cells in the retina to soak up and destroy reactive oxygen species. Reactive oxygen species, or free radicals, energized by light, are thought to play a major role in macular degeneration, the leading cause of blindness in people over the age of 60.

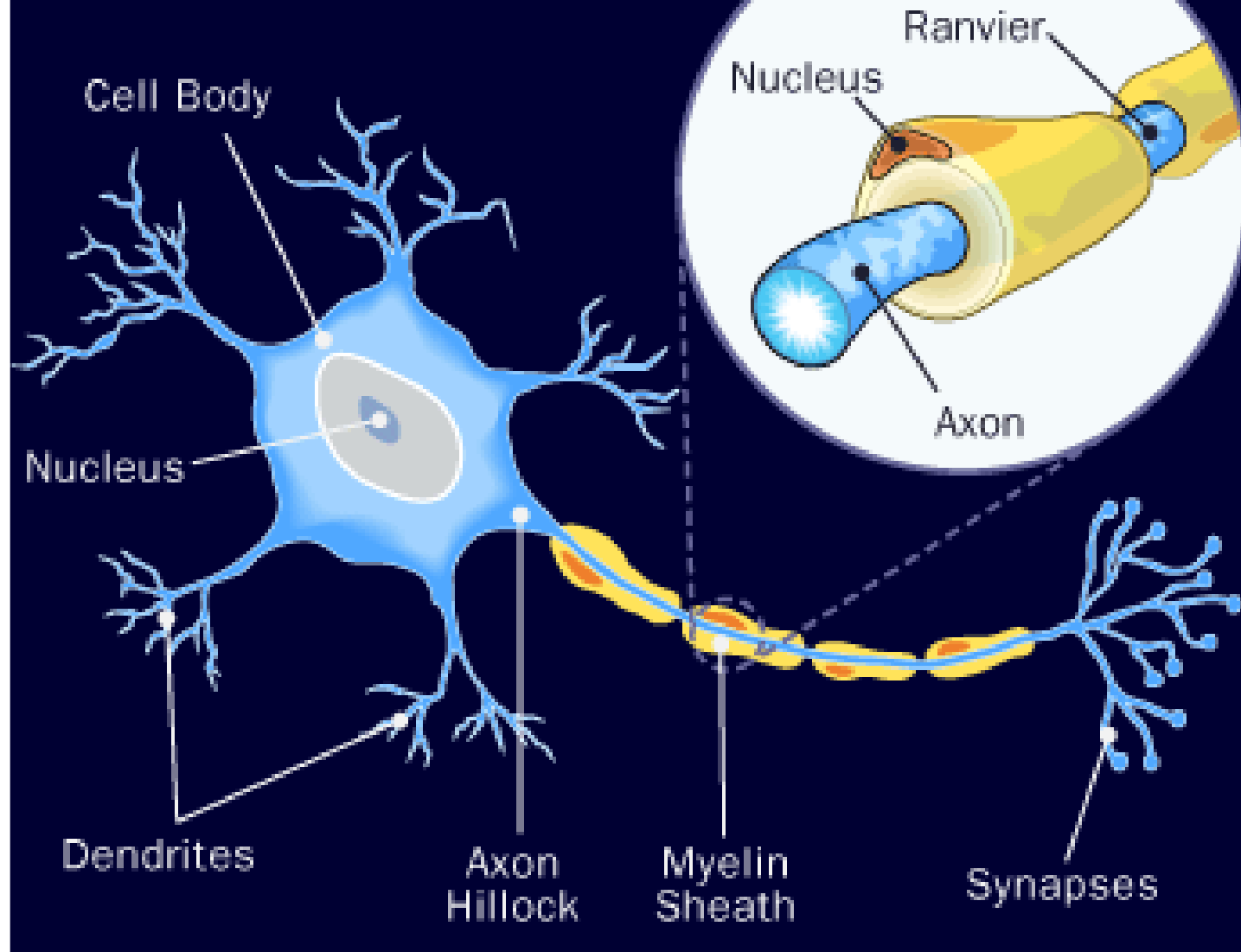




Neuromelanin

Basic Neuron Design

©2011 HowStuffWorks



Organ systems

Organs are organized into organ systems.

An organ system is a group of organs that work together to do a job.

Key human organ systems:

- The **circulatory system** includes the heart, veins and arteries. Its function is to transport substances in the blood, around the body.
- The **respiratory system** includes the nose and the lungs. It takes in oxygen and removes carbon dioxide.
- The **digestive system** includes the stomach and intestines. It breaks down food and absorbs nutrients.
- The **reproductive system** includes the uterus and vagina in women, and the penis and testes in men. Its function is to create offspring.
- The **musculoskeletal system** includes bones and muscles. It supports the body and allows movement.
- The **immune system** includes bone marrow. It protects the body from infection.



Neuromelanin: Past, Present, Future

M. Miranda

Department of Cell Biology and Physiology.

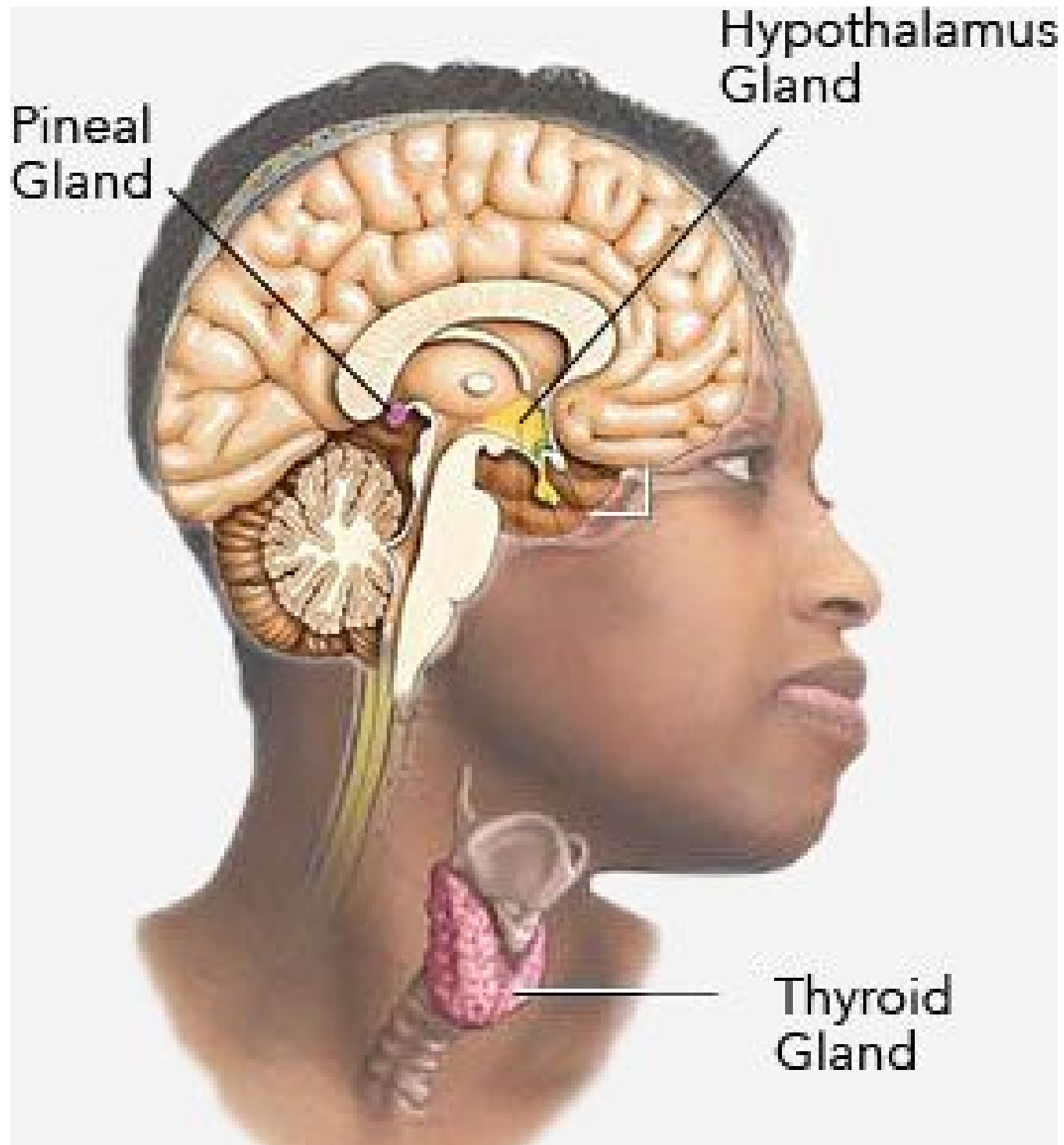
University of L'Aquila, I - 67010 Coppito, L'Aquila, Italy

The "International Colloquium on Neuromelanin and Parkinson's Disease", held in Sorrento (Naples, Italy) on the 6th - 8th May of this year, (Chaired by Prof. G. Prota) gave me the occasion to make the state of art about neuromelanin structure, function and involvement in neurodegenerative syndromes such as Parkinson's disease. As we will discuss later in this review we expect much from future work concerning neuromelanin function and structure, in fact past and present work reports have not yet provided conclusive results about those topics.

Some more progress has been achieved as concerns the involvement of neuromelanin in drug, for instance MPTP (1-methyl-4-phenyl-1,2,3,6-tetrahydropyridine) or metal caused parkinsonism in primates and man (1-6).

PAST:

Since the first description of a dark brown pigment occurrence within the brain stem of humans by d'Azur (7), much time has flown before an experimental approach to investigate the biochemical nature of the brain pigment was performed. Especially the pigment found in the substantia nigra and in the locus coeruleus





Pineal Gland

There actually is a relationship between melanin and **melatonin**; the pineal gland. Melatonin is a hormone found in animals and humans. It is secreted in the pineal gland of the brain and other peripheral organs including the retina and gastrointestinal tract. The pineal gland is a pea-sized endocrine organ shaped like a pine cone in the middle of the brain. It regulates the circadian rhythms by varying the production of melatonin at different times of day. Circadian rhythms are biological processes that occur within a 24 hour time frame or timed to the earth's daily rotation through the phases of day to night and back again.

The rate at which melatonin production occurs is controlled by a bundle of 20,000 nerves in the hypothalamus of the brain just above the optical nerves called the **suprachiasmatic nucleus**, or SCN. Melatonin is secreted by cells in the pineal gland known as pinealocytes. Melatonin secretion is inhibited by light entering the retina and stimulated by darkness.

Pituitary stimulates: MSH - **Melanin Stimulating Hormone. These tell the melanocytes to increase production of melanin.**



Pineal Gland Melatonin | Serotonin





10 Other Functions of Melatonin

Epiphysis cerebri

In addition to regulation of the (Sleep-wake cycle and other time-dependent, seasonal rhythms)

1. Memory formation
2. Long-term potentiation
3. Synaptic plasticity (among other functions) within the hippocampus
4. Consciousness
5. Stress
6. Menopause
7. Aging
8. Immune system
9. Protection of the upper portion of the gastrointestinal tract
10. Possibly antioxidant, antidepressive, anxiolytic and nootropic effect
11. Influence on the insulin secretion

Pituitary stimulates: MSH - **Melanin Stimulating Hormone. These tell the melanocytes to increase production of melanin.**

Deborah Maat: Melanin & Melatonin



MELANIN (PINEAL) NUTRITION

Melanin is the foundation for immunity. It is a free radical scavenger; aids digestion, antioxidant, bones, nerves, cellular and hormone functions. The following are essential for melanin production.

MELANIN HORMONES: NERVOUS SYSTEM STIMULATED:	Serotonin/ Sympathetic Stress	Melatonin Parasympathetic Stress
	SUPPLEMENTS	
	Vitamin A	d-Alpha
	B-6	Tocopherol
	B-12	B-1
	Calcium	B-2
	Chromium	Magnesium
	Cobalamin	Vanadium
	Copper	Coenzyme Q-10
	Vitamin C	Vitamin E
	Niacin	Vitamin D, Iodine

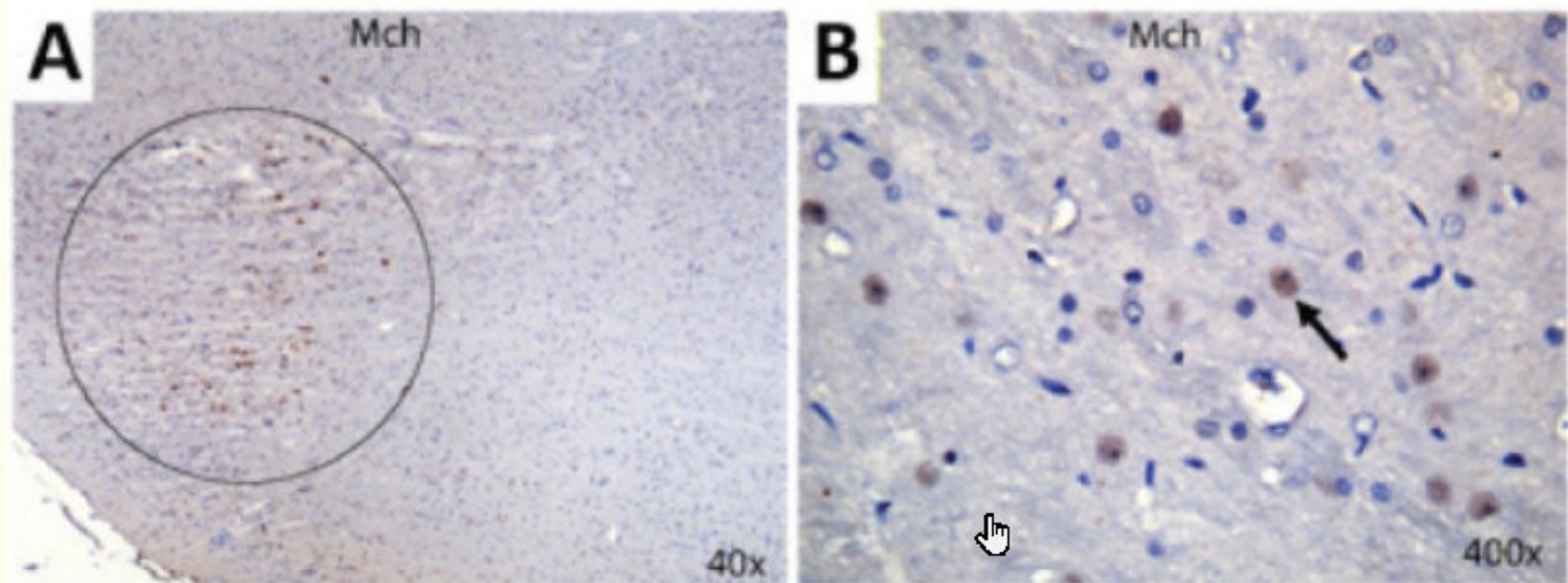


Figure 3

Melanin-concentrating hormone immunopositive (brown) cells on formalin fixed paraffin embedded rat brain slides, haematoxylin counterstain. At low magnification (Panel A – 40x) there are strong immunoreactions in the hypothalamic area (circle). At higher magnification (Panel B – 400x) the reaction is limited to the cytoplasm (arrow).

The Melanin-Concentrating Hormone

System in Human, Rodent and Avian Brain

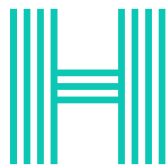
Melanin-concentrating hormone (MCH) is a cyclic 19 amino acid orexigenic hypothalamic peptide.

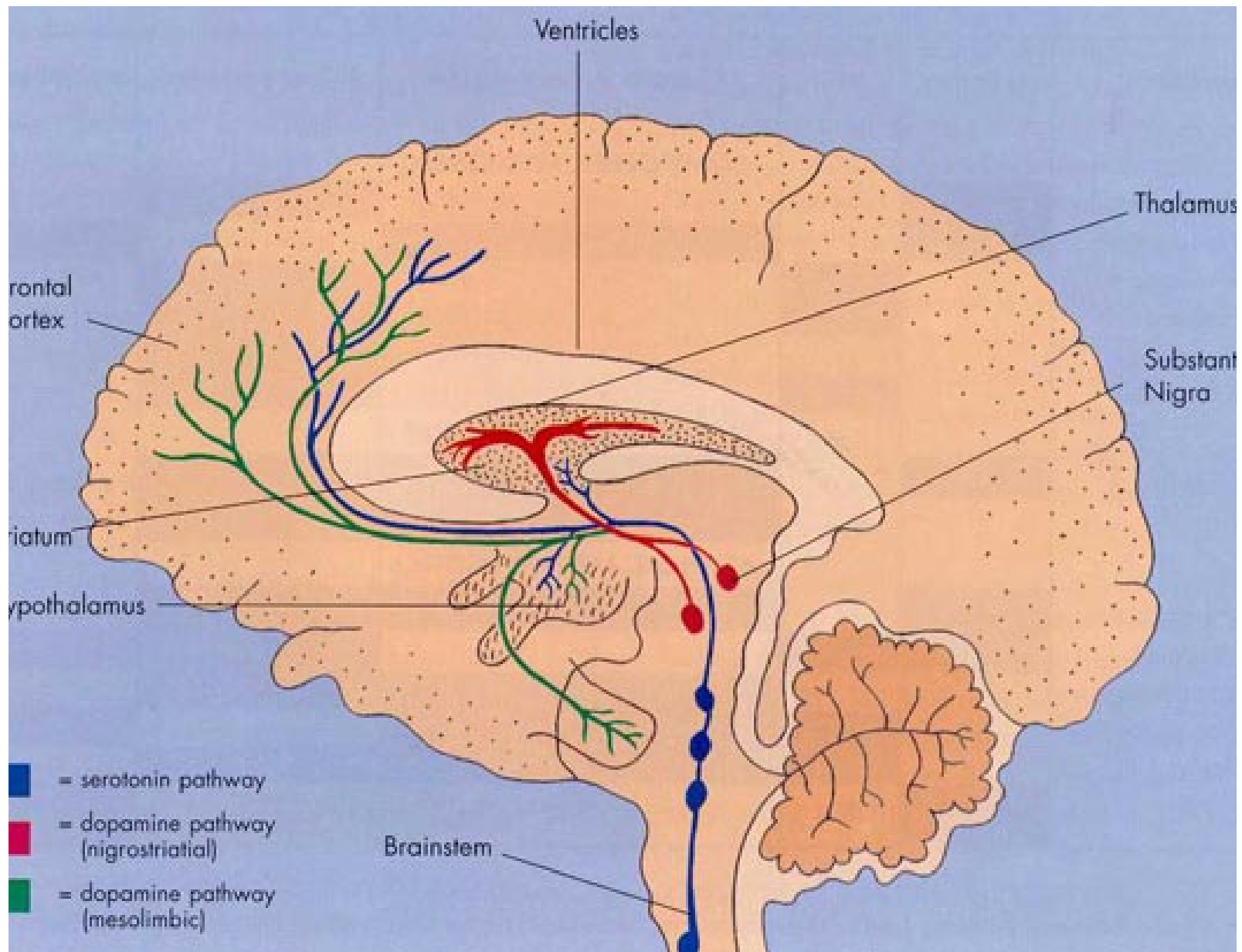
A stylized letter 'M' icon composed of multiple parallel vertical lines of varying heights, creating a sense of depth and movement.

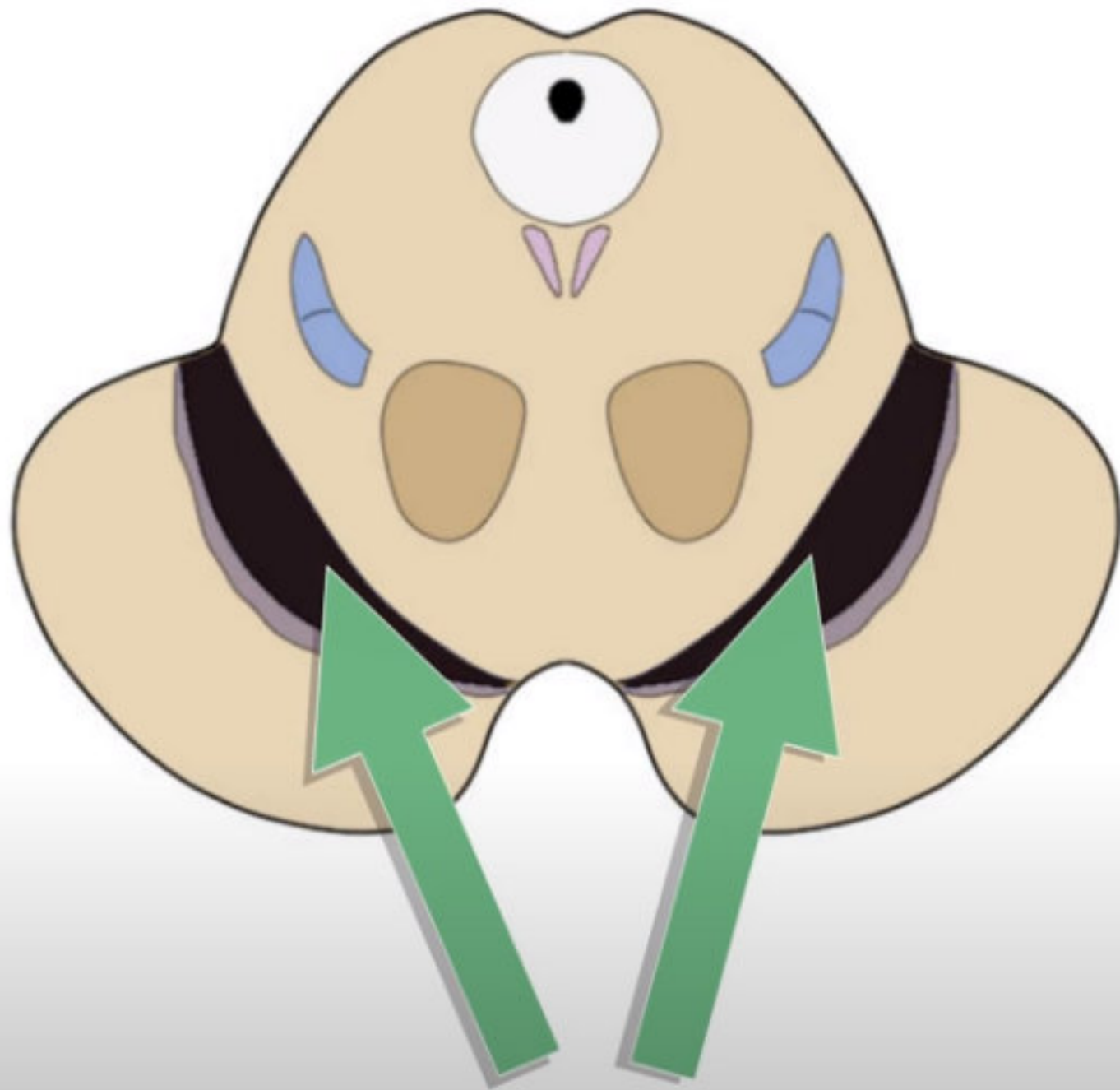
MCH is located in the lateral and dorsal **hypothalamus**, as well as in the zona incerta.

A stylized letter 'C' icon composed of multiple concentric, slightly irregular circular lines, giving it a hand-drawn or organic feel.

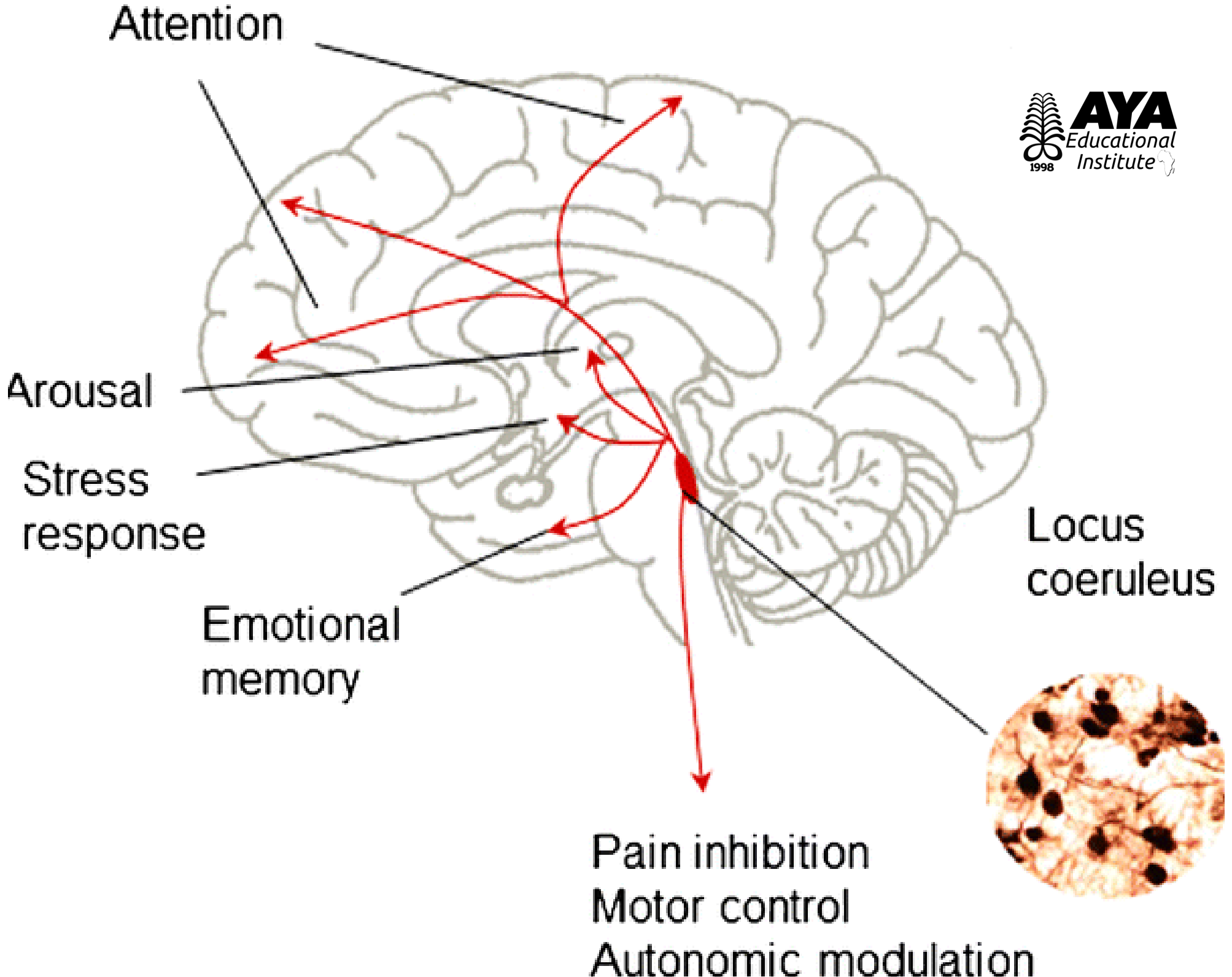
In mammals MCH increases food intake, contributes to regulation of energy balance, temperature, reproductive function, endocrine homeostasis and biological rhythms. Several studies have proved the significance of MCH in obesity, diabetes and depression.

A stylized letter 'H' icon composed of multiple parallel vertical lines of varying heights, similar to the 'M' icon, creating a sense of depth and movement.





SUBSTANTIA NIGRA



Attention

Arousal

Stress
response

Emotional
memory

Locus
coeruleus

Pain inhibition
Motor control
Autonomic modulation

Locus Coeruleus



The locus coeruleus (LC) contains norepinephrine (NE)-synthesizing neurons that send diffuse projections throughout the central nervous system. The LC-NE system has a major role in arousal, attention and stress responses. In the brain, NE may also contribute to long-term synaptic plasticity, pain modulation, motor control, energy homeostasis and control of local blood flow.

The LC is severely affected in neurodegenerative disorders including Parkinson disease (PD). Involvement of the noradrenergic neurons of the LC precedes that of dopaminergic neurons of the substantia nigra pars compacta and has been increasingly recognized as a potential major contributor to cognitive manifestations in early PD, particularly impaired attention. Abnormal noradrenergic signaling may also potentially contribute to motor manifestations of the disease. This makes the LC-NE system a major contributor to the pathobiology and potential target for therapy of PD.

Thermal Melanism



The finding that color lightness is relevant for the thermoregulation of fungi is not only important for understanding the processes that shape the distribution of microorganisms but also suggestive that thermal melanism might have been of major significance for the evolution of eukaryotic life. In other words, melanin-based conversion of harmful solar radiation into useful biological energy might represent another crucial and general mechanism in addition to photosynthesis that enabled the earliest land-living organisms to survive and grow.





ELSEVIER

Journal of Investigative Dermatology

Volume 132, Issue 3, Part 2, March 2012, Pages 835-845



Review

Melanocytes: A Window into the Nervous System

Mina Yaar¹, Hee-Young Park¹  

Show more 

<https://doi.org/10.1038/jid.2011.386>

Get rights and content

Dark arts

A bodily pigment may have industrial uses

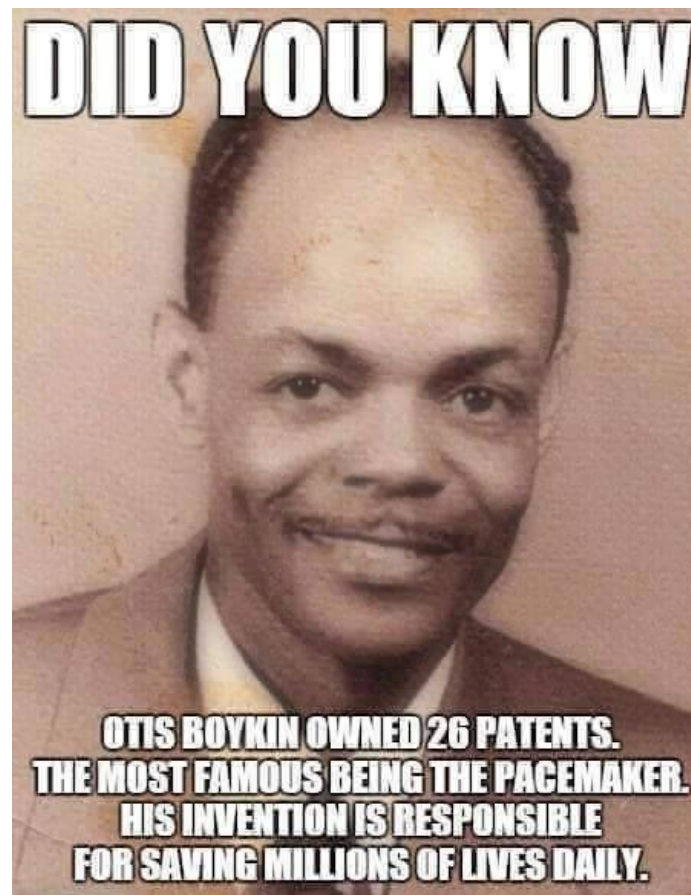


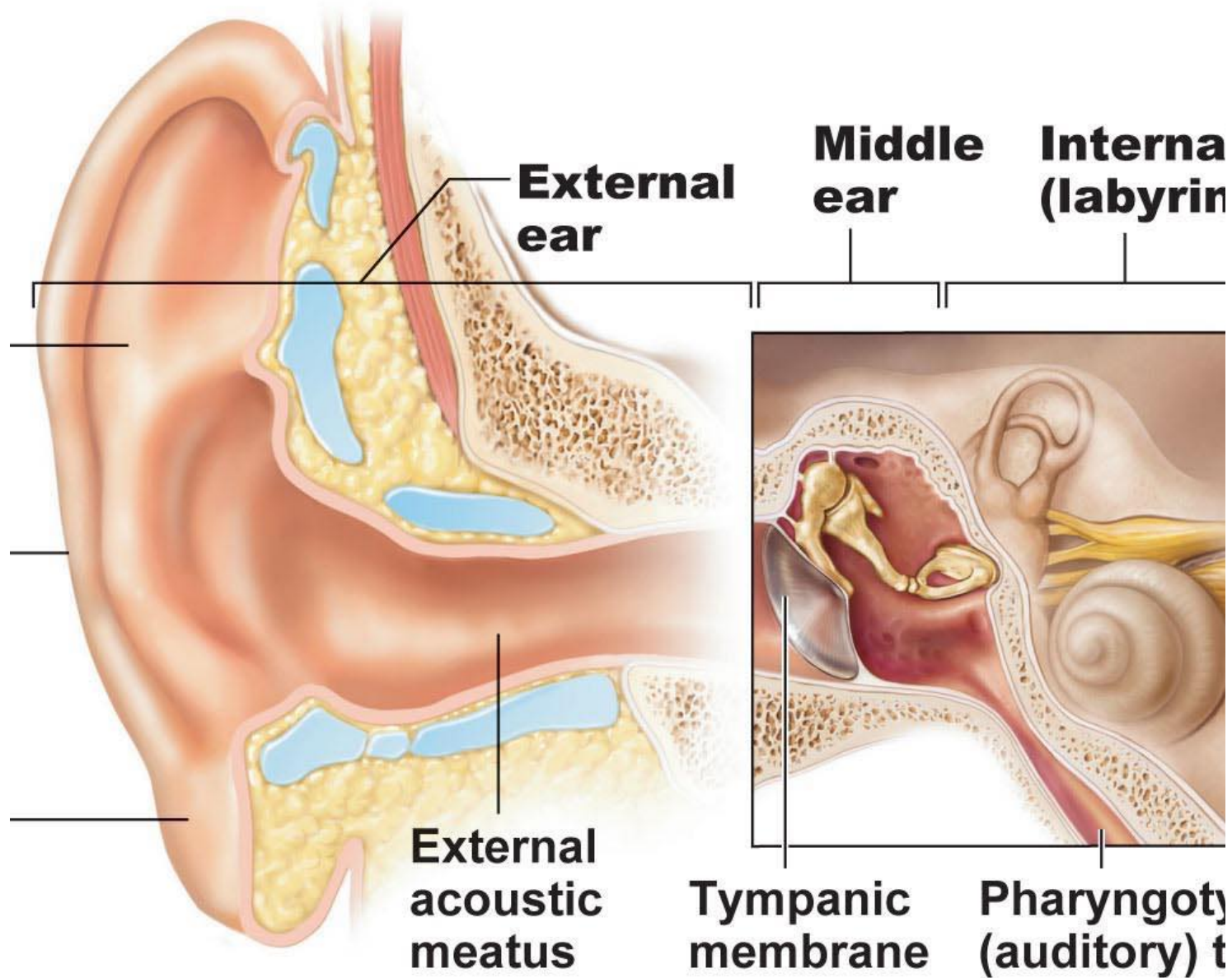
Print edition | Science and technology

Aug 27th 2016

Electro-Khemistry: (Spontaneous vs. Electrolysis)

Electrochemistry is the relationship between electricity and chemical reactions. There are two ways that electricity and chemical reactions interact: certain chemical reactions can create electricity, and electricity can force certain chemical reactions to happen that wouldn't happen otherwise. We'll look at two very common examples in electrochemistry. We'll see how a galvanic or voltaic cell uses a chemical reaction to create electricity, and we'll see how electrolysis uses electricity to cause water to decompose into hydrogen and oxygen gas. We'll also look at the list of Standard Reduction Potentials, to figure out what chemical reactions will happen on their own (are spontaneous) are can create electricity, and which will not happen on their own (are not spontaneous) and require electricity to happen.





three regions of the ear

Copyright © 2010 Pearson Education, Inc.

Copyright © 2010 Pearson Education, Inc.

Inner Ear Melanocytes

Inner Ear Melanocytes

Mouse stria vascularis

Melanocytes have been identified within the inner ear within the modiolus, vestibular and stria vascularis (intermediate cells).[8] ((see review [9])

The stria vascularis, in addition to blood vessels, consists of 3 main cell types:

1. Marginal cells - epithelial origin - line the lumen of the cochlear duct
2. Basal cells - mesoderm origin - form a continuous layer
3. Intermediate cells - neural crest origin - scattered between the marginal (interdigitated with the marginal cells) and basal cell layers - melanocyte-like cells derived from neural crest

In addition to their role in stria vascularis development, these melanocytes have several suggested adult roles:[9]

- biological reservoir for divalent ions and as an ion exchanger
- intracellular buffering system for calcium.
- binding ototoxic drugs



Melanin accompanies all life!

Lorem ipsum
dolor sit amet, consectetur
adipiscing elit, sed do eiusmod
tempor





Review > [Peptides](#). 2005 Oct;26(10):1687-9. doi: 10.1016/j.peptides.2005.01.023.

Discovery that a melanocortin regulates sexual functions in male and female humans

Mac E Hadley¹

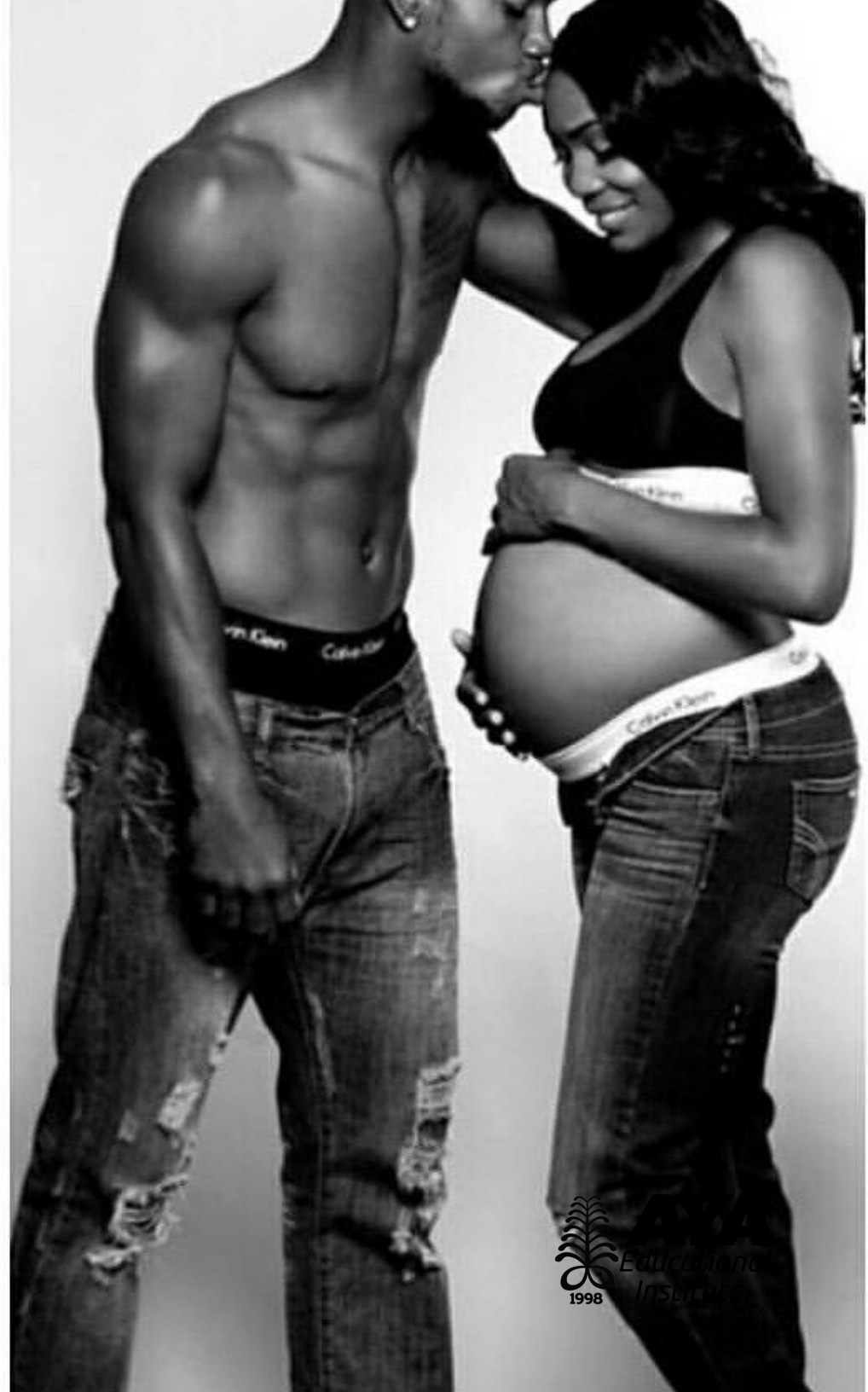
Affiliations + expand

PMID: 15996790 DOI: [10.1016/j.peptides.2005.01.023](#)



Abstract

Melanocortins (MCs) are multifunctional peptide hormones that regulate a diversity of physiological functions. MCs have been implicated in sexual function in animals. We document here that a MC analog, Melanotan II (MTII), can enhance sexual function in human males (erectile activity) and females (increased levels of sexual desire and genital arousal). Unlike other sexual-enhancement drugs, MTII works at the level of the brain, thus eliciting a rather natural sexual response with minimal or no undesirable side effects. The actions of the peptide were discovered accidentally while studying the effects of the peptide and related analogs on human skin pigmentation (tanning).



White women don't try to make their linena nigra.




My Face Hunter



AYA
Educational
Institute

How to Get Rid of the Linea Nigra



Women's Eggs Inherently Choosy When
It Comes To Which Sperm Fertilizes It,
Research Reveals



Melanin & Embryology

When the mother's egg is fertilized by the father's sperm, that ball rapidly multiplies. A black dot forms on the surface of the mother's fertilized egg. It forms a thing called the pigmented pole. It will split apart and form two different poles. It will further divide and in the first 4 days will pass down the mother's Fallopian tubes. The morula anchors itself to the mother's uterine wall

Morula

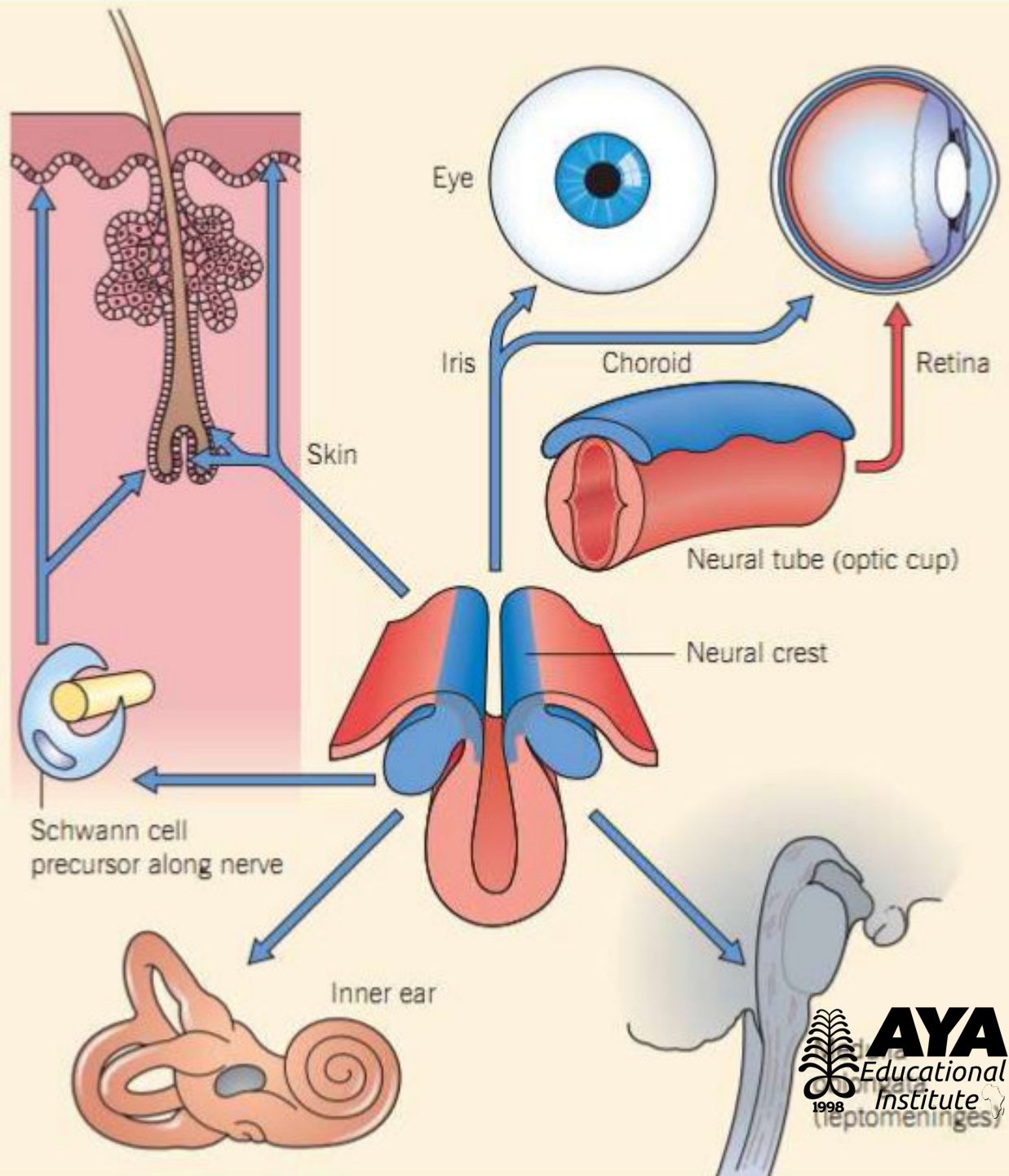
(Latin, morula = mulberry) An early stage in post-fertilization development when cells divide rapidly (embryonic cell cycle) producing a solid mass of cells (12-15 cells) with a "mulberry" appearance. The mulberry - Morula anchors to the wall of the mother's uterus - another black dot. It makes a trophoblast which makes two hormones:

1. Human Chorionic Gonadotrophin (?) (HCG - this is what a home pregnancy test picks up from the blood) and
2. Melanocyte Stimulating Hormone (MSH) that controls black pigment cells

So from day-one blackness is working. Directing traffic, building the actual scaffolding, of the human body. Creating a blue print of the human body. It's telling DNA what to do.

Melanin precedes DNA.

MIGRATION OF MELANOCYTES FROM THE NEURAL CREST



Melanocytes, like other neural-derived tissues, have a low mitotic rate

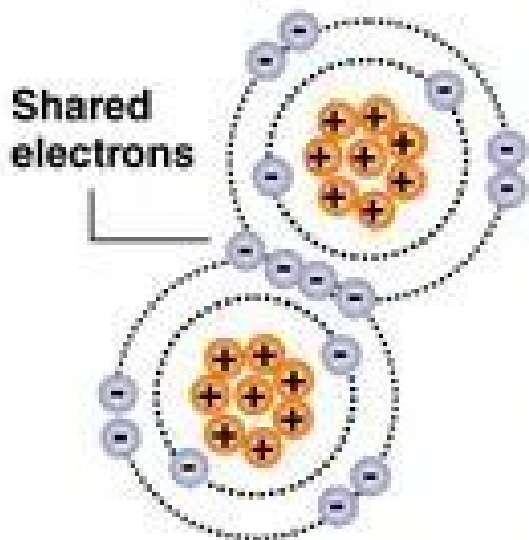
Free radicals and aging

Many experts say the aging process is due to free radicals, unstable oxygen molecules, that can damage DNA, decrease organ function.

- + Protons
- Electrons

Seeking stability

Atoms form molecules, share electrons to maintain equal pairs

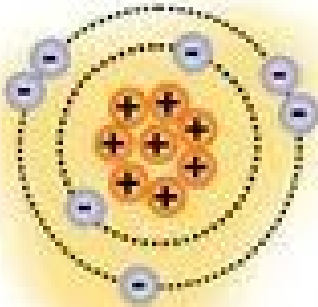


Stable atom

Equal pairs of protons, electrons

How free radical forms

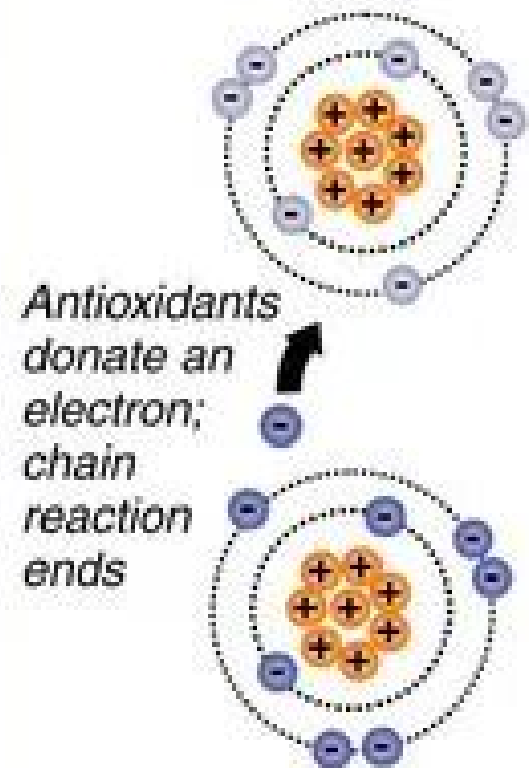
Molecule splits leaving an atom with unpaired electron



Unstable atom attacks other molecules to steal electron, sets off chain reaction of free radical formation that disrupts living cell

Stopping the damage

Antioxidants in body neutralize free radicals



© 2008 MCT

Source: McClatchy Washington Bureau, HealthCheck Systems

The 6 Kingdoms of Life



Fungi
(eukaryotic,
multicellular)



Animalia
(eukaryotic,
multicellular)



Plantae
(eukaryotic,
multicellular)



Protista
(eukaryotic,
uni- or multicellular)

Archaeobacteria
(prokaryotic,
unicellular)



Eubacteria
(prokaryotic,
unicellular)



Universal
ancestor







Ayam Cemani Chicken

















ebony RNAi

B1

B2

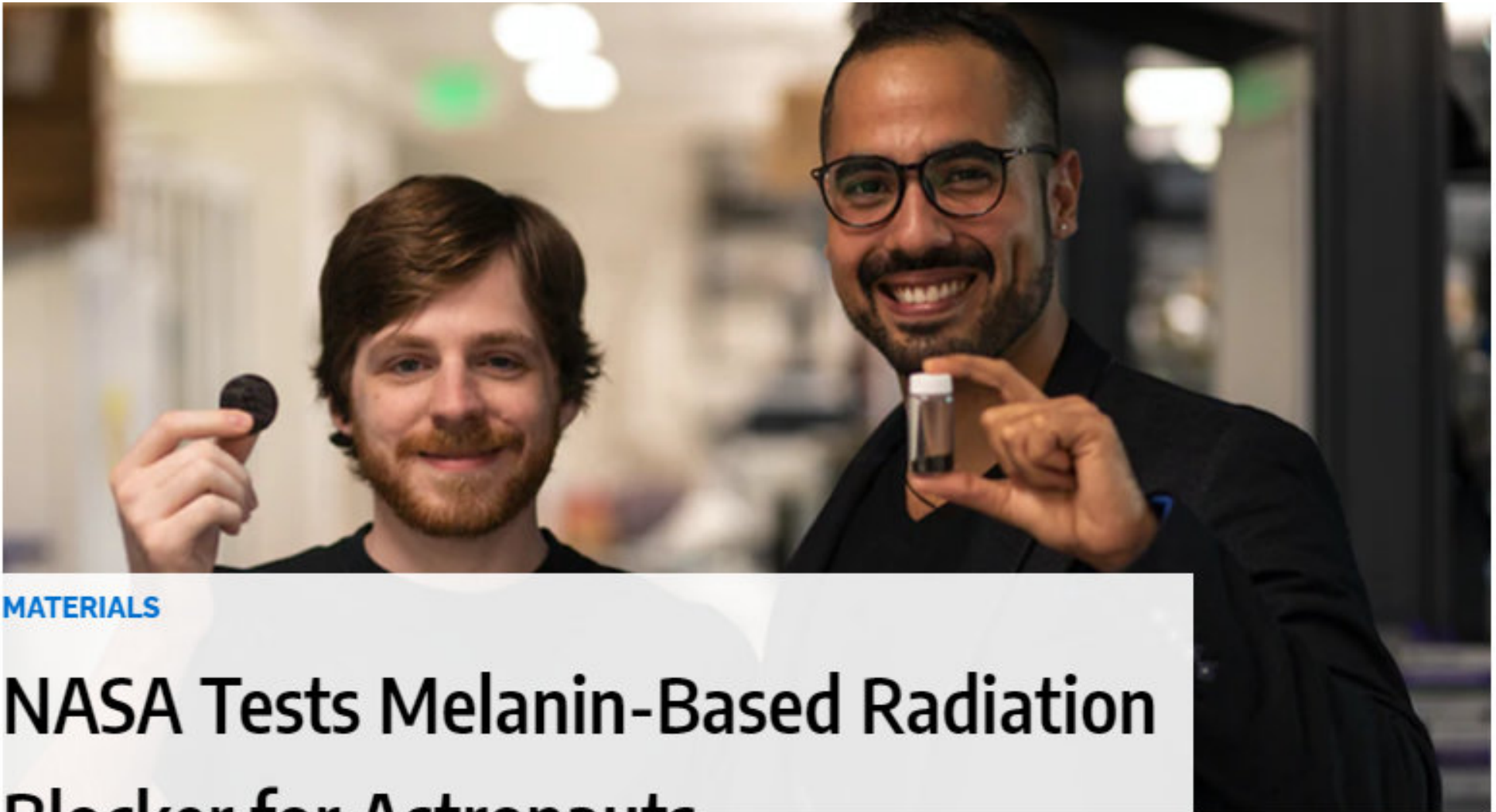
B3

B4

C1

C2

Ai



MATERIALS

NASA Tests Melanin-Based Radiation Blocker for Astronauts

A biological pigment mixed with manmade polymers could act as a sunscreen strong enough for space journeys.

[Stephen J. Mraz](#)

NOV 20 2018

[Melanin In Space](#)
[Radames J.B. Cordero, PhD,](#)



NASA: Melanin in Space!

A biological pigment mixed with manmade polymers could act as a sunscreen strong enough for space journeys.

NASA is sending biomaterial samples from Johns Hopkins University to the International Space Station, where their ability to protect against harmful radiation will be put to the test.

The samples consist of fungus-grown melanin and polymers biomaterials that Johns Hopkins researcher Radamés J.B. Cordero has spent the past four years developing and studying. On the space station, the material will be checked for its ability to protect against space radiation. Test results could lead to new ideas on how to protect humans from harmful radiation in outer space and on Earth.

Melanin, a dark brown or black pigment, absorbs harmful ionizing radiation that damages cells, and is found across all biological kingdoms. After isolating a powdered form of melanin from the fungus, scientists embedded it in plastic polymers. The resulting material will also be tested for its structural stability and its ability to withstand the environment of outer space.

“We know that space radiation is dangerous and that it damages matter,” says Cordero. “Radiation is hazardous to astronauts and equipment in space, but radiation exposure is also a concern of healthcare providers and patients during radiation imaging, radiation therapy, and similar procedures. If you have a material that shields against radiation, it could protect astronauts and structures in space but also benefit people here on Earth.”

Natural Defenses: Your Body Knows What To Do!





Melanin and Me?

4 Lines of immune system defense + needed nutrients

1) Tissue Macrophages

- 1) Rest
- 2) Warm liquids
- 3) Vit-D 10000 IU/day
- 4) Zinc: 50-100 mg/d

2) Neutrophil Invasion

5) Avoid Sugars.

3) Monocyte Invasion

6) Vit-C: >3000 mg/day

4) Increased production of W.B.Cs

7) Flavonoids >200 mg/day

8) Vit-A: 10000-20000 IU/d

9) Vit-E: 800 IU/d

10) Vit-B6: 100 mg/d

5-Pillar NGOLO Approach

1. WE ARE THE CAVALRY

WE MUST DEFEAT THE VIRUS BY BUILDING OUR PHYSICAL / SOCIAL / CULTURAL IMMUNE SYSTEMS
"WE ARE ENOUGH" MIND-SET | DIET | EXERCISE | WATER | GET SUN – D3 | REST | NGOLO GARDENS

2. FEED OUR BLACKNESS – MELANIN + CULTURE

ACTIVATE OUR BODY MELANIN + SUPPLEMENT WITH ALLOMELANINS + BLACK CULTURAL MISSION

3. EDUCATE OURSELVES – SCIENCE OF VIRUS & OUR BODIES

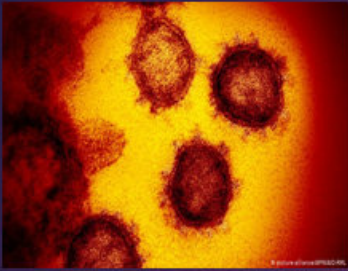
HOW DOES THE VIRUS WORK? | BLACK VULNERABILITY & DEATH CARE | WHO TO BELIEVE
HOW OUR IMMUNE SYSTEM WORKS | HOW IT CAN WIN | OUR RESEARCH

4. AECC – AUTHENTIC EMOTIONAL AND CULTURAL CONNECTIONS

COUNTERING THE ILLS OF SOCIAL DISTANCING AND MASS MANIPULATION | EMOTIONAL
CONNECTIONS | FAMILY STORY-TELLING | HEALING WORDS THAT TOUCH

5. EXPLORE / SHARE RESOURCES





We must defeat the virus by building our physical/social immune system

1. Develop a “We are enough mind-set”
 - Healing Injected Oppression
 - Blocking Mass Manipulation
 - Emotionally Authentic for Clear Thinking
2. Diet
 - Move to plant-based (lots of leafy greens) diet or get close
 - 8 glasses of water per day
 - No sugar (or close)
 - No dairy (or close)
 - Eat to feed the 4 lines of your immune system’s defense
 - Supplement with Allomelanin – Rich foods, herbs, oils, etc.
3. Exercise (AYA -180 or equivalent) Expand Lungs | Deep Breathing
4. Kiss the sun to get 10,000 i.u. of vitamin D daily
5. Rest well: 11:30 pm -7:30 am
6. NGOLO gardens: Grow some food!
7. AECC | Enhance your emotional and cultural connections

USE THIS CRISIS TO SPUR US TO REMOVE / REDUCE DEPENDENCY ON DEATH MEDICINE

Your Story *Shapes* Your Immune Response.

• *What story are you repeating?*

5,736,079

99%

94%

**Total Active
COVID-19
Cases World-
Wide as of
7/27 (11:55 AM)**

**Percentage of
Immune
Systems
Winning**

*5,669,683 immune systems are keeping COVID-19 in "mild condition" through to recovery! Only (1%) serious or critical

**Immune
Systems That
Have Already
Won!**

*Of the 10,092,875 closed cases 653,316 (94%) recovered/discharged only (6%) Deaths

Source: <https://www.worldometers.info/coronavirus>

#NGOLO:
Story Healing & Story Defense

ayaed.com





Allomelanins

The origin and nature of the black coloration in plants have been poorly studied (Nicolaus, 1968). The brown to black pigments found in animals, microorganisms and plants are melanins, pigments that have a defensive role in all organisms.

In man and other vertebrates, melanins function in camouflage (Morison, 1985) and photo-protection (Ortonne, 2002). Melanins protect fungi against microbial and environmental stresses such as UV irradiation or desiccation. (Bell and Wheeler, 1986).

In the plant kingdom, the intensity of melanin formation is often correlated with resistance to microbial and viral infections and unfavorable climatic conditions (Bell, 1981). The response of plants to bruising or cutting likewise includes the production of melanins (Marshall et al., 2000). Melanins are biopolymers formed from phenolic compounds by polymerization via quinones. The production of quinones is catalyzed by the phenoloxidases.

[\(Source: Structural Characterization of Allomelanin From Black Oat\)](#)





Phytomelanins

“

New findings on occurrence, deposition, and evolution of phytomelanin in aerial vegetative organs are important advances in the knowledge of this subject, particularly for Asteraceae.

The results indicate that the occurrence of phytomelanin, mainly in vegetative organs, is underestimated and understanding the distribution of this pigment may bring light to new evolutionary perspectives related to this complex plant family. In addition to this evidence, melanins are considered highly protective substances in cells of living organisms, with remarkable functions.

Therefore, considering that studies of the chemical nature of this pigment show a basic structure common among melanized organisms, future melanin research in plants may reveal unexpected ecological and evolutionary implications.”





Saw Palmetto
Serenoa repens







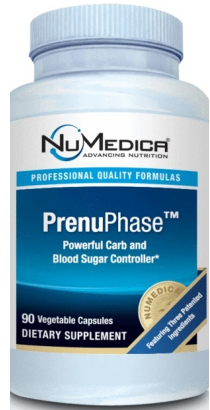








Black Garlic



\$48.00

Blood Sugar Regulator



\$99.00

Immune supporter (Ebay.)

Physicochemical Characteristics of Black Garlic (*Allium sativum* L.)

Physicochemical characteristics of black garlic were analyzed. Colorimetry measurement showed that the black garlic, compared with fresh and steamed garlicks, was the highest in a value and the lowest in L and b values. Crude lipid, crude protein, and total sugars were the highest in black garlic.

Total pyruvate and total thiosulfinates were the lowest in steamed garlic ($77\mu\text{mol}$ and 0.07 OD/g for each) and the highest in black garlic ($278\mu\text{mol}$ and 0.77 OD/g).

Arabinose and galactose were detected only in black garlic and their contents were 1.6 and 13 mg/100 g, respectively. Free sugars such as glucose, sucrose and fructose were the highest in the order of fresh, steamed, and black garlic.

15 kinds of free amino acids were detected in fresh and steamed garlic, while five more free amino acids, **O-phosphoethanolamine**, and urea were additionally detected in black garlic.



Pharmacological Properties of Melanin and its Function in Health

Adila Salih ElObeid¹, Afaf Kamal-Eldin², Mohamed Anwar K. Abdelhalim³ and Adil M. Haseeb³

ing Abdullah International Medical Research Centre, National Guard & Health Affairs, Riyadh, Saudi Arabia, ²Department of Food Science
ited Arab Emirates University, AlAin, United Arab Emirates and ³Physics and Astronomy Department, King Saud University, Riyadh, Saudi
Arabia

(Received 28 September 2016; Accepted 14 December 2016)

Abstract: The biological pigment melanin is present in most of the biological systems. It manifests a host of biological and pharmacological properties. Its role as a molecule with special properties and functions affecting general health, including photoprotective and immunological action, are well recognized. Its antioxidant, anti-inflammatory, immunomodulatory, radioprotective, hepatic, gastrointestinal and hypoglycaemic benefits have only recently been recognized and studied. It is also associated with certain disorders of the nervous system. In this MiniReview, we consider the steadily increasing literature on the bioavailability and functional activity of melanin. Published literature shows that melanin may play a number of possible pharmacological effects such as protective, stimulatory, diagnostic and curative roles in human health. In this MiniReview, possible health roles and pharmacological effects are considered.

Minireview

Impact of Melanin on Microbial Virulence and Clinical Resistance to Antimicrobial Compounds

Joshua D. Nosanchuk, Arturo Casadevall

DOI: 10.1128/AAC.00545-06

Binding is typically reversible, but the retention times can be protracted. For example, chloroquine can be detected in the melanin of the eye for a year after receipt of a single dose (74), and chloroquine therapy is associated with retinopathies (49) that can occur long after treatment (151). In addition to chloroquine, severe retinopathies can occur following melanin binding by chlorpromazine. Chloroquine also accumulates in dermal melanocytes and hair follicles (79), where it can occasionally cause irreversible hearing loss, tinnitus, and dizziness (44). Whereas hearing loss due to chloroquine is thought to be a result of effects on the eighth cranial nerve, quinine can accumulate in melanin in the stria vascularis of the cochlea and cause cellular degeneration (74).

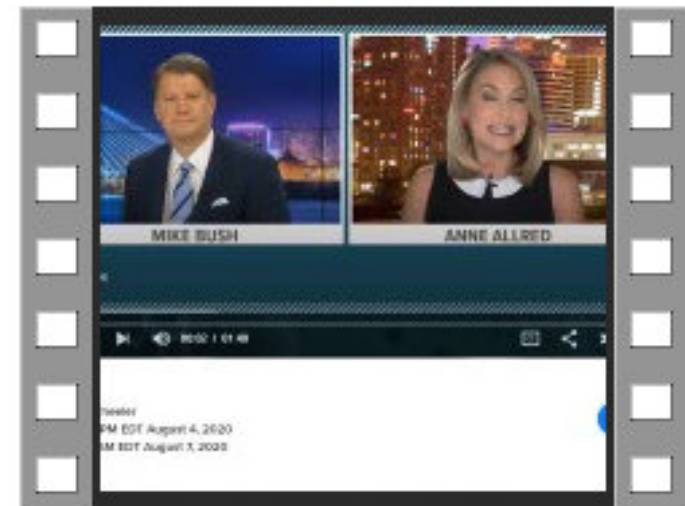
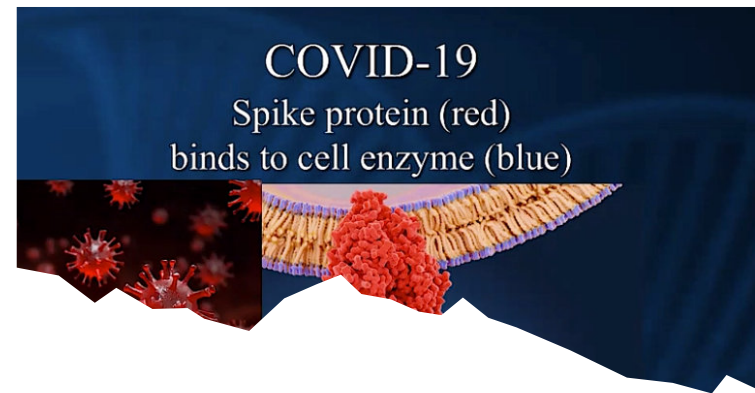




- ▶ Chloroquine Therapy:
- ▶ Associated with retinopathies
- ▶ Causes irreversible hearing loss, tinnitus, and dizziness
- ▶ Damages the eighth cranial nerve
- ▶ Damages vascularis of the cochlea and cause cellular degeneration

nin [30]. They have also reported that antibody-secreting cells produced significantly more antibodies in animals treated with tea melanin (32–34%) than did antigen controls. Similarly, Al-Mufarrej *et al.* (2006) [31] showed that, in albino rats, black seed melanin induced a high and long-lasting antibody response to sheep red blood cells by stimulating the immune system. The immunostimulatory effects of melanin preparations from 30 traditional medical herbs were studied and patented by Pasco *et al.* (2005) [32]. The patent authors reported that the melanins with the highest levels of activity were found in *Allium sativum*, *Tabebuia* spp., *Serenoa repens* and *Echinacea* spp.

Pugh *et al.* (2005) [24] demonstrated that ingestion of these melanins by mice caused dendritic cells in Peyer's patches to secrete high levels of IgA and interleukin-1 (IL-1). In these studies, spleen cells from mice that were fed melanins exhibited increased production of interferon gamma (IFG- γ) as a result of a shift in the balance of T helper 1 and T helper 2 cells (Th1 and Th2, respectively) in favour of Th1. Avramidis *et al.* (1998) [33] found that grape melanin modulates the production of IL-1, IL-6 (interleukin-6) and tumour necrosis factor- α (TNF- α) and significantly inhibited adjuvant-induced disease in rats. They suggested a possible role for melanin in inhibiting lymphocyte Th1 (T4 or T8), which led to the sup-



Interlueken drug to boost immune system.mp4

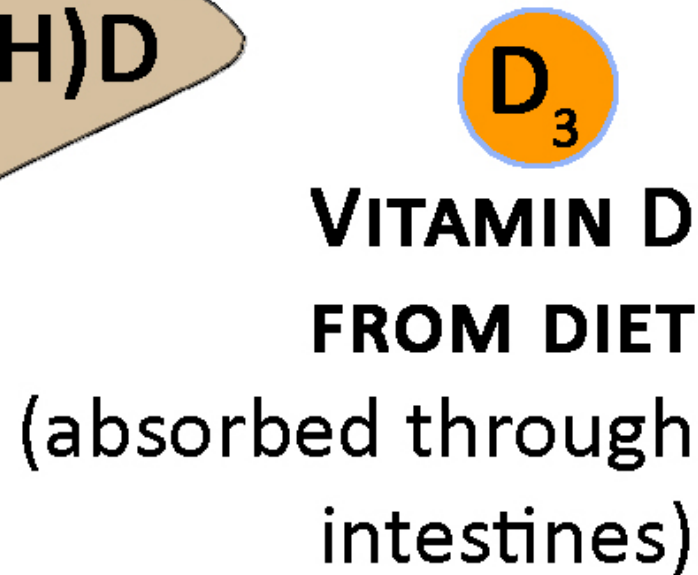
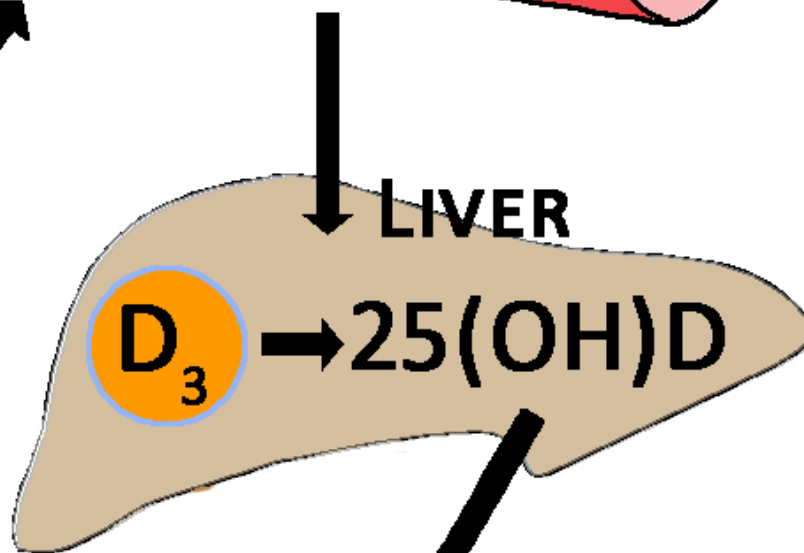
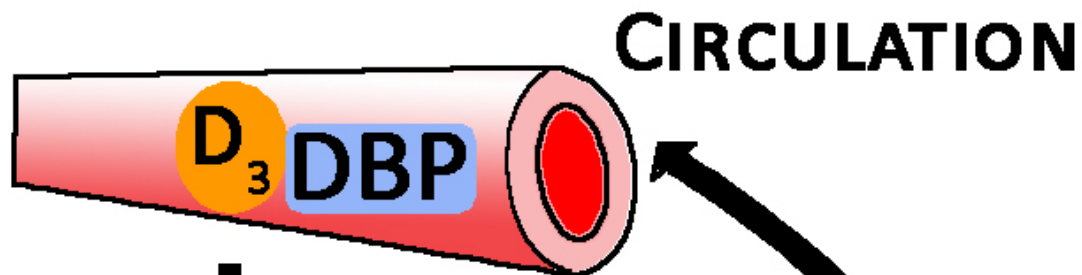
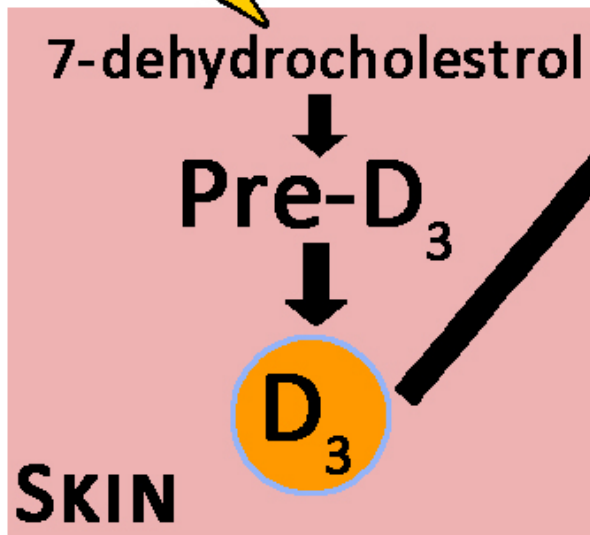






SUN

UVB



Bone

Immune cells



Scientists Experiment On Melanin To Create Advanced Robots And Implants

BY JASON'W. | JUNE 23, 2019

Scientists are now doing new experiments on melanin: hoping to discover a way to manipulate the 'transmutable dark matter found in all living things' (melanin) to create advanced – melanin-based – robots and implant technologies. Essentially, using the essence of what makes people "black" or "brown", replicating that biological archetype, and using that research to create the "cyborg" technology, consciously or unconsciously, attempting to even the score between the people with melanin and the people without it.

Melanocytes as Model System For Neurological Diseases

Skin-derived **melanocytes** offer a model system to investigate normal and pathological behaviors of less accessible nervous system neurons, as they share many signaling molecules and pathways with the latter. One example is using melanocytes to investigate the **pathophysiology** of AD, a currently untreatable disease affecting 35.6 million people worldwide (<http://www.alz.co.uk/research/statistics>).

SCIENCE

Injection of Melanin Nanoparticles Could Make Human Body Radiation-Resistant

Researchers have successfully tested a technique that uses melanin-coated nanoparticles to protect bone marrow from damage commonly sustained during radiotherapy

By Denise Ngo
April 27, 2010

7/11/2019

Black nanoparticles slow the growth of tumors: Melanin as a new diagnosis and treatment tool for tumors -- ScienceDaily

ScienceDaily®

Your source for the latest research news

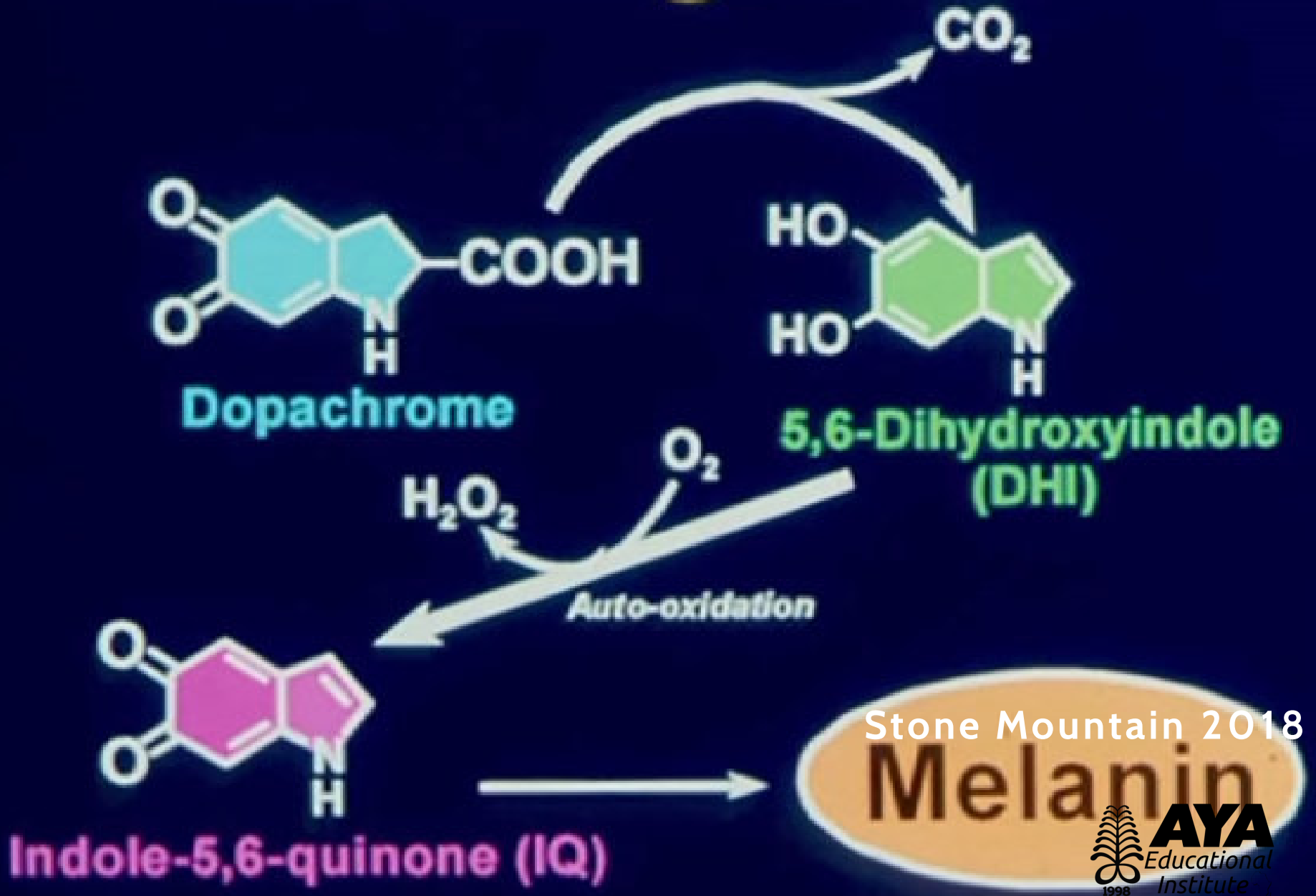
Black nanoparticles slow the growth of tumors Melanin as a new diagnosis and treatment tool for tumors

Date: April 4, 2019

Source: Technical University of Munich (TUM)

Summary: The dark skin pigment melanin protects us from the sun's damaging rays by absorbing light energy and converting it to heat. This could make it a very effective tool in tumor diagnosis and treatment. Scientists managed to create melanin-loaded cell membrane derived nanoparticles, which improved tumor imaging in an animal model while also slowing the growth of the tumor.

Melanogenesis





Melanins and Melanogenesis

by Giuseppe Prota

From these brief introductory remarks, it is clear that melanin and melano-genesis, as a research tool, represent a focus where many separate disciplines converge, their range extending from basic chemistry of the pigment polymer up to the pathophysiology of the pigment-producing cells; and the list can be extended to include the role of neuromelanin in certain neurological disorders, e.g., Parkinson's disease, and the regulatory mechanisms of melanogenesis and their practical implications for controlling skin and hair pigmentation. Such a diversity of interests and expertise has found an excellent meeting ground in the **International Pigment Cell Conferences, which were initiated in 1946** by and continued in memory of Professor Myron Gordon almost every 3 years through the most recent, held in Kobe (1990).

Besides providing a valuable permanent record of new findings in the field, these conferences have yielded another useful by-product, that is, a tradition of multidisciplinary interactions which is uncommon in research.

This has been well emphasized by Fitzpatrick and his associates (see Jimbow et al, 1976), who wrote, "Melanin pigmentation is an ideal subject in which to establish a dialogue between chemistry and medicine, between scientists who work exclusively on animals and clinicians who can develop new insights into basic biological concepts by studying the experiments of Nature."