

ATLANTA-FULTON PUBLIC LIBRARY



R00991 58913

MELANIN:

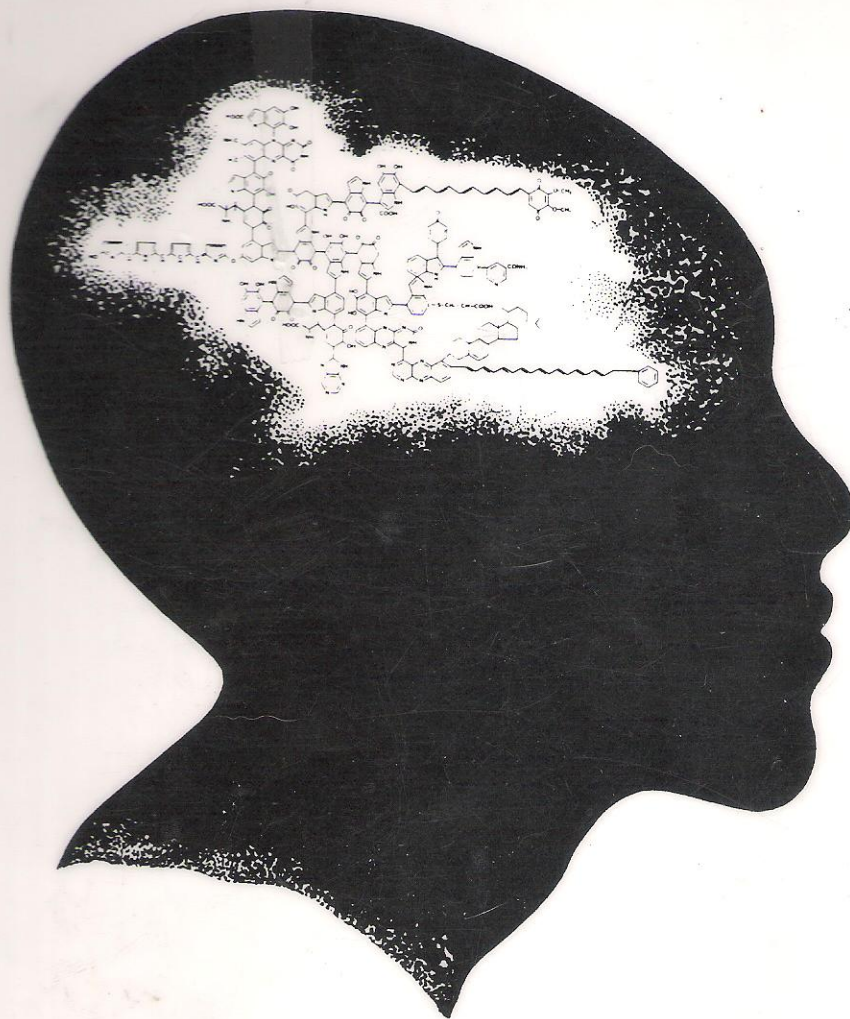
THE CHEMICAL KEY TO BLACK GREATNESS



BLACK GREATNESS SERIES

THE HARMFUL EFFECTS OF TOXIC DRUGS ON MELANIN CENTERS WITHIN THE BLACK HUMAN

VOLUME 1



By Carol Barnes
Senior Research Chemist

810 7027

**MELANIN:
THE CHEMICAL KEY TO
BLACK GREATNESS**

THE HARMFUL EFFECTS OF TOXIC DRUGS
ON MELANIN CENTERS WITHIN THE BLACK HUMAN

ACKNOWLEDGEMENT

Enlightenment on MELANIN is an everyday inspiration for me. I grow constantly! The major contributors to my early knowledge of MELANIN were by two Master Teachers — Dr. Richard King and Hunter A. Adams. Thank you for your guidance! The UNIVERSAL FRAME OF MIND needed to write this document would not have been possible without your teachings.

PREFACE

This report is the first in a series of articles, books, paraphernalia, etc.,
~~on the chemical MELANIN (the substance that gives the BLACK~~
HUMAN his BLACK Color) that will be issued under the caption:

~~“MELANIN BLACK GREATNESS SERIES”~~
“MELANIN BLACK GREATNESS SERIES”

by Carol Barnes

This article, as well as future presentations, is designed to familiar-
~~ize the BLACK HUMAN with MELANIN and its importance to life,~~
memory processes, ancient African history, sunlight, music, dancing,
~~anti-aging, anti-cancer, religion, electromagnetism, and many other~~
scientific and cultural parameters. Much of the literature on the
subject of MELANIN is highly technical in nature and may require a
science background to properly understand and convert the existing/
new technology into “lay” terms. One of the goals of the “MELA-
NIN BLACK GREATNESS SERIES” is to remove the technical
nature of the subject and present MELANIN in “laymen’s” terms to
promote universal awareness of the Greatness of Blackness (MELA-
NIN) among all BLACK HUMANS.

MELANIN:

THE CHEMICAL KEY TO BLACK GREATNESS

Copyright © 1988
Carol Barnes *BLACK GREATNESS SERIES*
Melanin Technologies
ALL RIGHTS RESERVED

BLACK GREATNESS SERIES Reference No. 1-082486; (c) 1988

Fifth Printing: September 2001

Published and Distributed by:

Lushena Books, Inc.
1804 W. Irving Park
Chicago, IL 60613
Tel: 773-975-9945
Fax: 773-975-0045

Library of Congress Catalog Number 90-93238
ISBN: 1-930097-35-2

Printed in the United States of America

TABLE OF CONTENTS

ABSTRACT	1
INTRODUCTION	3
WHAT IS MELANIN?	7
WHY IS MELANIN BLACK?.....	15
HOW MELANIN IS MANUFACTURED IN THE BLACK HUMAN	19
MELANIN PRODUCTION IN THE SKIN	29
MELANIN PRODUCTION IN INTERNAL ORGANS	31
WHAT IS KNOWN ABOUT MELANIN?	35
WHAT IS THE POTENTIAL OF MELANIN?	39
MAJOR ORGANS IN THE BLACK HUMAN THAT CONTAIN HIGH CONCENTRATIONS OF MELANIN	41
CONDITIONS, ACTIONS, TRAITS CONTROLLED BY MELANIN AND MELANIN CENTERS	53
ENERGY STATES/ELECTRON EXCITATION	57
HOW TOXIC DRUGS AND CHEMICALS AFFECT OR ALTER MELANIN'S ROLE AND LIFE FUNCTIONS	69
LIKES DISSOLVE LIKES	73
WHAT ARE ALKALOIDS?	79
EXAMPLES OF ALKALOIDS USED BY THE BODY FOR LIFE FUNCTIONS	81
HIGHLY TOXIC ALKALOIDS THAT ALTER THE CHEMICAL REACTIVITY OF MELANIN	83
CONCLUSION	89
GLOSSARY	93
REFERENCES	97

ABSTRACT

The chemical MELANIN is a unique biopolymer or "life chemical" found in high concentrations in various organs and/or functional centers (Melanin Centers) in the BLACK HUMAN (Black man/woman). In the past, MELANIN was considered by "western scientists" to be a "waste" product of body metabolism and serve no useful function within the body of the BLACK HUMAN. Because of prejudice and foolishness, scientific research on MELANIN moved at a slow pace or was completely ignored. Recently, scientists have discovered that MELANIN is a refined, complex, multifunctional (many accessories) chemical that has a wide variety of important functions within the body of the BLACK HUMAN and in the environment (plants, bodies of water, soil, animals). MELANIN is located in important areas of the nervous system and major organs throughout the BLACK HUMAN.

One property or personality trait exhibited by MELANIN (which is critically important to the well being of the BLACK HUMAN) is its ability to combine or chemically react with various DRUGS AND CHEMICALS. It is proposed here that *addictive & destructive* illegal, TOXIC DRUGS such as COCAINE, LSD, MARIJUANA, HEROIN, AMPHETAMINES, etc., alter or change MELANIN'S chemical structure, electrical charge and electronic configuration thus altering many life supporting activities. These changes may reduce the function of various organs and/or MELANIN Centers in the BLACK HUMAN, thus leading to numerous body disorders such as:

- *mental disorders*
A Reduction in the Creation of Knowledge *What Chris WF show such Lack of Innovation, Lyricality*
- A Reduction in one's Ability to Retrieve Memory from Storage
- A Loss of Motivation
- Skin Rashes
- Cancer

- *A Reduction in One's Ability to Phase into Various Spiritual States or Energy States*
- *High Blood Pressure*
- *Reduced Physical Activity*
- *Early Death*

Furthermore, *legal* drugs used by the medical profession such as tetracyclines, neuroleptics (for treating psychosis), etc., all have a strong affinity for reacting with and/or binding to MELANIN and may be TOXIC to all MELANIN Centers in the BLACK HUMAN.

Finally, environmental herbicides such as PARAQUATS and "AGENT ORANGE" (Dioxane) bind *irreversibly* with MELANIN and remain in the BLACK HUMAN throughout life causing many of the body disorders cited above.

This report is a general outline of MELANIN, its mode of manufacture, location, and influence of cultural parameters. It compares the chemical structure of MELANIN and major social DRUGS such as COCAINE, LSD, and MARIJUANA, and shows that the structural similarities of TOXIC DRUGS and MELANIN lead to BODY DISORDERS and DEATH in the BLACK HUMAN!! Future directions relative to research and development and controlling the MELANIN environment are also outlined.

MELANIN: THE CHEMICAL KEY TO BLACK GREATNESS

INTRODUCTION

The BLACK HUMAN is blessed by nature in that he or she is endowed with a highly functional chemical that regulates essentially all bodily functions and activities. The BLACK HUMAN is distinguished from other human species in that he or she tends to have a *higher number* of organs and body systems that contain *high concentrations* of a chemical that is BLACK in color. This chemical is called MELANIN and is responsible for manufacturing and sustaining life.

MELANIN is located in important areas (1) of the BLACK HUMAN such as:

- *Central Nervous System*
- *Autonomic (Automatic) Nervous System*
- *Peripheral (outlying, surface) Nervous System*
- *Diffuse Neuroendocrine (Glands) System*
- *Visceras (Major Internal Organs)*

Because of its pervasive presence in the organs, nervous systems and glands cited above, you would expect MELANIN to serve some vital function or nature would not have incorporated it into these systems!!!

The areas of MELANIN biology and pathobiology have significantly advanced over the past 40 years since the first international conference in 1946 which was designed to thoroughly evaluate the chemical MELANIN (2,3). It appears that "western scientists" are indeed interested in the BLACKNESS of the BLACK HUMAN and have justified its importance by spending millions of dollars annually for its study. At the same time, the BLACK HUMAN is told and instructed that his BLACKNESS is not important. Some white dermatologists today are afraid of MELANIN and believe it to be a "THREATENING" chemical. Whites are afraid of BLACKNESS and develop

hypotheses to support their beliefs (6). This lie or fear is a continuation of the mental genocide that has hampered the BLACK HUMAN'S progress for over 2000 years or since the fall of the BLACK EGYPTIAN civilization in 332 B. C.

I could write on and on about the problems of the BLACK HUMAN but it is my intention to present in this report a critical issue that is facing the BLACK HUMAN today. The issue, simply stated, is that "THE ENTIRE SOCIETY OF THE BLACK HUMAN IS BEING DESTROYED WITH TOXIC DRUGS, CHEMICALS, AND ELECTROMAGNETIC ENERGY OR RADIATION". These TOXIC DRUGS, etc., are directly and indirectly being forced upon our community by white society. The BLACK HUMAN also participates in this inhumane procedure due to lack of awareness of his past, present, future, and his reason for existing on the planet, and in the universe.

The BLACK HUMAN'S body chemistry is the most refined, complex and sophisticated of any human species in existence today. This refinement shows itself in the high mental and physical capabilities as well as the tailored facial features and body structure of the BLACK HUMAN. The individual reading these lines may identify with the physical capabilities but may deny the mental capabilities due to western civilization. Let me assure you that your MENTAL processes (BRAIN POWER) are controlled by the same chemical that gives BLACK HUMANS their superior physical (athletics, rhythmic dancing) abilities. This chemical, again my friends, is MELANIN! The Japanese and other Orientals have higher MELANIN levels than whites (4). They are demonstrating excellent mental capabilities with the superior technology that they are marketing around the world. One then may ask, "Why hasn't the BLACK HUMAN progressed in white society?" "What is keeping him from obtaining high goals?" "Why are other human species with less mental/physical capabilities (100% less) able to acquire wealth, own and run large corporations, and lead nations, effectively?"

The answer to this question includes major concerns such as:

- *Lack of Economic Independence*
- *Lack of Leadership*
- *Lack of Organization*
- *Crab Effect*
- *Poor Education*

-
- *Lack of Knowledge of our Great History*
 - *Poor Health*
 - *Negative Western Influence*
 - *Inferiority Complex*

We are faced with many problems as a people and each problem must be studied and solved individually. All of the problems which are afflicting the BLACK HUMAN cannot be solved overnight. As expertise and professionalism grow in BLACK society, it is believed that major problems and concerns will eventually be addressed by BLACK HUMANS with a particular professionalism unique to that problem and concern (provided the individual is "conscious" and has developed an Afrocentric mentality). This "approach" is haphazard but until we unite as a people it will have to suffice.

As cited earlier, TOXIC DRUGS and CHEMICALS are destroying the heart of BLACK SOCIETY and causing many deaths. Toxic drugs such as COCAINE, LSD, and MARIJUANA are very SIMILAR to MELANIN and the sub-units that make up MELANIN (tyrosine, melatonin, other alkaloids). These similarities in chemical structure cause the addicting and toxifying effects of these drugs to:

- *Work at a faster pace*
- *Cause a user to experience higher "highs" and lower "lows"*
- *Remain in the BLACK HUMAN 'S system for longer periods of time*

These similarities are presented in this report in an attempt to expose the BLACK HUMAN, politicians, the scientific community, and others to the importance of eliminating TOXIC DRUGS and CHEMICALS from the body and the environment in which the BLACK HUMAN lives.

WHAT IS MELANIN?

What is MELANIN? This is the most frequently asked question by the BLACK HUMAN when the subject of MELANIN enters into the conversation. Throughout our entire lives, we, as BLACK HUMANS, recognize MELANIN visually as the BLACK chemical in our skin, eyes, and hair. However, for the past several hundred years it has not "sparked" our interest. We just take it for granted or we feel "negative" about it because it causes the BLACK HUMAN so many problems and discomforts in western society. MELANIN has chemical and physical properties (personality traits) which distinguish it from other chemicals and is so fantastic it may be considered "DIVINE". The BLACKNESS OF MELANIN is a physical property. This physical property (BLACKNESS) only designates the color of MELANIN. MELANIN has other physical properties such as:

ODOR - MELANIN has a pleasant smell - which is important in sexual attraction. This odor may be attributed to the highly aromatic (perfume) trait, amine or Nitrogen functional group and sulfur/or elemental metal content within its structure.

THERMAL RESISTANCE - Melanin can be exposed to 1225°F and retain approximately 50% of its original properties.

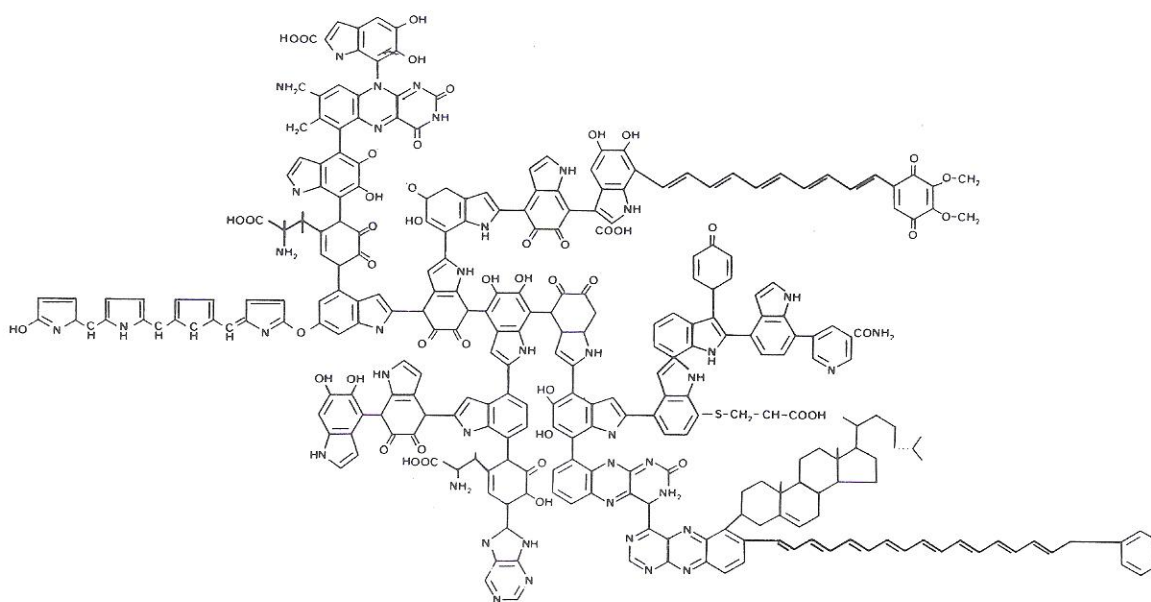
TOUGHNESS - MELANIN'S structure of aromatic rings makes it rigid but flexible like rubber or plastic. This physical property is why the BLACK HUMAN'S skin is tough and hard to penetrate with a medical syringe. MELANIN also causes the expressive, flamboyant and cocky nature of the BLACK HUMAN (toughness).

In this report, we will discuss MELANIN with regard to its chemical properties or chemical personality. This "approach" may begin to help the BLACK HUMAN realize his GREATNESS and SUPERPOTENTIAL.

The chemical structure of MELANIN is shown in Figure-1. Please take a good look at this chemical structure and commit it to memory!! Copy the structure on paper repeatedly!! This will help you to memorize it in an easy manner. You should be very familiar with this structure. It has caused the BLACK HUMAN much bloodshed and suffering....just because it is BLACK!! However, BLACK HUMANS, please remember, MELANIN is a very great and marvelous molecule because it organizes and supports virtually all areas within your BLACK BODY and keep you in constant contact with the chemistries of the universe!

FIGURE 1

MELANIN



This is an example of a MELANIN MOLECULE. There are many types of MELANINS; each type/structure depends on the monomer units utilized. At the time of this writing the exact structure is not known. MELANIN is an extremely stable molecule and resists most advanced methods of analysis such as resistance to digestion by strong acids and bases, x-ray diffraction, etc. To date, the research developed on MELANIN attests it is indeed a fantastic molecule (the above structure was taken from "Melanin: the Organizing Molecule" by Dr F. E. Barr: see reference # 1).

The word MELANIN¹ when broken down into its sub-components may be defined as follows:

- *Melano (Greek Word) = BLACK*
- *The Word MEL is derived from Melano*
- *Therefore, MEL = BLACK*
- *ANIN is derived from a similar word called amine*

AMINE is a nitrogen based functional group derived from ammonia (NH₃) and is designated in chemistry as a hydrocarbon amine when it is attached to a hydrocarbon. Hydrocarbons are chemical units that contain carbon and hydrogen atoms (See Figure-2)

Therefore, MELANIN = BLACK AMINE

Brothers and Sisters, it appears that a chemical that is really a **BLACK HYDROCARBON AMINE** is the substance that has caused the **BLACK HUMAN** most of his suffering and oppression for over 2000 years. You know, it's funny how **CHEMICALS** are even **TOXIC** from a **SOCIAL, CULTURAL, and POLITICAL** viewpoint (applied chemistry).

¹*There are many people around the world who are professionally involved with chemistry: chemist, biochemist, pharmacist, etc. Individuals in other professions have also taken a college course in general chemistry. They are probably unaware of the fact that this subject had its origins in Egypt and Ethiopia and points to a knowledge of science by the ancient BLACKS (5). First, let's define the word "CHEMISTRY":*

CHEM - comes from the word KHEM which is what the Greeks called Egypt in ancient times. The Greeks added the vowel (e) to the Egyptian word KHM to come up with the word KHEM. KHM was used by ancient BLACKS as a term to designate the people of their land. KHEM has been misinterpreted by western scientist to mean "THE BLACK LAND" in reference to the soil.

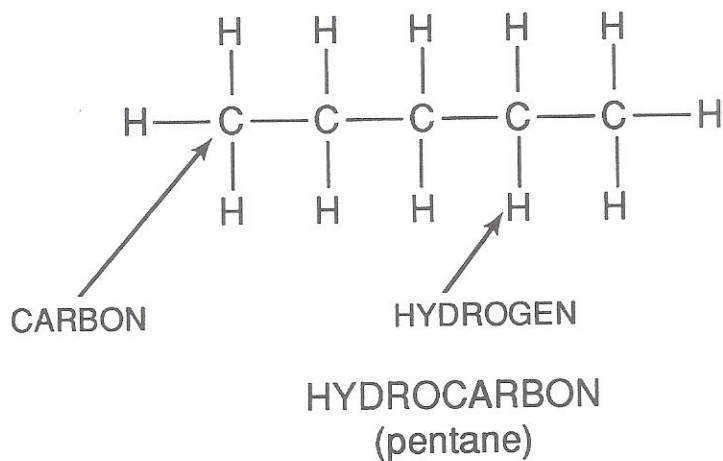
ISTRY - the study of a particular subject!

Chemistry - the study of the BLACKS or BLACKNESS. BLACKNESS (found in ancient and modern BLACKS) is caused by the chemical MELANIN. Therefore, the study of BLACKNESS = the study of MELANIN! CHEMISTRY = THE STUDY OF MELANIN (BLACKNESS).

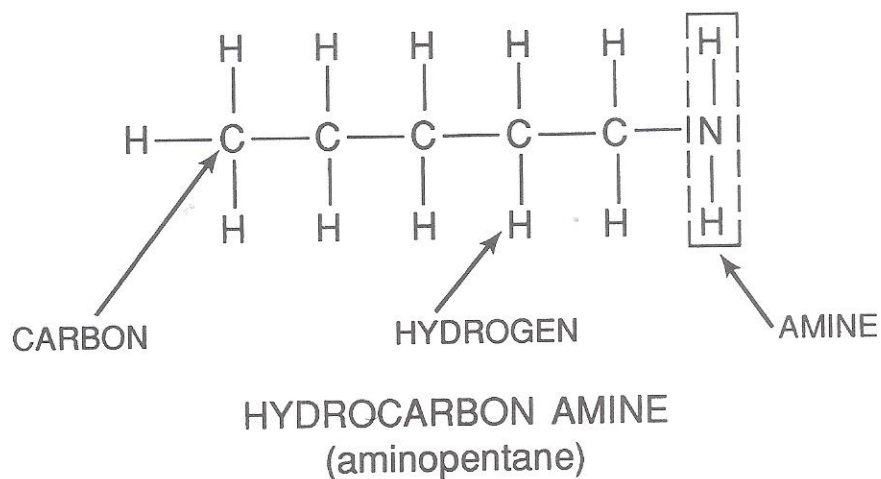
FIGURE 2

HYDROCARBON AND HYDROCARBON AMINE

A



B



STRUCTURE (A) shows a typical hydrocarbon species that contains only carbon and hydrogen

STRUCTURE (B) shows a typical hydrocarbon species that contains an amine group. This is a simple version of a hydrocarbon amine.

MELANIN is a biopolymer of undetermined size. The term MELANIN is used to represent chemical structures that range in color from GOLDEN BROWN to BLACK and are manufactured in the body from smaller chemical units such as:

- *Phenylalanine (1, 2)*
- *The Amino Acid Tyrosine*
- *Catecholamines such as:*

Dopamine

Norepinephrine

Epinephrine (Adrenaline)

All of these smaller sub-units polymerize (form a chain) into MELANIN. Furthermore, indoleamines such as:

- *Serotonin (derived from dietary tryptophan)*
- *Melatonin/Melatonin derivatives (B-Carbolines) (produced by the PINEAL GLAND)*

....also polymerize and co-polymerize to form MELANIN (See Figure-3).

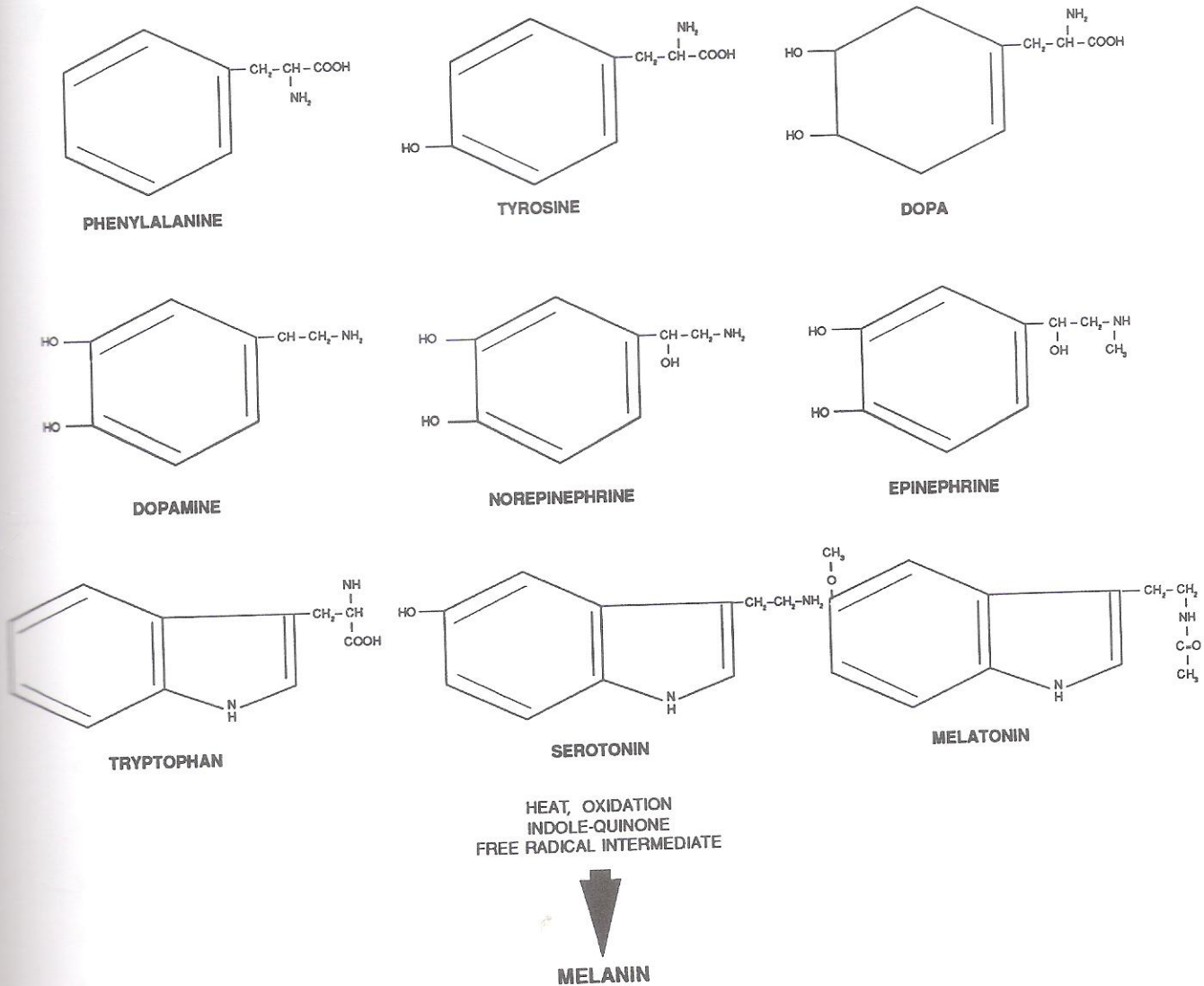
Other chemicals such as:

- *Purine*
- *Pteridines*
- *Napthquinone*
- *Anthraquinone*
- *Phenoxazones*
- *Polycyclicquinone*
- *Flavin*
- *Flavonoid*

....either polymerize or co-polymerize into the MELANIN structure.

FIGURE 3

CHEMICALS IN THE BLACK HUMAN THAT POLYMERIZE INTO MELANIN



MELANIN at this point may be defined as a heterogeneous (different sub-units) polycyclic (many circles or rings) polymer of high molecular weight (many chain links) containing several types of important bond linkages (saturated carbon-carbon, unsaturated carbon-carbon, carbon-nitrogen, peroxides, ether, quinone, organometallic, etc.) and are generally BROWN to BLACK in color. Different chemical sub-units, bond types and functional groups arranged in a specific order give MELANIN its unique chemical and physical properties.

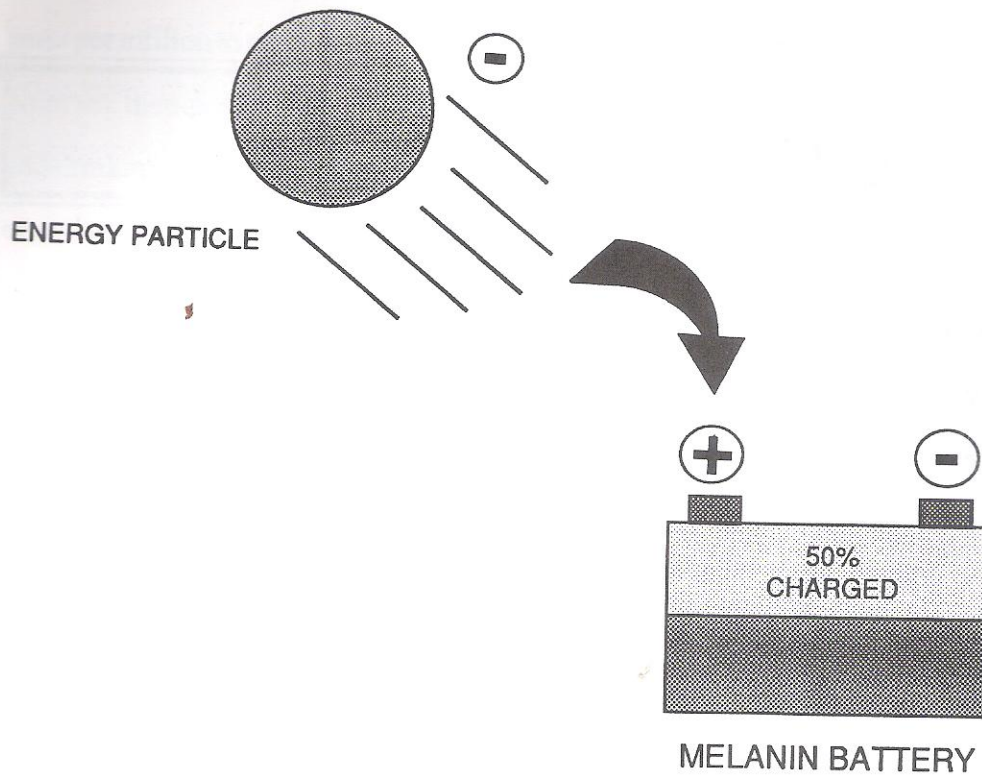
MELANIN is also found in our environment in places such as the soil, plants, animals, and in the waters of creeks, lakes, springs, seas and rivers (7). The concentration in bodies of water varies from

parts per million to parts per billion and it exists as soluble MELANIN in these liquid phases. This may point to a therapeutic property of MELANIN in a society that uses natural sources of water for cooking and drinking. In plants and animals *in vivo* MELANIN behaves as a protective device against invading organisms (8). This may also apply to soluble MELANIN that is ingested as a food source.

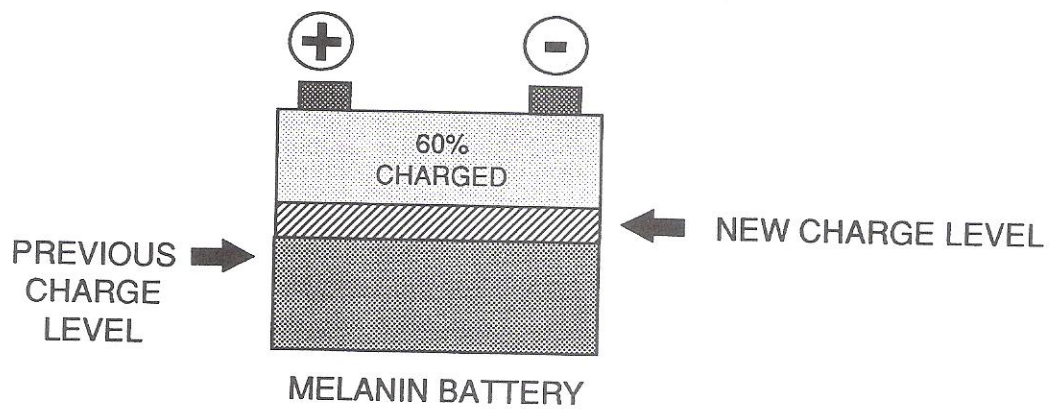
WHY IS MELANIN BLACK?

MELANIN is BLACK simply because its chemical structure will not allow any type of energy to escape once that energy has come into contact with its structure. A number of steps must take place within the MELANIN structure to accomplish this task of becoming totally efficient toward capturing energy. When these steps are completed, no energy is reflected away from the surface of the MELANIN structure. The human eye sees the color of an object as light reflects from the surface of that object. If no light or energy is reflected, then that object will appear to the eyes to be BLACK in color. If all of the energy is reflected from the surface of an object, that object will appear white in color. If an object is red in color, that means that the object is absorbing all energy around it except the red energy which is reflected away from the object. The eyes capture and process the red light that is reflected. Therefore, you see red!!

Let's look a little closer at how MELANIN captures energy. Light energy from the sun or artificial sources like your indoor light bulb or vibrational sounds from your stereo, all cause MELANIN to be BLACK in color. For instance, a light wave leaves the sun or your stereo in the form of energy particles and/or vibrational sounds and travels in space until it contacts the MELANIN structure in your skin, and other areas of the body where it is absorbed by MELANIN. MELANIN may be viewed as a battery that is partially charged and can always accept an electrical charge! In the case below, the MELANIN battery is 50% charged.



When the energy particle from sunlight or your stereo comes in contact with the (+) pole of the MELANIN battery, it will increase the "charge" of the MELANIN battery to a certain degree. Let's say 60%! (See illustration below.)

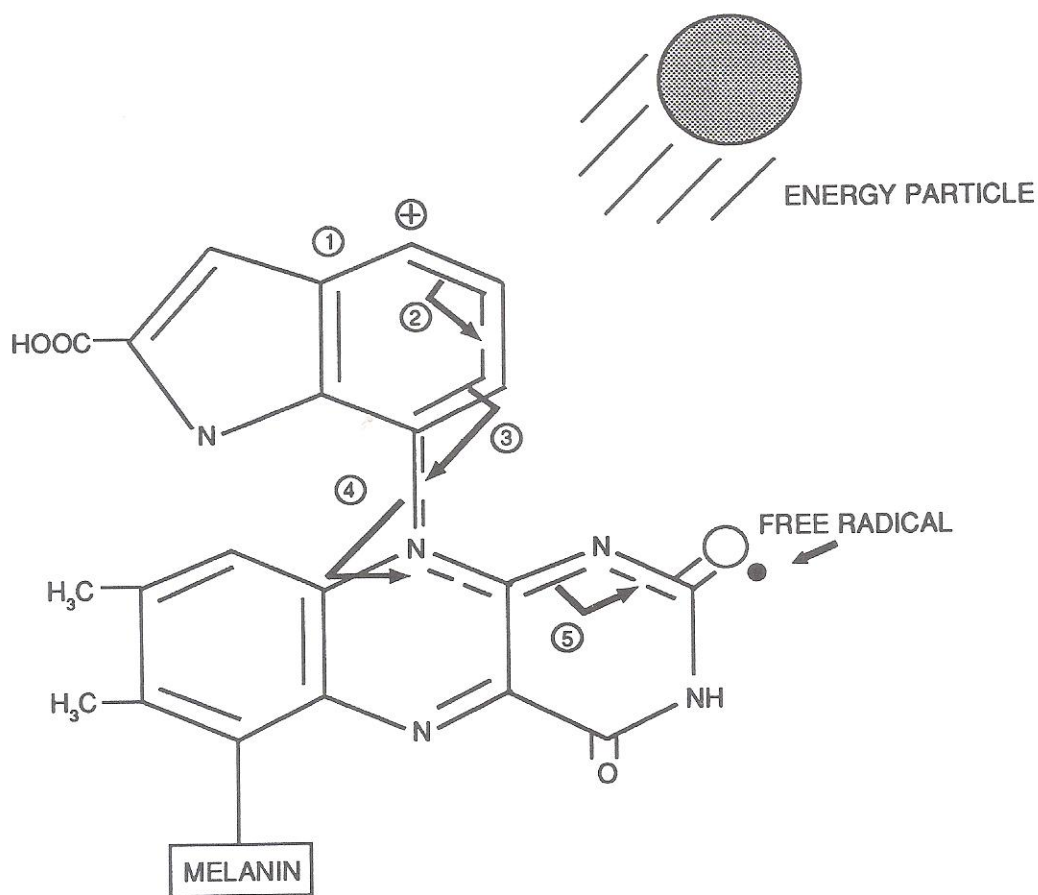


When the energy is captured, the MELANIN battery has more energy to utilize in body metabolism and memory processes. MELANIN obtained this energy "free", directly from its surroundings. This means that the BLACK HUMAN can charge up his MELANIN just by being in the sun or around the right type of musical sounds or other energy sources.

What happens on the molecular level is that electrons in MELANIN'S molecular orbitals rearrange themselves and undergo what is known to science as *resonance*. This rearrangement of electrons causes certain double bonds to shift their position to sites in the MELANIN molecule that are low in energy. Let's look at a small fragment of the MELANIN structure to illustrate *resonance*.

EXAMPLE:

MELANIN FRAGMENT



The energy particles enter the molecule at the positive (+) pole (Step #1). The dotted lines (...) in the chemical structure (outlined with the arrows) show how the double bonds (double lines) move around in the structure to lower energy sites to deposit the new energy that is absorbed by the molecule. The shifting of the double bonds will continue until a stable area (stable free radical) is obtained within the structure and the energy is safely captured. This energy can now be used in body metabolism. This is an example of MELANIN "eating energy" from its surroundings and is an excellent chemical property!!! That, my friend, is why MELANIN is BLACK! MELANIN can rearrange its chemical structure to absorb all energy across the radiant energy spectrum. This includes forms of energy such as:

- *Sound (Music/Ultrasonic)*
- *Radar Waves*
- *Radio/TV Waves*
- *Microwaves*
- *Thermal/Radiant Heat*
- *Visible Light*
- *X-Ray*
- *Cosmic Rays/U.V. Light*
- *Earth's Magnetic Energy*
- *Electromagnetic Energy*

This is further confirmed by McGinness (9). He states that an efficient phonon coupling to excited electronic states (light-sound) allows absorbed radiation (energy) to be partially or totally retained in the sense that the energy is transferred to the internal degrees of freedom (resonance) of the macromolecule, rather than being reradiated as visible or u.v. light".

HOW MELANIN IS MANUFACTURED IN THE BLACK HUMAN

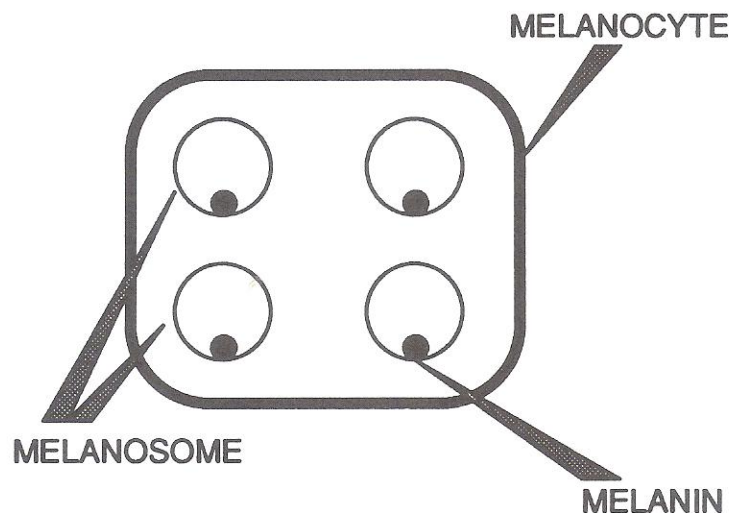
MELANIN is manufactured (1,2,10) in highly specialized cells called:

- MELANOCYTES (BLACK CELLS)

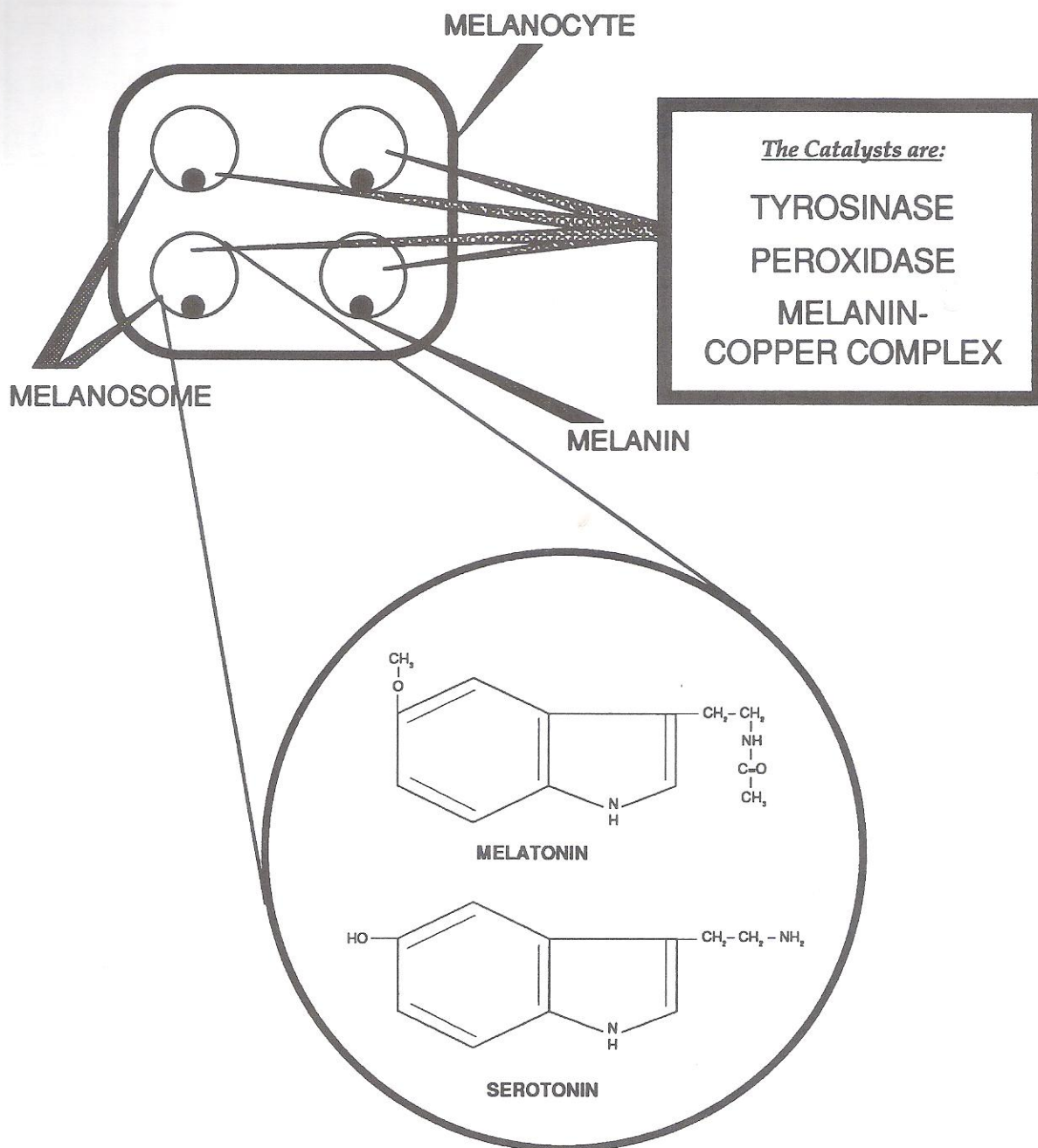
It is also believed that MELANIN is manufactured in other cells such as:

- LEUKOCYTES (*White Blood Cells*)
- MAST CELLS

MELANIN is produced inside the melanocytes by a smaller species (organelle) called the melanosome. Melanosomes are membrane-bound vesicles that have their origin in the endoplasmic reticulum. (See diagram below.)



The manufacture of MELANIN in the skin and various organs throughout the body of the BLACK HUMAN depends on a catalyst (battery) located within the MELANOSOME. The catalyst or battery provides the necessary energy to convert small chemical units such as tyrosine, serotonin, melatonin, etc., to MELANIN.



- Tyrosinase is a large organic substance that is bonded to copper metal.
- Peroxidase (Heme enzyme) is believed to manufacture **MELANIN** through the aid of existing **MELANIN**.
- The **MELANIN-Copper** species is produced when **MELANIN** (in a similar manner to tyrosinase) binds to copper metal.

It is believed that this MELANIN-Copper species can work in the absence or presence of the tyrosinase catalyst to manufacture MELANIN. This is very significant because it gives MELANIN the ability to REPRODUCE ITSELF when other sources are not available or when other sources are at low levels or concentrations which are not sufficient for MELANIN manufacture.

The concentration or degree of BLACKNESS of various organs or MELANIN CENTERS throughout the body of the BLACK HUMAN depends on:

- CATALYST CONCENTRATION
- CATALYST CHEMICAL REACTIVITY OR CATALYST ELECTRICAL CHARGE
- MELANIN TYPE AND MOLECULAR WEIGHT

These parameters are the genetic basis that determine the continual production of MELANIN throughout the entire life of the BLACK HUMAN. The degree of BLACKNESS can be further enhanced above and beyond the genetic basis by the action of solar radiation (sunlight, U.V. light, cosmic rays, etc.) and other chemicals utilizing the MELANIN producing catalyst within the MELANOSOMES. This is commonly called suntan! Music (jazz, reggae, juju, soul, etc.) also plays a role in MELANIN manufacturing.

The albino(white man) has numerous body defects due to the lack of the genetic to produce EUMELANIN. Their MELANOCYTES, MELANOSOMES, and MAST CELLS, etc., do not contain the proper catalyst concentration, chemical reactivity and/or electrical charge needed to produce significant levels of EUMELANIN in various MELANIN Centers throughout their bodies. They produce a less effective lower molecular weight MELANIN called phaeomelanin or pseudomelanin. Therefore, their organs and systems which depend upon MELANIN to work effectively do not operate well and may suffer numerous disorders such as rapid aging, cancer, poor physical and mental capabilities, low morals, racism, etc. (11,12,13,14,15,16).

Tyrosinase activity or catalyst activity in various racial groups is outlined in Figures 4, 5, 6, (4). Racial traits due to MELANIN or the lack of MELANIN may be summarized as follows: (Also see Figure 6)

TYPE 1 - These individuals are white and cannot produce MELANIN.

They have blue eyes, blond or red hair, white skin and often have freckles.

They have a Celtic background (Irish, Scottish, Welsh).

They are most prone to develop melanoma and other types of skin and organ cancer.

They show skin aging early in life between the ages of 25-30 years.

TYPE 2 - These individuals are white and produce very low levels of MELANIN.

They have hazel or blue eyes.

They have red or blond hair.

They often have freckled skin.

They are very prone to developing skin cancer.

They show skin aging early in life, between 25-30 years.

TYPE 3 - These individuals are white and produce moderate to low levels of MELANIN.

They have blond, brunette or lightly pigmented hair. They show a moderate to high risk of developing skin or other organ cancer.

They show skin aging by the age of 30-40 years.

TYPE 4 - These individuals are whites who are lightly tan and include Japanese, Chinese, Italian, Greeks, Spanish, and Red Indians.

They produce moderate levels of MELANIN.

They show a moderate risk of developing skin or other organ cancer.

TYPE 5 - These individuals are brown-skinned and include Mexicans, Indians, Malaysians, Puerto Ricans, and other Spanish speaking people.

They produce moderate to high levels of MELANIN.

Their eyes and hair are deep brown or black.

They show aging after the age of 50.

They seldom develop skin or other organ cancers.

TYPE 6 - These individuals are BLACK in color and include AFRICANS (EGYPTIANS, ETHIOPIANS, NIGERIANS, ETC.) AMERICAN BLACKS and AUSTRALIAN ABORIGINES!

Their eyes and hair are BLACK!

They virtually have no incidence of skin cancer!

They show skin aging after the age of 50-60 years.

Tyrosinase activity or catalyst activity in various racial groups is outlined in Figures 4, 5, 6, (4). Racial traits due to MELANIN or the lack of MELANIN may be summarized as follows: (Also see Figure 6)

TYPE 1 - These individuals are white and cannot produce MELANIN.

They have blue eyes, blond or red hair, white skin and often have freckles.

They have a Celtic background (Irish, Scottish, Welsh).

They are most prone to develop melanoma and other types of skin and organ cancer.

They show skin aging early in life between the ages of 25-30 years.

TYPE 2 - These individuals are white and produce very low levels of MELANIN.

They have hazel or blue eyes.

They have red or blond hair.

They often have freckled skin.

They are very prone to developing skin cancer.

They show skin aging early in life, between 25-30 years.

TYPE 3 - These individuals are white and produce moderate to low levels of MELANIN.

They have blond, brunette or lightly pigmented hair. They show a moderate to high risk of developing skin or other organ cancer.

They show skin aging by the age of 30-40 years.

TYPE 4 - These individuals are whites who are lightly tan and include Japanese, Chinese, Italian, Greeks, Spanish, and Red Indians.

They produce moderate levels of MELANIN.

They show a moderate risk of developing skin or other organ cancer.

TYPE 5 - These individuals are brown-skinned and include Mexicans, Indians, Malaysians, Puerto Ricans, and other Spanish speaking people.

They produce moderate to high levels of MELANIN.

Their eyes and hair are deep brown or black.

They show aging after the age of 50.

They seldom develop skin or other organ cancers.

TYPE 6 - These individuals are BLACK in color and include AFRICANS (EGYPTIANS, ETHIOPIANS, NIGERIANS, ETC.) AMERICAN BLACKS and AUSTRALIAN ABORIGINES!

Their eyes and hair are BLACK!

They virtually have no incidence of skin cancer!

They show skin aging after the age of 50-60 years.

FIGURE 4

TYROSINASE ACTIVITY BASED ON MAXIMUM MELANIN PRODUCTION IN VARIOUS SKIN TYPES OR RACES

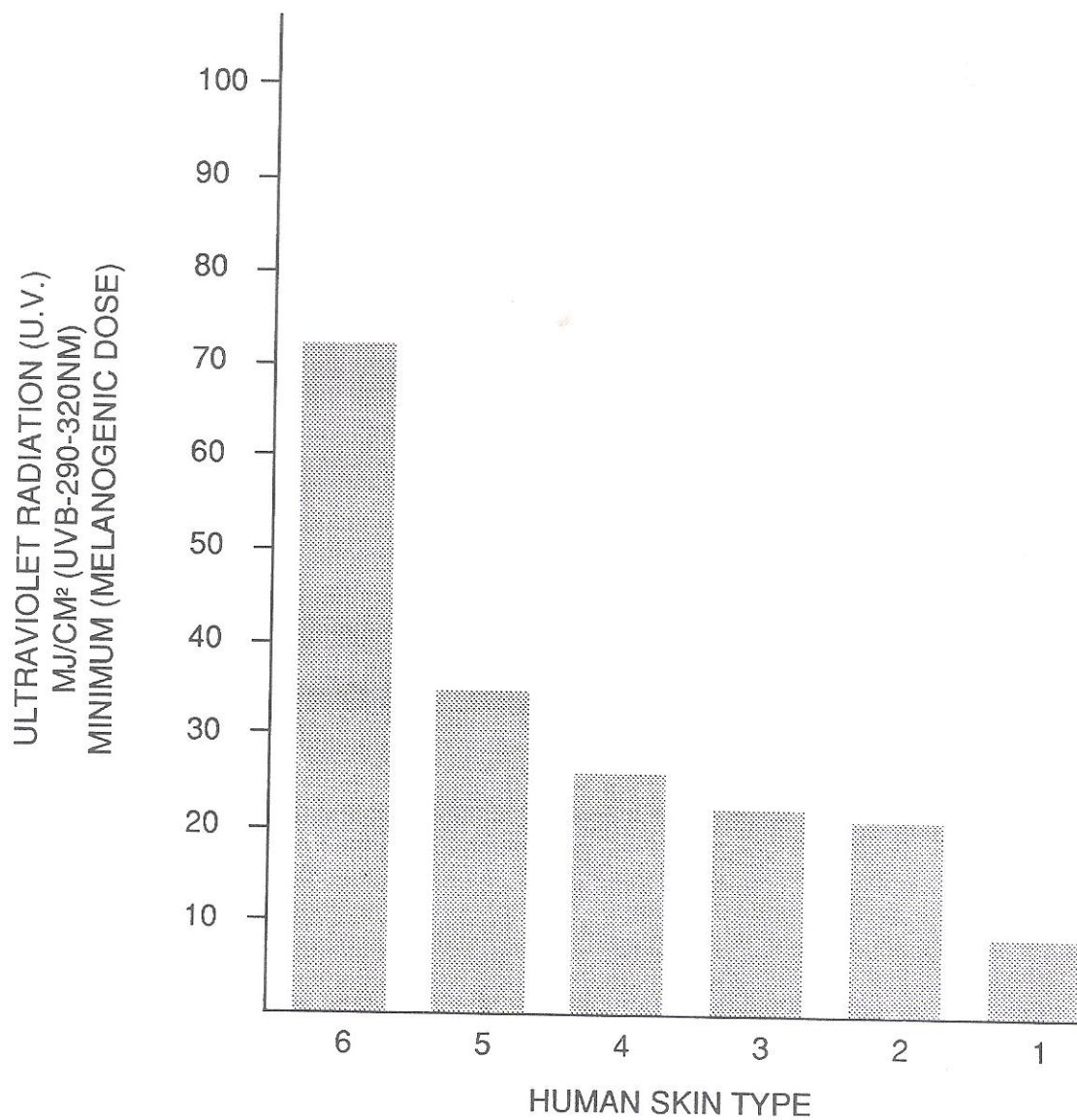


FIGURE 5

MAXIMUM DOSE OF U.V. NECESSARY TO CAUSE SKIN DEGENERATION IN VARIOUS SKIN TYPES OR RACES

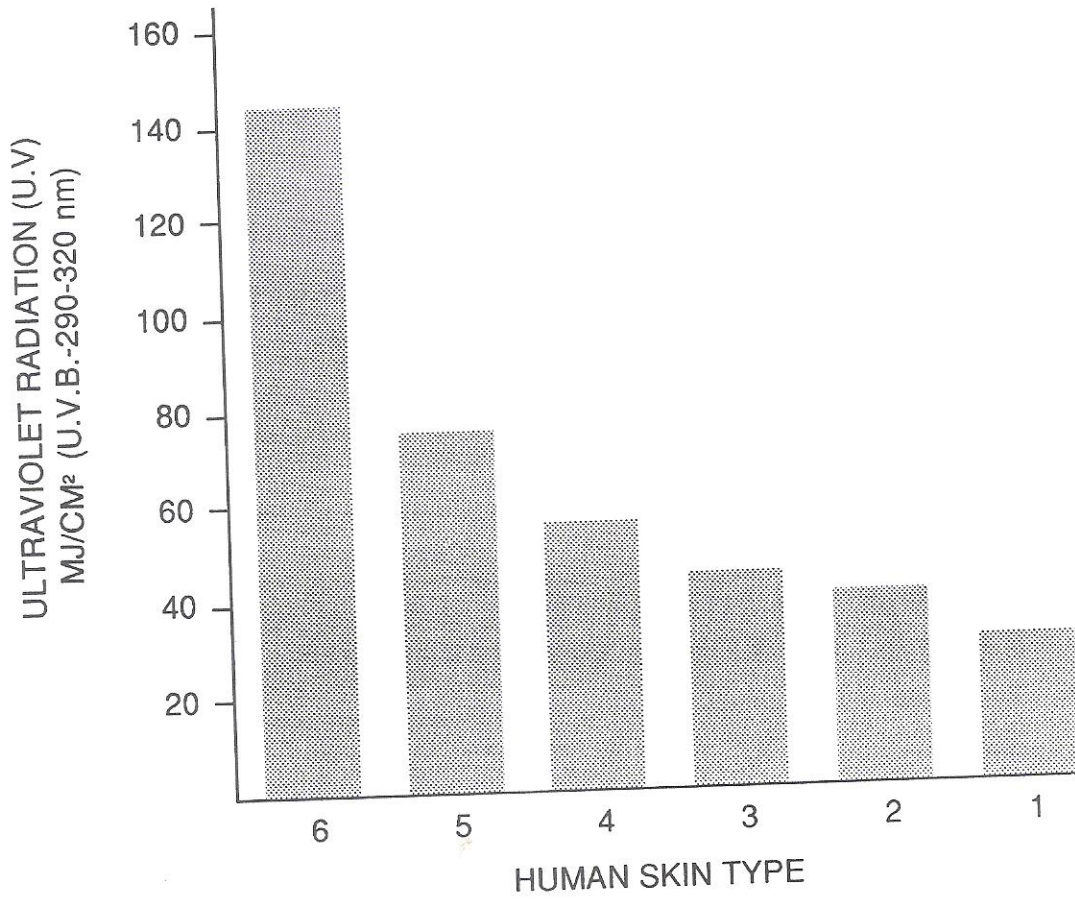
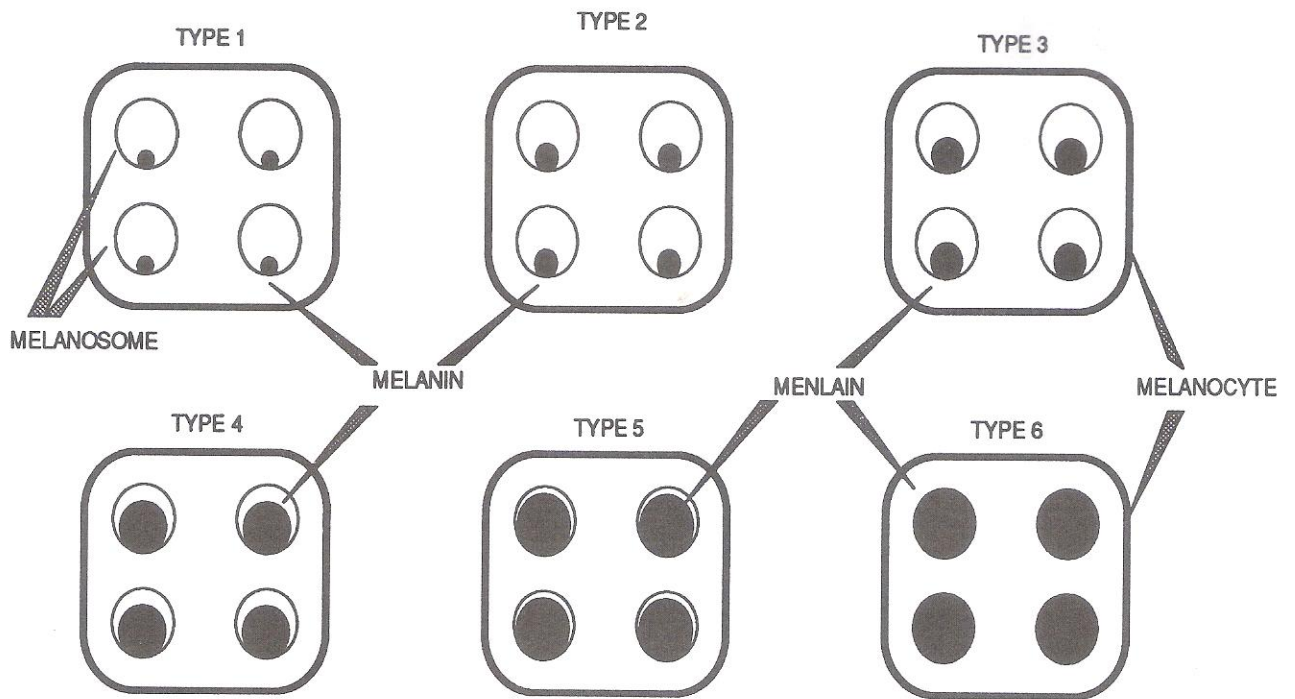


FIGURE 6

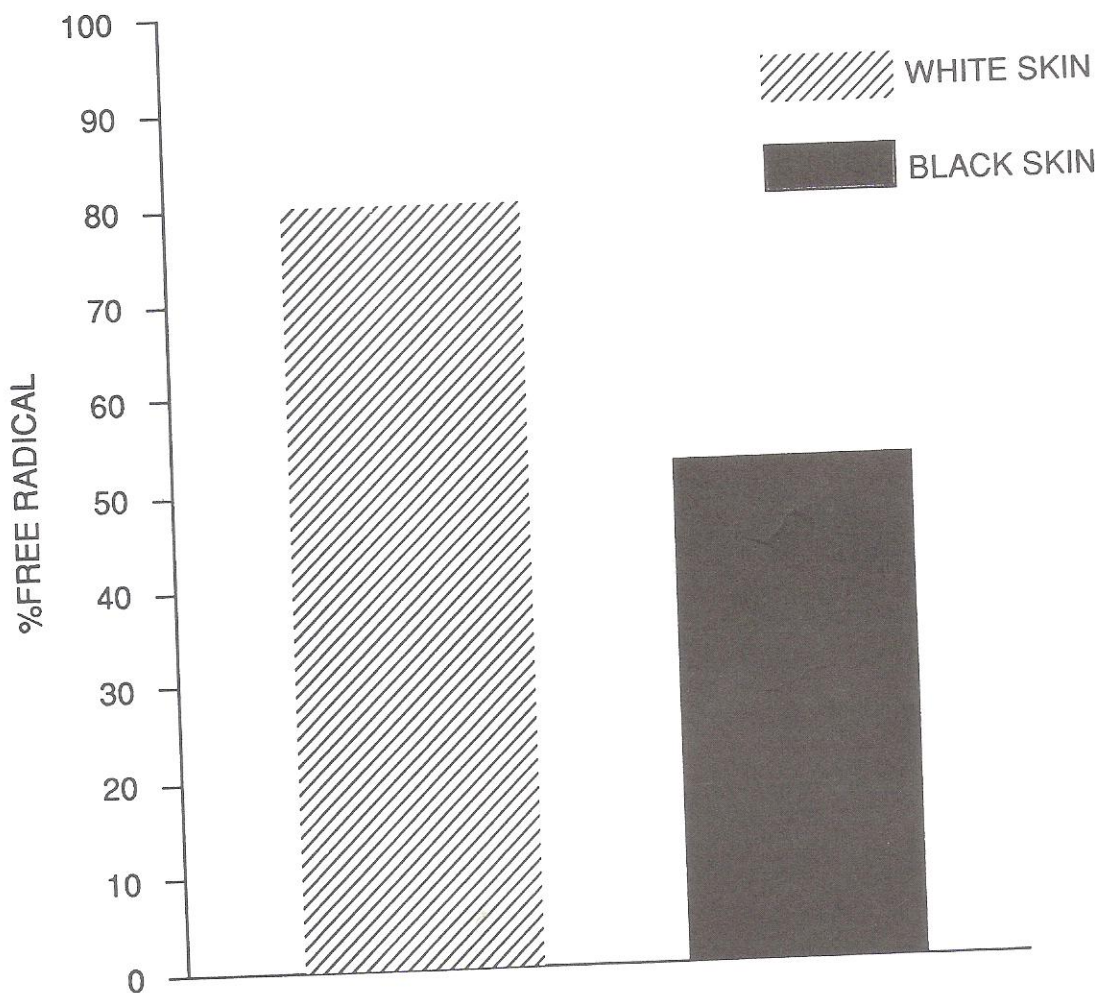
MELANIN MANUFACTURED IN RACIAL GROUPS



Lack of MELANIN reduces one's ability to neutralize free radicals thus reducing an individual's resistance to skin cancer. This may also be true for many other internal forms of cancer. (See figure 6A.)

FIGURE 6A

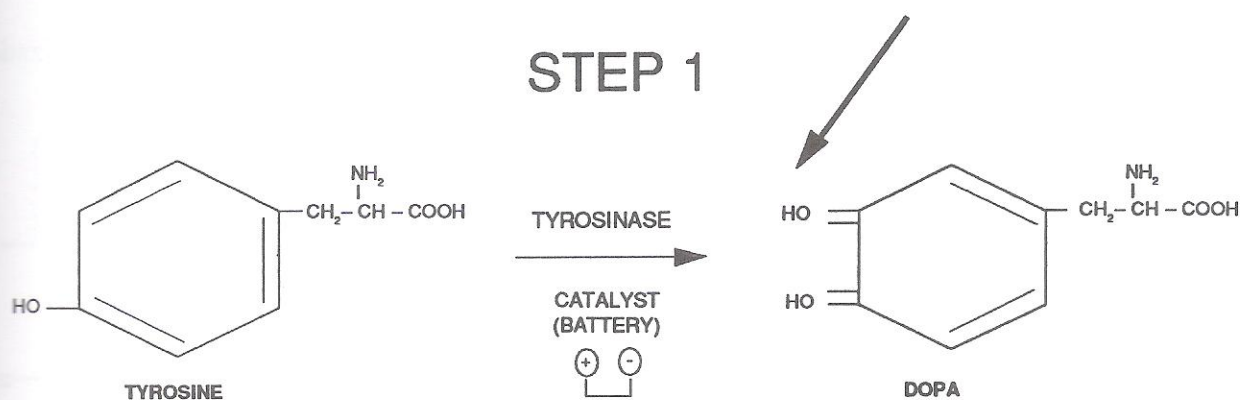
**FREE RADICAL PRODUCTION IN EDIPERMAL PROTEIN (SKIN)
BY ULTRAVIOLET IRRADIATION***



*Pathak, M.A. Chapter 25: Photobiology of Melanogenesis
Biophysical Aspects In Advances In Biology of Skin. Montagna, U.,
and Hu, F., eds New York, Pergamon Press Inc., 1967, Vol. 8, P. 397.

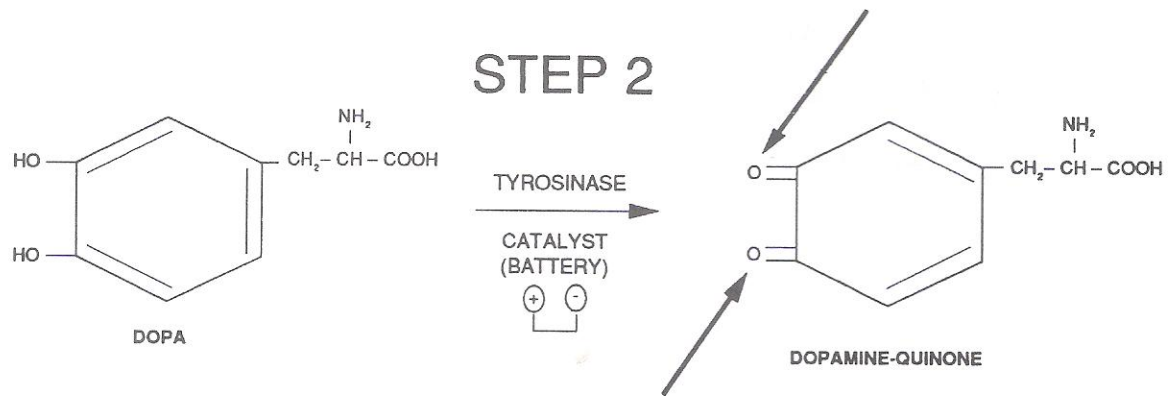
MELANIN PRODUCTION IN THE SKIN

The chemical reactions that lead to MELANIN production in the skin (integumental MELANIN) are outlined below (2). If the body uses the amino acid tyrosine as the starting material to manufacture MELANIN, the mechanism may proceed:

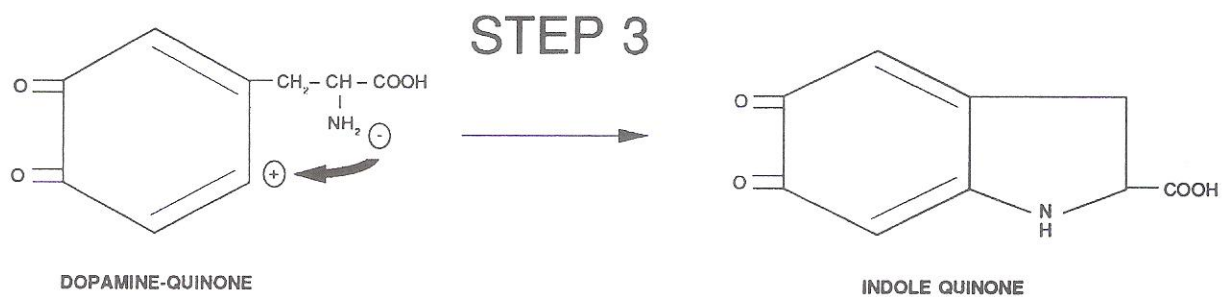


In Step 1, a single hydroxyl group (OH) was added to the benzene portion of tyrosine (5-hydroxyphenylalanine) to produce DOPA (5,6-dihydroxyphenylalanine). See arrow over DOPA in Step 1. The extra hydroxyl group increases the polarity of the structure and may allow DOPA to permeate membranes and tissues that could not be permeated by tyrosine. This step is significant in that it produces a substance (DOPA) from which a quinone can be produced. Quinones are important chemicals for MELANIN production and they must be produced to insure that MELANIN is manufactured (2,8,10).

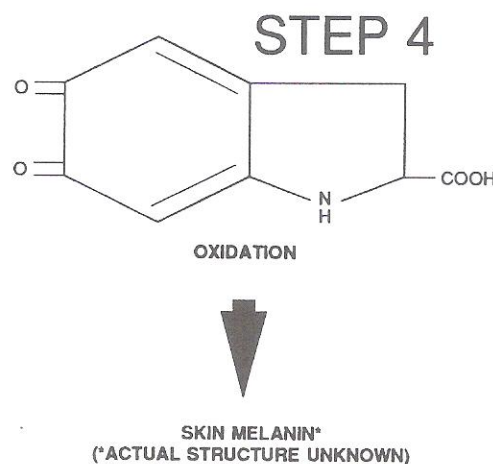
In Step 2, DOPA is converted to DOPA QUINONE again utilizing the tyrosinase catalyst. Notice the two oxygen atoms (O), do not have the hydrogen (H) atoms attached. See arrows over DOPA Quinone in Step 2. They were removed by the action of the tyrosinase catalyst (battery). This step in the reaction is called dehydrogenation!



In Step 3, the amino acid (amino propionic acid) portion of DOPA quinone undergoes cyclization to produce Indole 5, 6-Quinone.

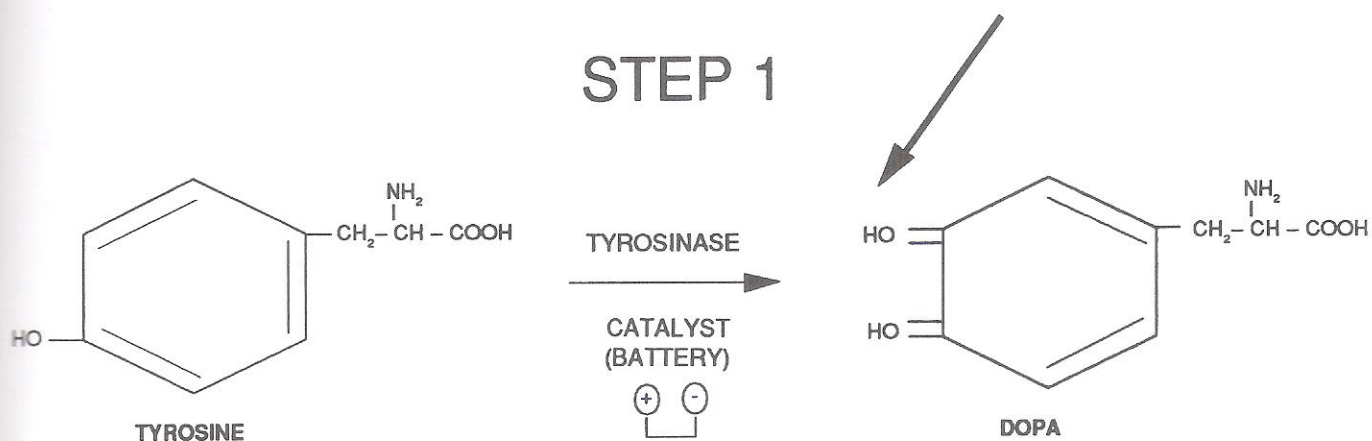


Once the indole quinone is formed, the action of oxygen (oxidation) causes the species to polymerize into MELANIN which is deposited in the skin. This is outlined in Step 4.



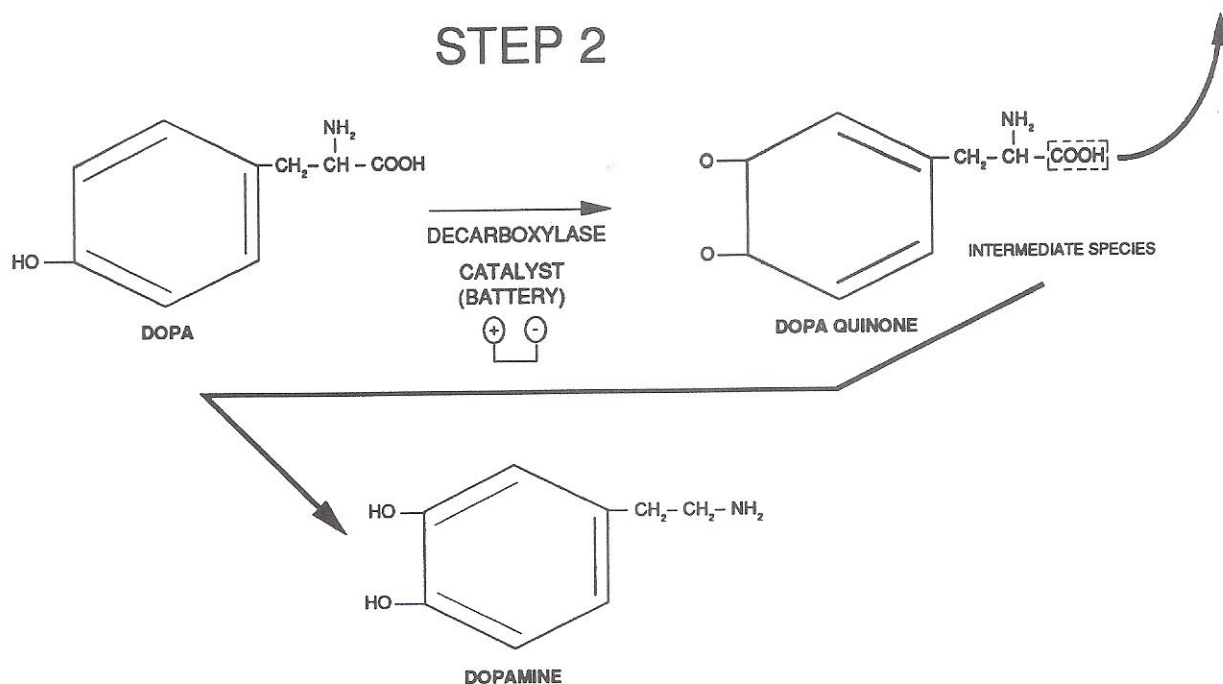
MELANIN PRODUCTION IN INTERNAL ORGANS

The chemical reaction that leads to MELANIN production in internal organs is outlined below. MELANIN in internal organs is usually called Visceral (Neuro) MELANIN. If the body uses the amino acid tyrosine as the starting material to manufacture Neuro-MELANIN, the mechanism may proceed:

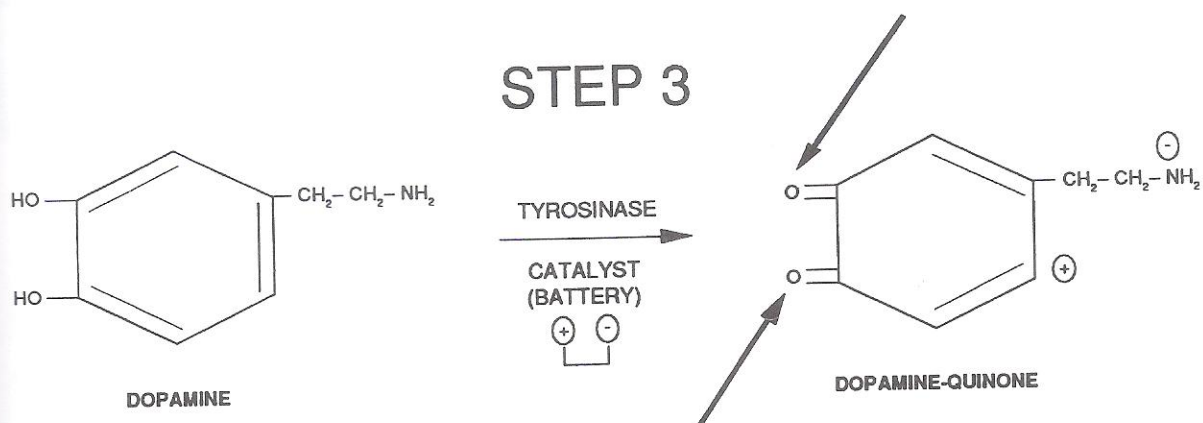


In Step 1, a single hydroxyl group (OH) was added to the benzene portion of tyrosine (5-hydroxylphenylalanine) to produce DOPA (5,6-dihydroxylphenylalanine). See arrow over DOPA in Step 1. This step is identical to Step 1 in the production of skin MELANIN outlined earlier. Once DOPA is formed, the MELANIN tissue must make a decision whether to prepare skin MELANIN or Neuro-MELANIN. This is the pivotal point! If the *tyrosinase catalyst* acts upon DOPA, skin MELANIN is produced; if the *DOPA decarboxylase catalyst* (battery) acts upon DOPA, Neuro-MELANIN is produced. I will now continue my explanation of Neuro-MELANIN manufacture by the action of DOPA decarboxylase catalyst on DOPA in Step 2 below:

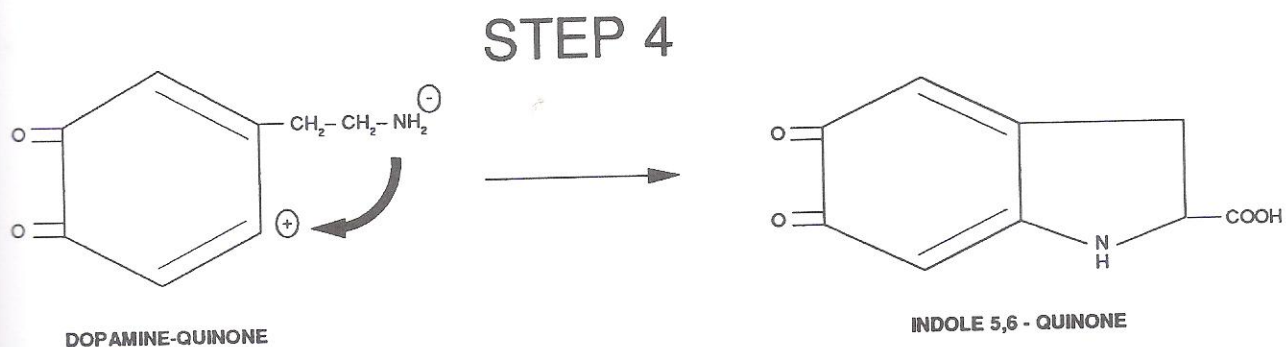
In Step 2, if DOPA is manufactured and present in brain cells and in areas such as the substantia nigra, lipofuscin or mitochondria, etc., it will undergo a reaction called decarboxylation. Decarboxylation is the removal of a carboxylic acid group (COOH) from DOPA. (See Intermediate below with the COOH group outlined in the box with the broken lines.) The arrow indicates this group is removed from the DOPA structure. The product formed from this chemical reaction is dopamine (5,6-dihydroxyphenyl-ethyleneamine).



In Step 3 below, dopamine may be converted to dopamine-quinone probably utilizing the tyrosinase catalyst. Notice again that the two oxygen atoms (O) on the dopamine-quinone structure do not have the hydrogen (H) attached as they were on the dopamine structure. (See arrows over dopamine-quinone.) Always remember that the formation of quinones in Step 3 is an important step in MELANIN production. The ability to remove these hydrogen (H) atoms by catalytic action is very important in the manufacturing of MELANIN. These are very important chemical reactions that ensure MELANIN production and continuing good health. These reactions are great parameters which we as BLACKS tend to "take for granted".

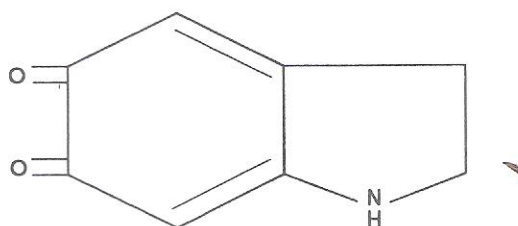


In Step 4, dopamine-quinone undergoes internal cyclization. (See arrow.) This is probably caused by the basic nature (negative charge (-) of the amine group (NH₂) and the increased electromagnetic properties of the benzene ring due to its quinone configuration caused by the electronegative oxygen. The electrons are shifted in the direction of the quinone oxygen. This electron withdrawing effect will cause the basic nitrogen to share its electron. Once internal cyclization is complete, the product produced is Indole 5,6-quinone. This step is similar to Step 3 in the production of skin MELANIN.



In Step 5 below, Indole 5,6-quinone polymerizes into MELANIN through its reaction with oxygen (oxidation) and/or catalyst source.

Furthermore, in Step 3 above (depending on the organs containing dopamine) dopamine may proceed through steps involving norepinephrine and epinephrine and eventually polymerizing into Neuro-MELANIN.



INDOLE 5,6 - QUINONE



NEURO-MELANIN

To summarize, MELANIN is produced by MELANOSOMES located within highly specialized cells called MELANOCYTES. The amount or quantity of MELANIN produced is controlled by a battery-like chemical or catalyst called tyrosinase, peroxidase/or Melanin-copper complex.

The activity of tyrosinase, etc. determines if an individual will be an albino (white race) or have significant quantities of MELANIN (BLACK RACE) for proper body function.

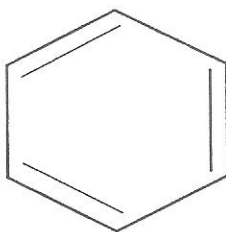
Amino acids, indoleamines and catecholamines/derivatives all polymerize into MELANIN or Neuro-MELANIN for deposition in skin and other external organs as well as internal organs such as the brain, heart, sexual organs, etc. (See Figure 3.)

WHAT IS KNOWN ABOUT MELANIN?

Because of the stable nature of the MELANIN molecule, it is difficult to study and to determine its traits and characteristics (1,2). Nevertheless, western scientists have persisted in their efforts to understand the nature and properties of MELANIN. As a result of their undying determination to acquire traits like the BLACK HUMAN, they are studying the chemical MELANIN to learn about its secrets. MELANIN has a number of interesting properties that are already known to the scientific community. Some of these properties are discussed in this Section.

MELANIN can become toxic to the BLACK HUMAN because it combines with harmful drugs such as cocaine, amphetamines, psycholic hallucinogens, neuroleptics (tranquilizers), marijuana, "agent orange" (dioxane), paraquats, tetracyclines, etc. To help prevent DEATH, these and other harmful drugs should be removed from the environment of the BLACK HUMAN. Furthermore, MELANIN shows extreme affinity for binding with aromatic and lipid-type compounds. What are aromatic and lipid compounds?

An aromatic compound always contains the benzene species as part of its total structure. Benzene is a major component in unleaded gasolines. (See benzene structure below.)

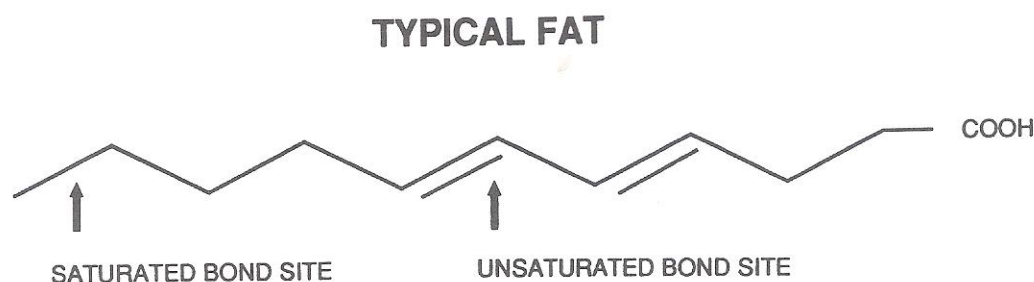


BENZENE

Lipid compounds are fat compounds and are usually called fatty acids. They are normally used in the home as animal or vegetable oil for frying and/or cooking foods. Examples of fatty acids are:

- *Cisco Shortening*
- *Wesson Oil*
- *Sunflower Seed Oil*
- *Corn Oil*

The chemical structure of fatty acids may be saturated (containing no double bonds) or unsaturated (containing double bonds) or a mixture of both bond types.



Fatty acids cause arteriosclerosis or "hardening of the arteries" by reacting with the arterial walls.

Now, to continue outlining the known properties of MELANIN....

- *MELANIN is a very old chemical and has been involved in life processes for eons (7)*
- *MELANIN is composed of varying amounts of different smaller chemical species such as tyrosine, tryptophan, melatonin, and serotonin.*
- *MELANIN can show various types of electrical charges and bonding properties such as ionic, metallic, covalent, hydrogen and Van Der waal type bonding. These electric charges set up by various bonds and functional groups are responsible for all of the chemical reactions MELANIN is capable of undergoing.*
- *MELANIN responds to and absorbs light, sound (music) and electrical energy and uses this energy in the body as food (1).*

-
- *MELANIN can convert light energy to sound energy (music) and back again to light energy (1).*
 - *MELANIN is an extremely stable chemical and resists most experimental analysis designed by man (1,2,17).*
 - *MELANIN is centrally involved in controlling all MENTAL and physical body activities (1,18,19,20).*
 - *MELANIN has shown semi-conductive properties outside the body. This means that it behaves like a conductor sometimes and may conduct electricity. It also behaves like an insulator in that it will not allow electrical current to pass through its structure similar to rubber and plastic insulators (21,22).*
 - *MELANIN can bind and release most known elements . This includes elements like calcium, iron, zinc, potassium, sodium, etc., which are essential for proper body metabolism (1,23).*
 - *MELANIN is present at the site of tissue repair, regeneration (cuts/wounds) and infectious diseases (1,2).*
 - *MELANIN in the brain increases from the lower primates and reaches its highest level in the BLACK HUMAN (24).*
 - *MELANIN is capable of undergoing many chemical reactions at once through what scientists call oxidation-education reactions. These reactions may give the BLACK HUMAN his smooth movements and rhythm. This eliminates the robotic effect (associated with "whites") and is responsible for the multirhythmic music and dancing associated with the BLACK HUMAN (25,26).*
 - *MELANIN can produce or neutralize radiation or free radicals. Sometimes the body needs energy to carry on additional body metabolism. Free radicals also provide this energy to keep the body healthy/functional (2,26).*

- *MELANIN in the iris of the eye is directly related to an individual's reaction time or quickness of movement (27).*
- *MELANIN is present very early in the ectoderm of the human fetus and is centrally responsible for the development of the BLACK HUMAN. Lack of MELANIN or a reduced level of MELANIN in the ectoderm causes the mother to lose the baby or, as in the case of all whites", a defective species is produced because of low MELANIN levels in the "white" mother (28).*
- *MELANIN is found in high concentrations in the skin of "mummies" from Ethiopia and Egypt. This proves without a doubt that the ancient Egyptians were BLACK people and not white as taught by western society today (29)!*

WHAT IS THE POTENTIAL OF MELANIN?

An organic chemist with a good knowledge of chemistry, biochemistry, electricity and magnetism, physics, metaphysics, organic chemical reactions/mechanism, biological life functions and social systems can evaluate the MELANIN structure visually and predict:

- *Many possible chemical reactions*
- *Chemical characteristics/traits*
- *Conditions/actions, social, cultural and behavior patterns*
- *Toxicity/odor/color*

and many other parameters even before going into the lab to run experiments or by utilizing existing lab data. MELANIN'S Chemical structure also allows us to make proposals and predictions as to its potential capabilities. MELANIN'S potential capabilities are discussed in this Section:

- *MELANIN can organize itself and other chemicals and show the potential to reproduce itself. This means that if a condition occurs where the ability to produce MELANIN is altered or reduced, MELANIN can take over, activate and control mechanisms that are inactive to continue its production in the body.*
- *MELANIN can cause altered states of consciousness such as those experienced in BLACK religious ceremonies ("shouting", "falling out", or "speaking in tongues"); "improvisation", or creation of "jazz", "high five", "spiking the football and dancing in the end zone" and "telepathic communication." (9,21)*
- *MELANIN granules are "Central Computers" and may analyze and initiate body responses and reactions without reporting to the brain.*
- *MELANIN'S ability to absorb light, sound (music) and magnetism causes the BLACK HUMAN to show physical, mental, and chemical abilities or to behave culturally and socially like light, sound (music) and magnetism.*

- *MELANIN is centrally involved toward keeping the BLACK HUMAN CONSCIOUS and AWARE (MIND)!*
- *MELANIN is responsible for the existence of civilization, philosophy, religion, truth, justice, and righteousness.*
- *MELANIN is a civilizing chemical and acts as a sedative to help keep the BLACK HUMAN calm, relaxed, caring, and civilized!*
- *Individuals (whites) containing low levels of MELANIN will behave in a barbaric manner (or create a society not conducive to Blackness).*
- *MELANIN can conduct electricity without offering any resistance to the flow of electricity. This is called super conduction.*
- *People containing high levels of MELANIN or a high number of pigmented centers, such as the BLACK HUMAN, will always show a positive test for the use of marijuana. The chemical species found in the urine which indicates someone's use of marijuana is also found in the urine of BLACK HUMANS. These levels are always higher for BLACKS than whites. This may also be true for cocaine, amphetamines and tranquilizers.*
- *MELANIN regulates all signals from the external environment of the cell deep into the cell's inner structure where information is processed and a response or action is delivered back to the external environment.*

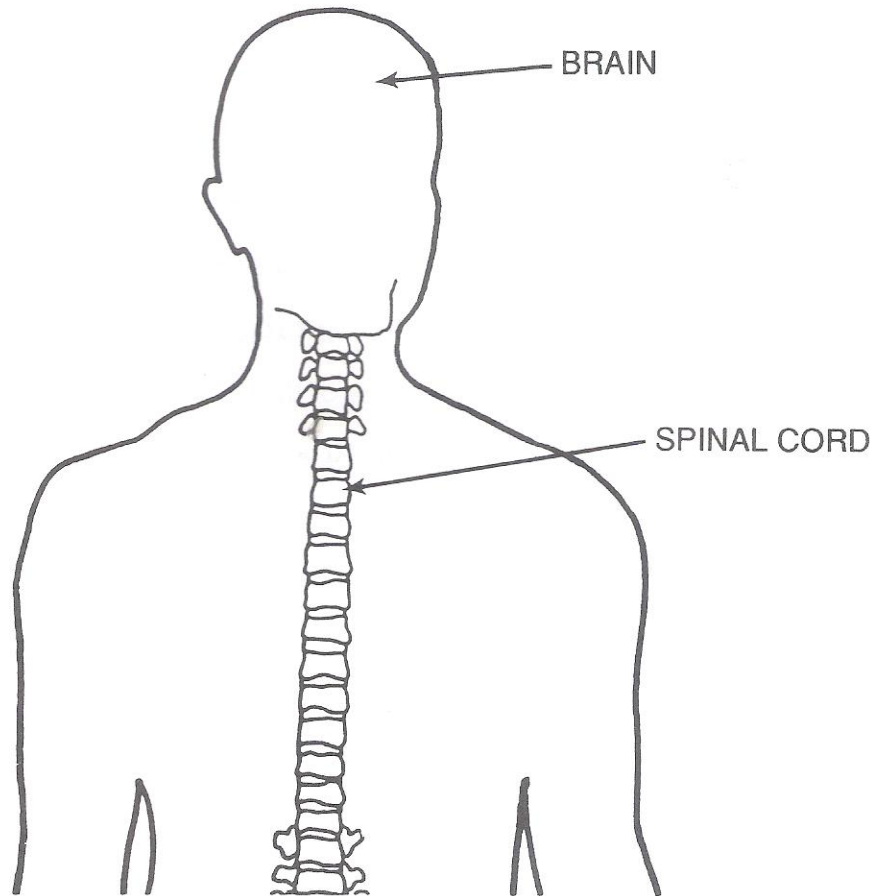
As more information becomes available, many of the *potentials* cited above may be proven to be true. The structure of MELANIN strongly suggests such *potentials* may be very real!!!

MAJOR ORGANS IN THE BLACK HUMAN THAT CONTAIN HIGH CONCENTRATIONS OF MELANIN

Everything exists in nature due to a certain controlling factor. The ability of a species to exist comfortably, healthy, and maintain a certain longevity before death depends on how well nature has prepared and adapted the species to its environment. In the case of the BLACK HUMAN, nature has been very rewarding. The rewards have been given to the BLACK HUMAN in the form of the refined chemical MELANIN located in important areas of the body and surrounding environment. Because of the many attributes that MELANIN has, the BLACK HUMAN is able to experience his world at a constantly "higher energy state" than what is experienced by non-black humans. This means that the entire society of BLACKS will be shaped and experienced from a different perspective. In other words BLACK people shaping BLACK culture will organize a society that is different from one designed by white people.

In this Section, I have outlined schematically the location of highly MELANIZED organs in the body of the BLACK HUMAN. Please review all and let it become permanently entrenched in your mind that MELANIN exists in important areas of the body other than your skin. These highly MELANIZED organs and sites work together in a computer fashion to ensure that the BLACK HUMAN experiences the epitome of "life" (Creatively, Culturally, Socially, Spiritually, and Cosmically).

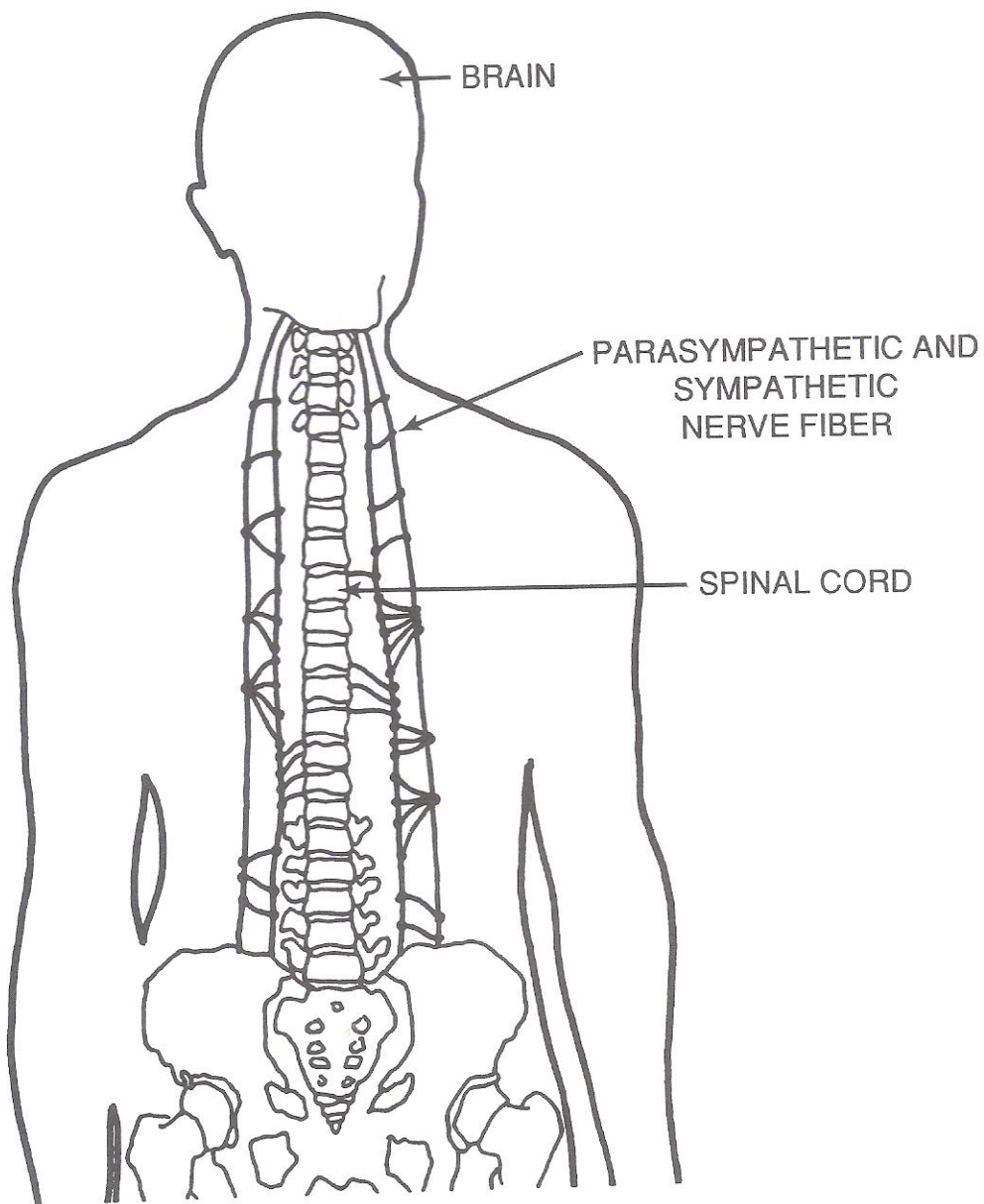
FIGURE 7



CENTRAL NERVOUS SYSTEM - This includes the brain and spinal cord which is a soft column of nerve tissue enclosed within the bones of the spine. Areas in the brain/spinal cord where MELANIN is found are:

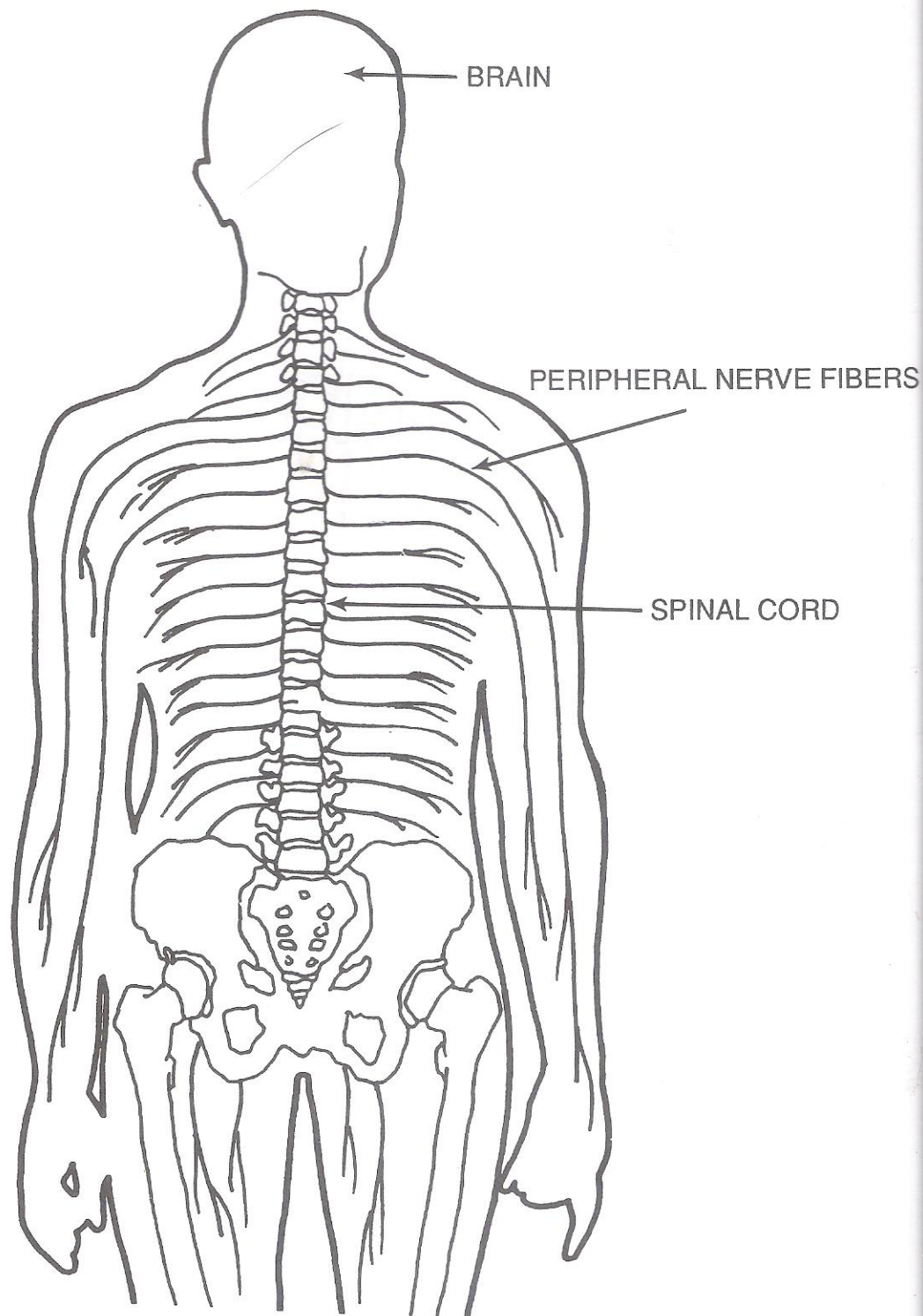
- *SUBSTANTIA NIGRA*
- *MIDBRAIN RETICULAR FORMATION*
- *VENTRAL TEGMENTAL AREA*
- *PONTINE RETICULAR FORMATION*
- *LOCUS COERALEUS*
- *GLIAL CELLS, etc. (1,2,30,31)*

FIGURE 8



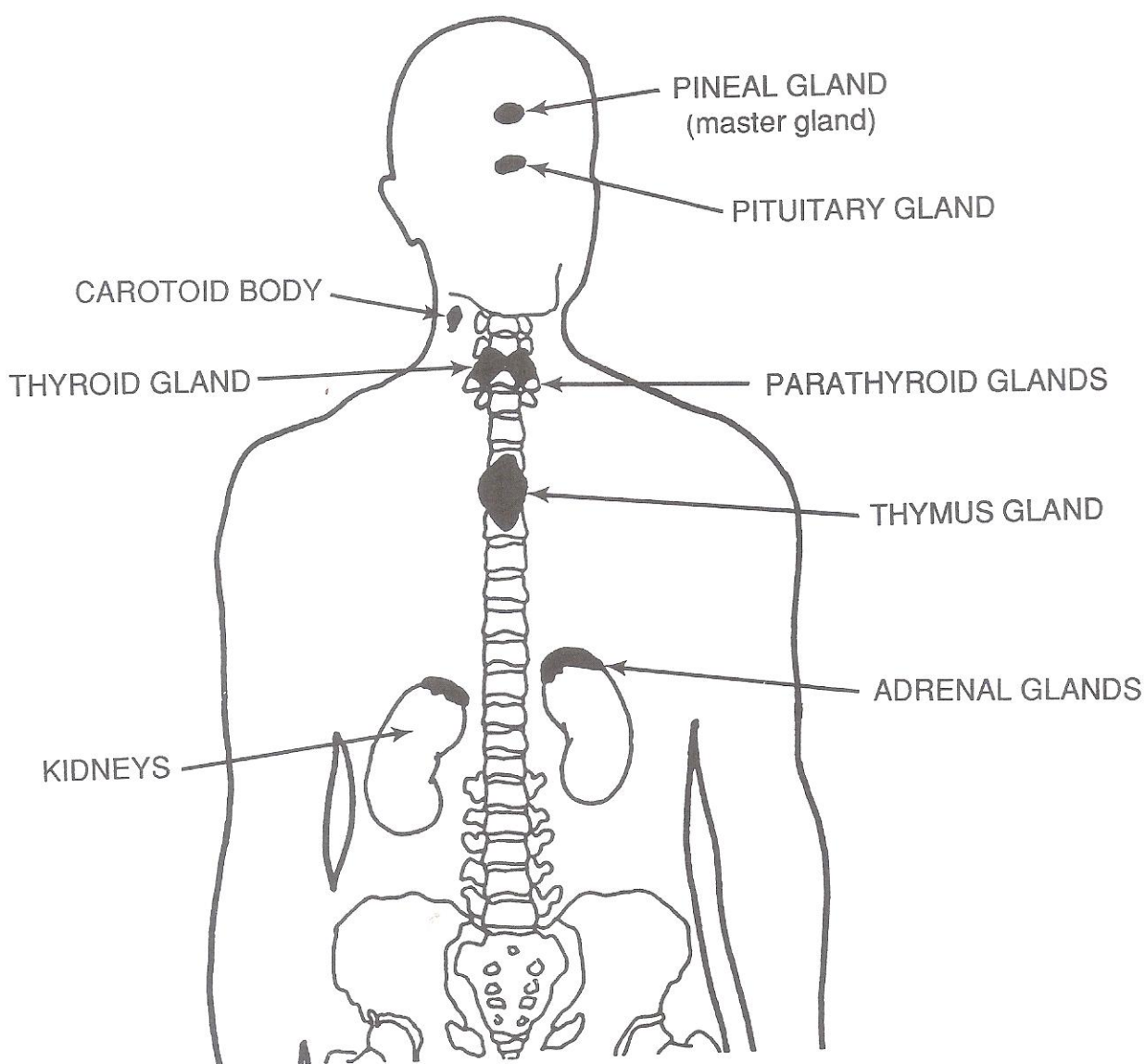
*AUTONOMIC (AUTOMATIC) NERVOUS SYSTEM -This system regulates "auto-
matically" the smooth muscles and secretory cells of the torasic and abdominal cavities
(Viscera) including the muscles of the heart. In other words, the autonomic nervous
system regulates breathing, heart action and the movement of the intestines (1,2) (See
Figure 8.)*

FIGURE 9



PERIPHERAL (EXTERNAL OR SURFACE) NERVOUS SYSTEM - *This system connects the central nervous system with the various tissues throughout the body (1,2).*

FIGURE 10



DIFFUSE NEUROENDOCRINE SYSTEM - *The Neuro-endocrine system includes major glands which are responsible for manufacturing and secreting various chemicals into the blood stream. These chemicals communicate with cells and the nervous system to help adjust the body to internal and external environmental messages (1,2).*

MELANIN is also found in major organs (1,2,31) such as:

- HEART
- LIVER
- GASTROINTESTINAL TRACT
- ARTERIES
- SKIN
- EYES
- AUDITORY NERVES OF THE INNER EAR
- TESTES
- EPIDIDYMIS
- OVARIES

(See Figures 11 through 15.)

FIGURE 11

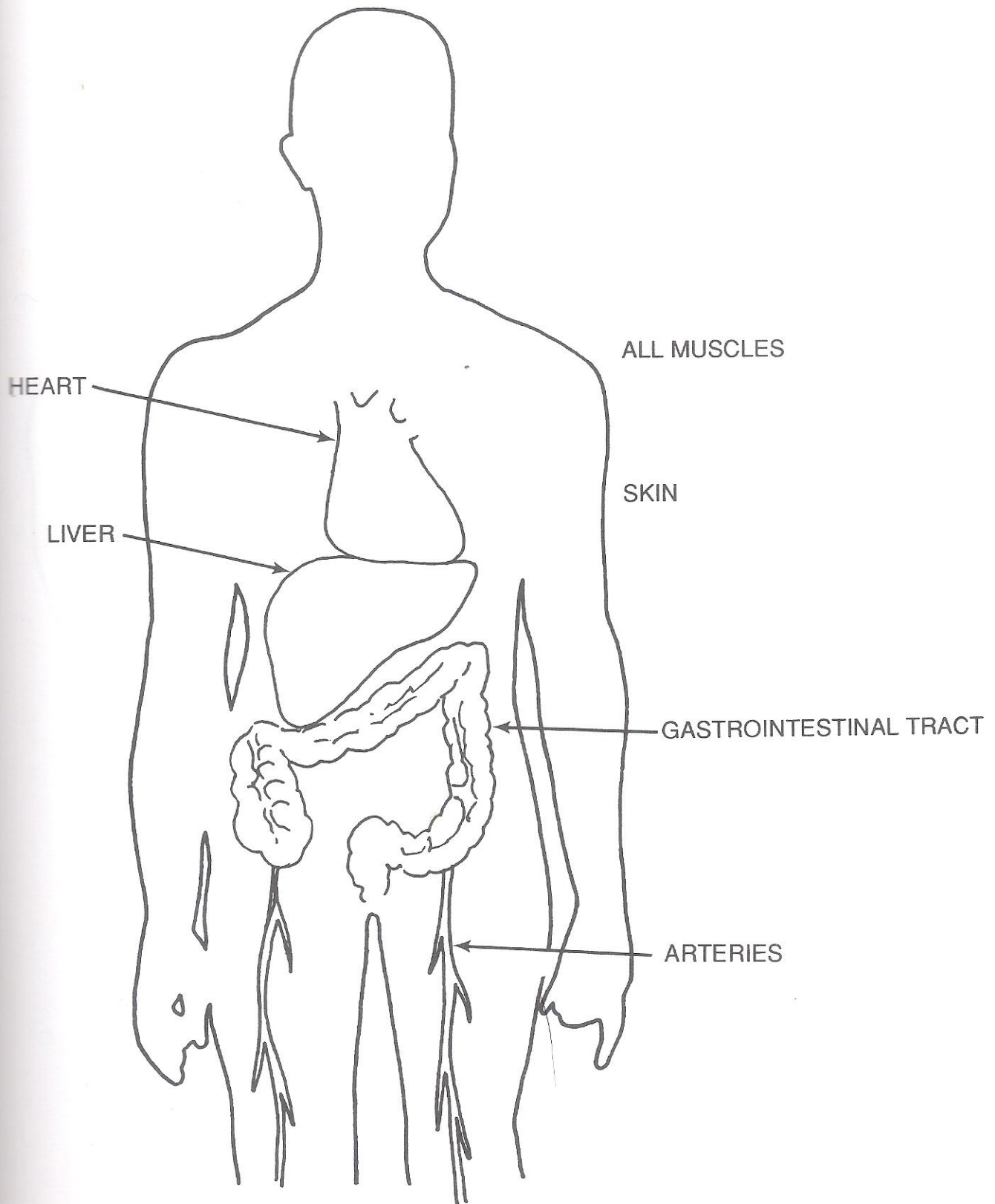


FIGURE 12

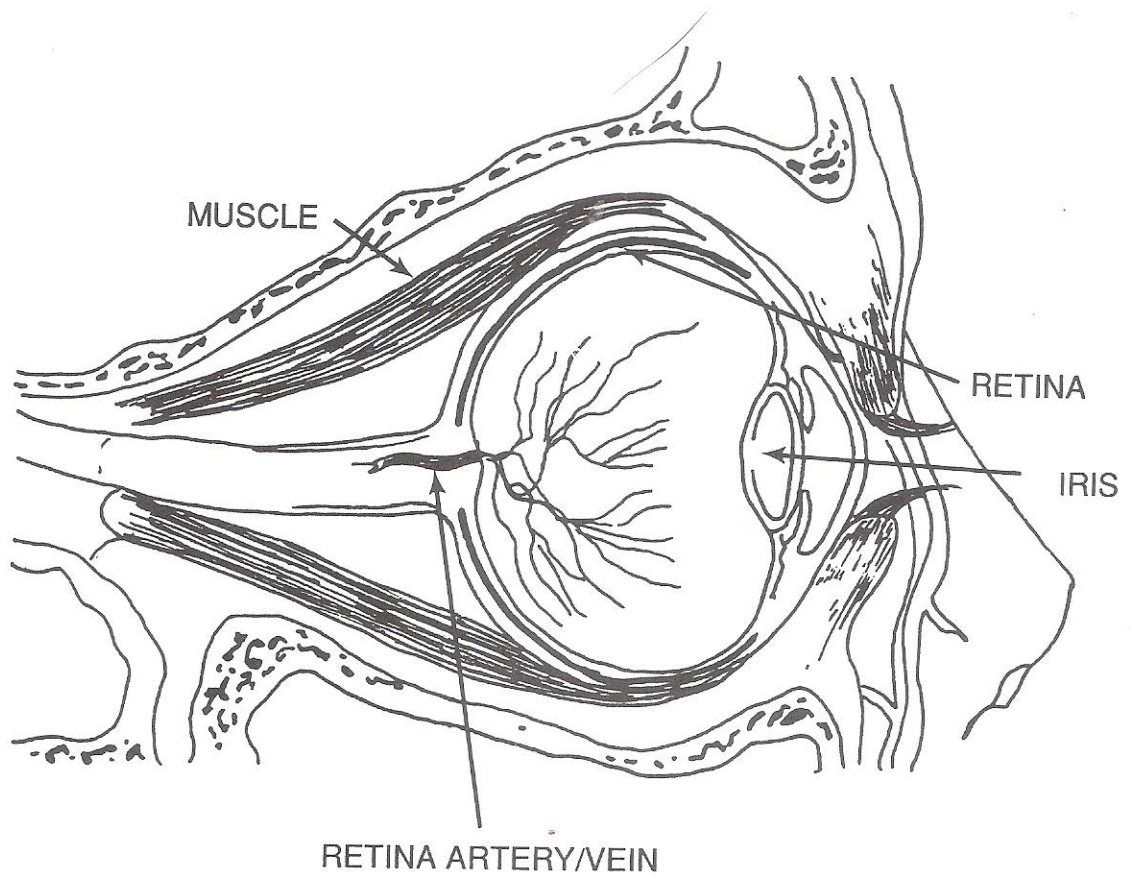


FIGURE 13

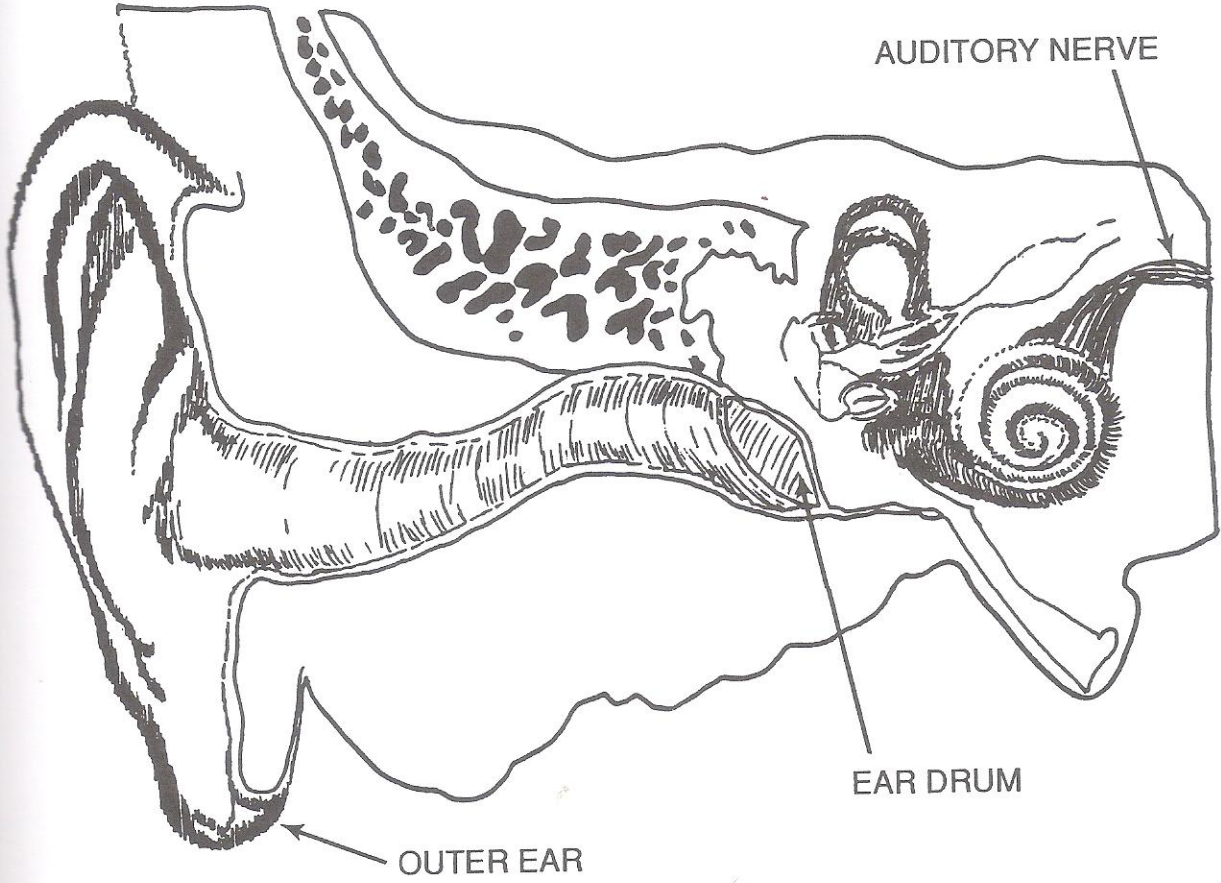


FIGURE 14

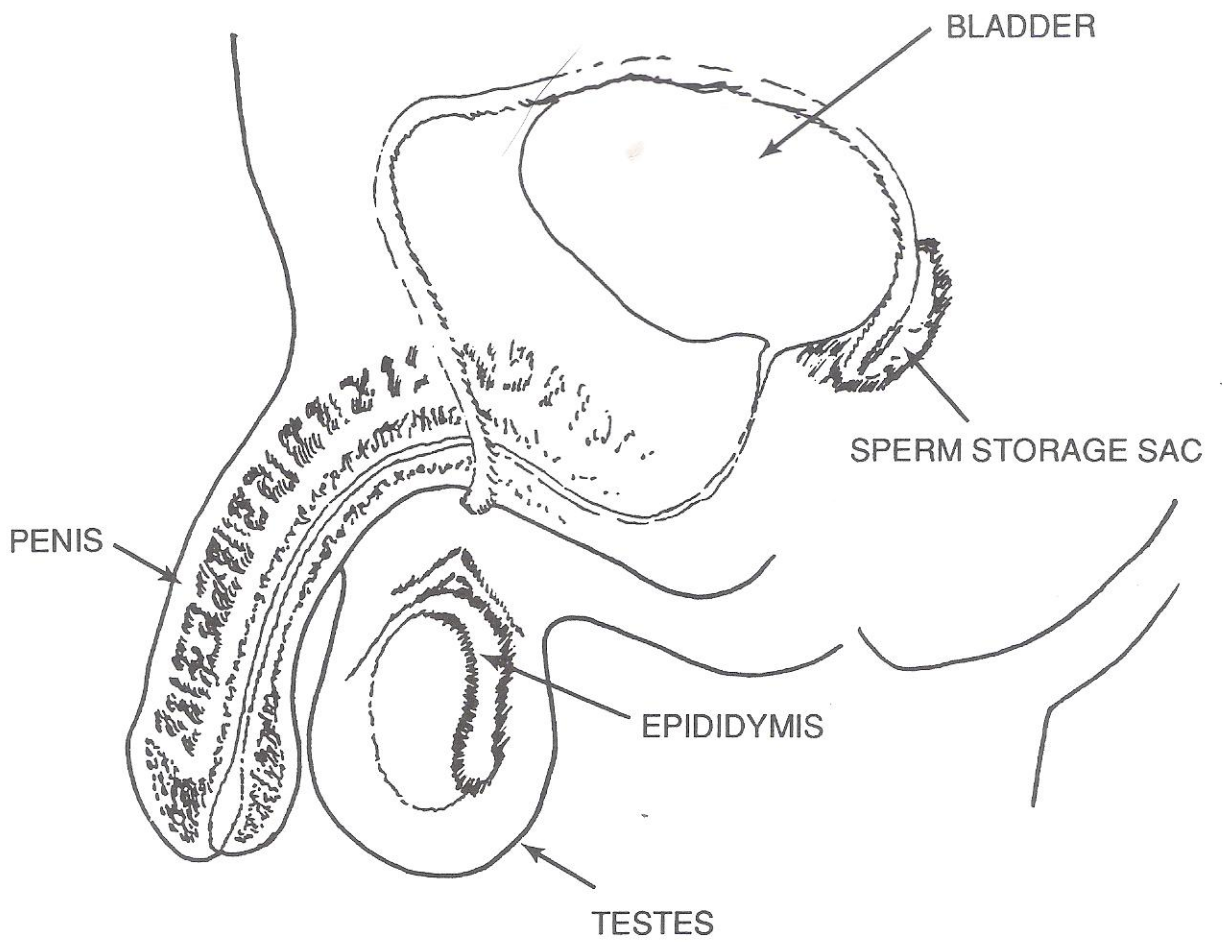
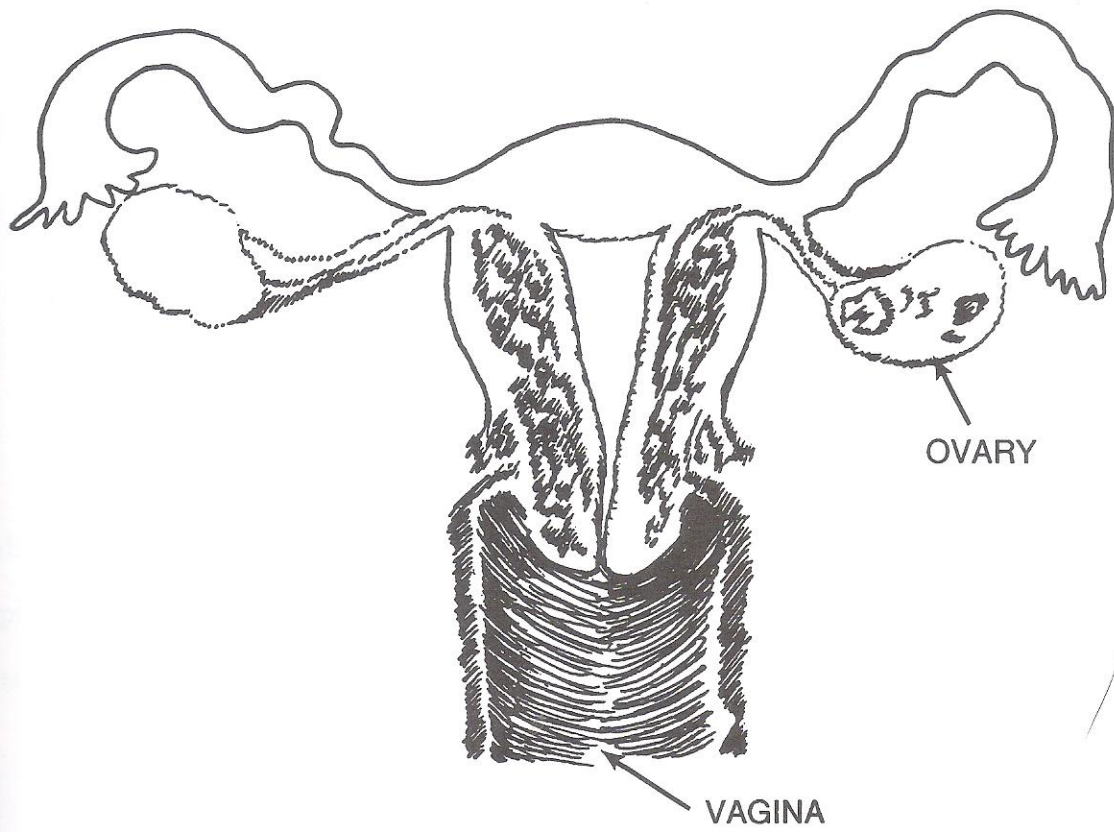


FIGURE 15



MELANIN is also found in the interior of most cells (1,2) within the body of the BLACK HUMAN in areas such as:

- ORGANIZATIONAL VESICLES

MITOCHONDRIA

LYSOSOMES

MELANOSOMES

PEROXISOMES

COATED VESICLES

SECRETORY VESICLES

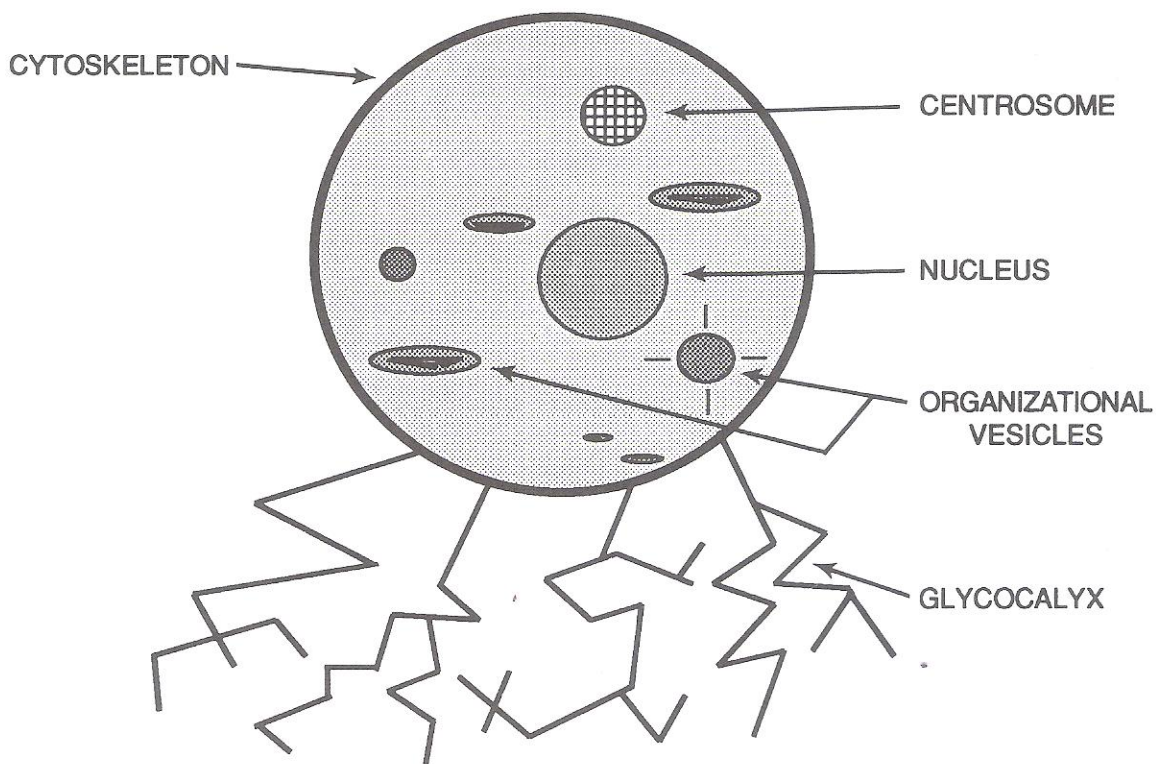
- CENTROSOME

- CYTOSKELETON

- GLYCOCALYX

- NUCLEUS

HUMAN CELL



CONDITIONS, ACTIONS, TRAITS CONTROLLED BY MELANIN AND MELANIN CENTERS

What makes BLACK CULTURE? Why do BLACK HUMANS express themselves uniquely and differently from the non-BLACK human species? Why do we.....

- DANCE
- SING
- DRESS
- WALK/RUN
- COOK
- LAUGH/CRY
- PLAY THE GAME OF FOOTBALL/BASKETBALL
- THINK
- WORK, ETC.....

differently from other races? If you compare BLACK CULTURES around the world, you will become pleasantly aware that BLACK HUMANS are not different! From one end of the globe to the other end of the globe, you will find that BLACK HUMANS are:

- EXPRESSIVE
- COLORFUL
- CREATIVE
- INDUSTRIOUS
- GENEROUS
- COCKY

....just like your neighbor across the street or across town! All "Industries" created and designed by the BLACK HUMAN (and from his culture) will be "RICH" in essence and depth! Even when the BLACK HUMAN is poor, the resources he has to work with may be limited, but the product that he produces will be well prepared and EXPRESSIVE!

The driving force behind this trait in the BLACK HUMAN is the chemical MELANIN!

Why? MELANIN is essentially perfect for "NATURE'S WORK" and it is highly accessorized! Let me explain! When an individual goes out to purchase a car, he looks for and tries to acquire as many accessories (extras) as his budget can afford. These accessories tend to make driving the new car more enjoyable and adds to the individual's prestige.

In chemistry, chemical molecules also have accessories. These accessories are called FUNCTIONAL GROUPS. A chemical can do more work in the form of chemical reactivity and has higher physical integrity as the number and configuration of functional groups increase on a chemical molecule.

Examples of FUNCTIONAL GROUPS are:

- | | |
|----------------------|---------------------|
| - Carboxylic acid | (RCOOH) |
| - Hydroxyl (alcohol) | (OH) |
| - Ether | (ROR) |
| - Ester | (RCOOR) |
| - Amino | (RNH ₂) |
| - Phenolic | (AROH) |
| - Aldehyde | (RCHO) |

These are but a few of the many FUNCTIONAL GROUPS in Organic Chemistry. Each functional group listed above has a different personality/character from the rest in the group. It's electron cloud or battery is different due to its charge state. This means that it will undergo chemical reactions that are also different.

MELANIN molecules contain many different functional groups. (See Figure 1.) These various functional groups undergo many chemical reactions at the same time. These chemical reactions show themselves in the highly expressive culture produced by the BLACK HUMAN. Also, MELANIN is located in various functional centers in the body. These centers being saturated with MELANIN cause the BLACK HUMAN to demonstrate a character that is uniquely BLACK. BLACK HUMANS around the globe generally have the same MELANIN sites pigmented within their bodies. Therefore, all environmental (cosmic) influences experienced by one BLACK HUMAN will be experienced by the entire population of BLACK HUMANS (32).

Environmental factors cause certain chemical reactions to take place in the body that are universally similar among BLACK HUMANS. When the reaction takes place, we create similar things! If the earth's magnetic field changes, all BLACK HUMANS will feel the change! It doesn't matter if you live in the U.S., Africa, or Australia. The MELANIN within your body will respond to the change in the earth's magnetic field and cause the BLACK HUMAN to respond mentally, physically, culturally and socially (33,34). This is just one example! I could go on and on but time and the shortness of this report do not permit me to do so.

Examples of conditions, that show MELANIN at work for us daily are:

- *MEMORY/MEMORY RETRIEVAL*
- *INTUITION*
- *MOTIVATION*
- *MOVEMENT (motor output)*
- *SENSORY/INPUT*
- *FEELING SENSATIONS*
- *EMOTIONS*
- *UTILIZING EXTERNAL ENERGY SOURCES (light, sound)*
- *ANTI-CANCER*
- *HIGH MORALS*
- *HIGH SPIRITUALITY ("Shouting", "Speaking in Tongues")*
- *DREAMING*

In review we've learned that MELANIN is a sophisticated chemical that controls virtually every aspect of our lives. It is located in functional regions throughout the body as well as the environment (rivers, streams, lakes, soil, plants, and animals). It prevents major, as well as minor, diseases. WE ALSO SEE THE WORLD AND EXPERIENCE IT DIFFERENTLY DUE TO MELANIN'S SEDATIVE AND CIVILIZING EFFECTS. All of these wonderful attributes can be altered if MELANIN is exposed to improper environments. MELANIN then becomes toxic to the body.

ENERGY STATES/ELECTRON EXCITATION

In the natural (scientific) order of the universe, the earth, life, all elements try to achieve neutrality. This means all elements and systems want to be in a state of calm; relaxed and under no pressure, strain or stress. In other words "cool". In this "cool" but reactive state, systems and elements perform their respective duties. The entire cosmos follows this system of organization. For example, all rivers and streams like to flow from a higher elevation to a lower level where it is calm and at a state of equilibrium, under no pressure. At this state and even when it's trying to achieve this equilibrium, water continues to perform its natural duties towards supporting life systems in the seas, rivers and streams. Another example of this effect is when objects (baseballs, rocks, or pebbles) are thrown into space. The extreme apex of its travel may be referred to as the excited state of the object. From this excited state the object falls back to earth and comes to a state of relaxation or calm due to the opposite pull of gravity. It is easy for an individual to perceive these analogies because they are on a large scale and are seen every day in our natural surroundings. There is a smaller world (or worlds) that is not seen by the average lay person. This smaller world consists of the sub-atomic world of electron, protons, neutrons, plasmons, excitons, solitons (58), etc. This sub-atomic world, however, is not a stranger to scientific researchers, physicists, biochemists, etc. At this point in the development of "state of the art" equipment, researchers have the capability to investigate and understand some of the laws and parameters that these wave functions (electrons, protons, etc.) obey. This equipment allows man to expose himself to parameters that our five senses supposedly can't perceive.² These artificial senses in the form of scientific equipment allow us to experience these sub-atomic particles

²The PINEAL GLAND and MELANIN are believed, by this researcher, to be the sixth and seventh senses that allow the BLACK HUMAN to experience wave functions such as electron, solitons and other energy states without the help of artificial equipment (machinery). These senses are dormant in us because we do not have the knowledge to activate them. Our ancestors knew how to activate the MELANIN and pineal gland systems through the use of their science.

Scientific researchers have found that sub-atomic particles tend to behave in a similar fashion in obedience to the laws of the universe described in the analogies above. Electrons, solitons, etc., have preferred energy states in which they operate best for a particular function. This energy state is usually the ground; calm, relaxed (but not necessarily neutral) energy state.

TABLE 1
MOLECULAR ENERGY LEVELS

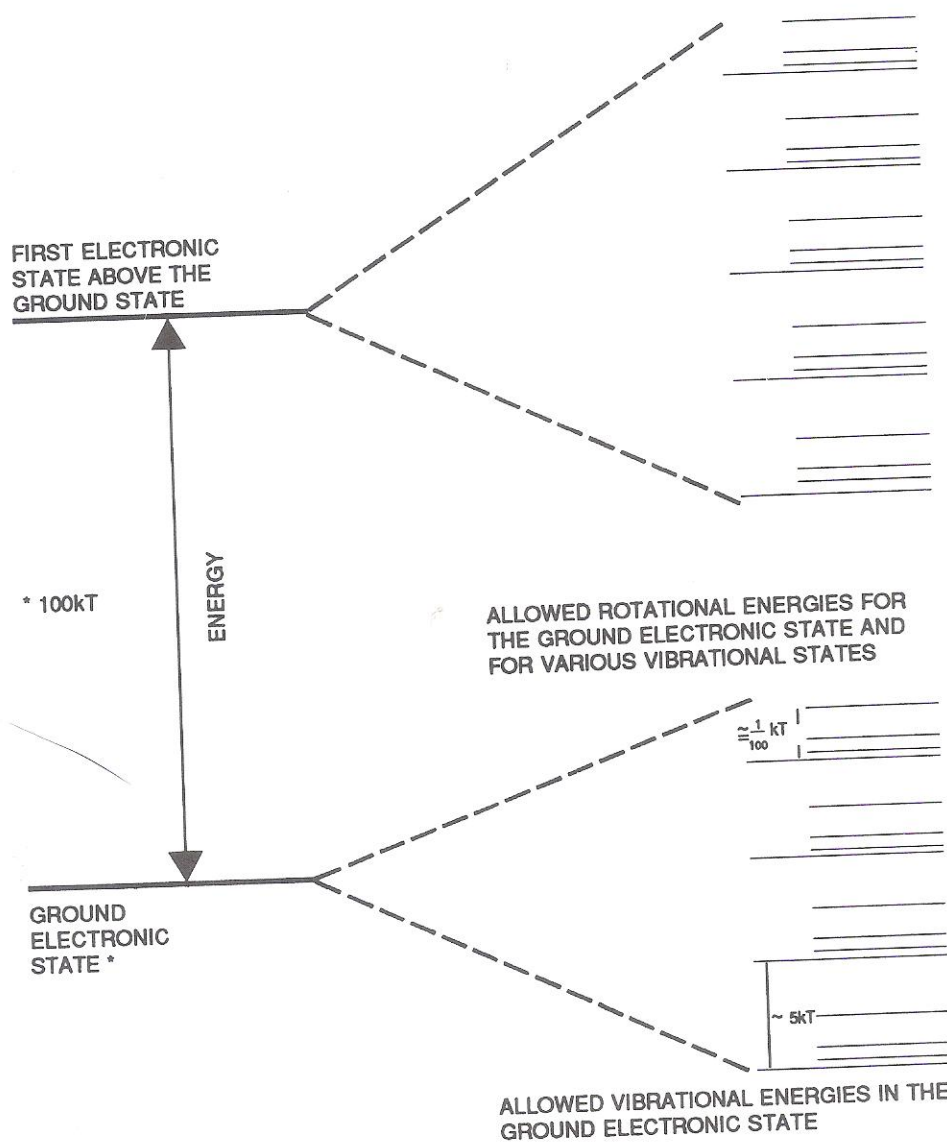
	Typical energy-level spacing	
	ergs/molecule	cal/mole
1. Electronic	10^{-11}	100,000
2. Vibrational	10^{-1}	1,000
3. Rotational	10	1
4. Translational	10^{-34}	10^{-18}

There are various types of energy states or levels that contain a precise amount of energy (53). Electrons, etc., in these energy states will not respond or move to another level unless they receive this energy. The various types of energy levels and the amount of energy that represent that level are outlined in Table 1. The smallest of these energy levels is the Translational level and it occupies or responds to the smallest input of energy. This means that electrons will become excited when exposed to 10^{-18} calories per mole or 10^{-34} energies (erg.) per molecule. This may correspond to low energy generators such as talking, dropping a book, patting your feet, etc. Higher amounts of energy are required to move electrons into the electronic state (100,000 calories per mole).

Excited states or reactivity ("Chaos") in a system is caused by the introduction of a quantum (unit) of energy into a molecular energy level. This quantum of energy moves electrons from the "ground state" to an excited energy state inside or outside a particular energy level. In the ground state there are Electronic, Vibrational, Rotational, and Translational energy levels. This is also true for excited states. A schematic of these various molecular energy levels is shown in Figure 16.

FIGURE 16

A SCHEMATIC REPRESENTATION OF TYPICAL MOLECULAR ENERGY LEVELS



* Translational – energy levels are too small and closely spaced to be represented practically in this schematic. However, they do exist and are a part of the system above.

When electrons are exposed to energy and raised to an excited energy state, they eventually must fall back to the ground state. Electrons have various ways of returning to the ground state. This is outlined in Figure 17. Electrons at an excited state may remain there for a period of time (performing useful or harmful duties) or fall to the ground state by way of internal conversion, vibrational relaxation or intersystem crossing which provides fluorescence, phosphorescence, and/or chemiluminescence (light). Electrons in the singlet and triplet excited energy states have been shown to be toxic to MELANATED systems. Slawinska states that , "The potential cytotoxicity of active oxygenated species such as H_2O_2 , O_2 , O_3 , and OH are substrates or products of chemiluminescent reaction coupled to the oxidation transformation of catecholamines and MELANINS. When they are formed *in vivo* (in the body) at or near the cell surface, many harmful effects like hemolysis, single strand breaks in DNA, chromosome damage, peroxidation of membrane lipids, injury to adrenergic receptor, etc. may occur" (35,54,55,56). (See Figure 18.) The avenue to go to excited states is not always harmful. In fact, nature designed these excited states in systems for useful chemical reactions to take place to produce useful life functions. It is important then, that we understand that MELANIN is not harmful to us if the natural chemical reactions are allowed to take place and its natural excited state is obtained. The increase in concentration of MELANIN in the Locus Coeruleus of the brain with the increase in age of the BLACK HUMAN, strongly suggests that MELANIN plays a vital role in the highly spiritual (excited state) nature of our "Elders" and their ability to communicate with our ancestors and experience various "excited energy states, Seeing," (57,58). Various chemicals or drugs as well as electromagnetic energy, rhythm patterns, etc., can cause excited energy states. Our ancestors were able to achieve "Seeing," or excited energy states by the use of chemicals (in the form of plant extracts) etc., in a natural and useful manner. These chemicals either worked as a result of ingestion or inhalation into the body to produce desired effects; or the ingested chemical activated a higher chemical reaction that in turn produced a higher chemical species that caused one to move into an "excited energy state". This is very possible in the body of the BLACK HUMAN namely through the pineal gland and the production of Melatonin. Melatonin (under the right conditions) is further converted to the B-carbolines (harmalines) and MELANINS (39,40). Chemical reactions such as these may cause "shouting," and "speaking-in-tongues," in Black religious ceremonies.

FIGURE 17

ENERGY DIAGRAM SHOWING ELECTRON EXCITATION AND RELAXATION AND THE EFFECTS PRODUCED

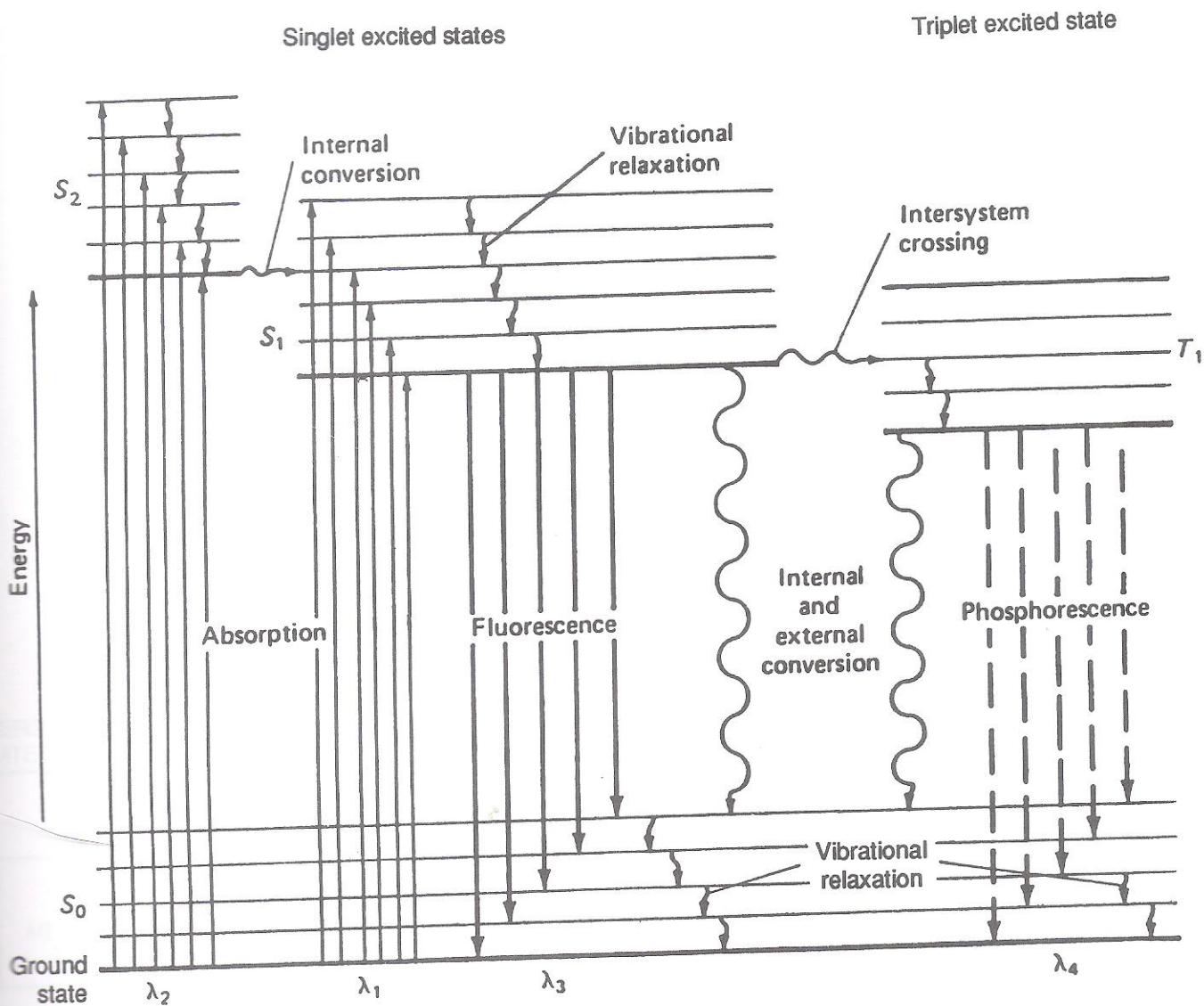
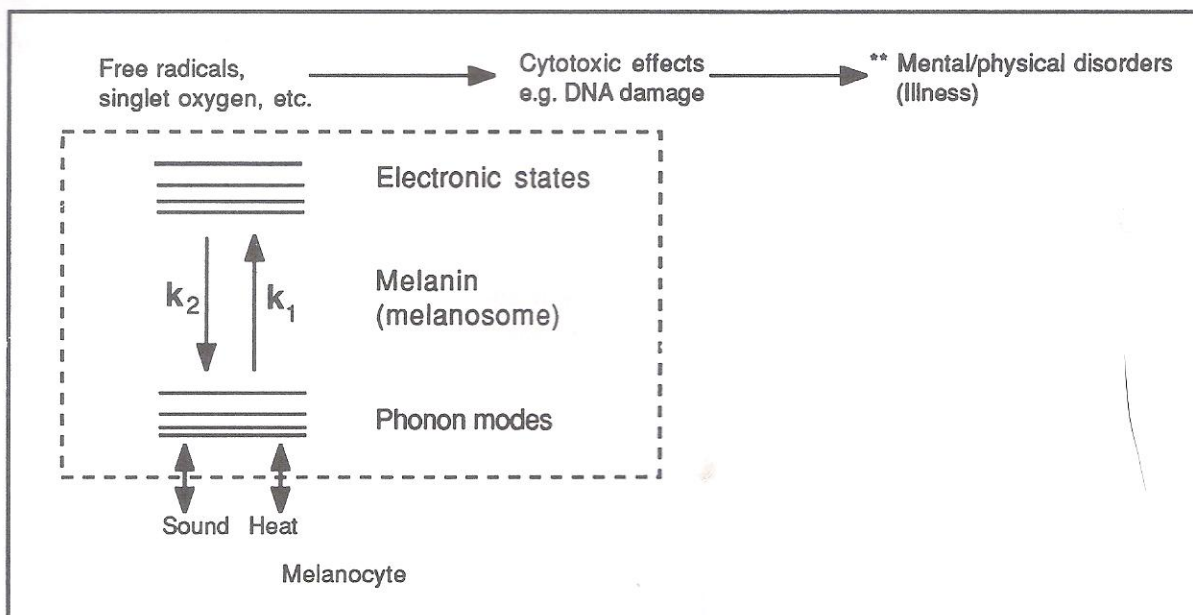


FIGURE 18



Extracted from Pigment Cell, Vol. 2, pp.321-326 (Karger Basel).
Work was done by Peter Corry, John McGinness and Elwood Armour (See Reference #40).

** This section added to schematic and proposed by author.

MELANINS produced from the B-carbolines may demonstrate different excited energy states and psychological effects than MELANINS produced from tyrosine, dopamine, etc. Music, dancing and changing color patterns also help to produce the desired energy state. (See Figure 19.) McGinness (21) states, "The MELANINS are capable of absorbing other chemical molecules (diethylene amine; DEA) and expressing this interaction by a change in conductivity (electrical charge) by as much as ten orders of magnitude." (See Figure 20.) This means that chemicals, drugs, etc., can cause electrons in MELANIN to be raised to excited energy states! The increase in the concentration of MELANIN in the locus coeruleus of the brain with age, and the ability of the pineal gland to become more active with age, as well as the ability of the pineal to produce B-carboline based MELANINS may be a large part of the key to the ability to "SEE,".

FIGURE 19

THE INFLUENCE OF CHEMICALS TO PRODUCE EXCITED ENERGY STATES AND THE ABILITY TO "SEE" IN ELDERLY BLACK HUMANS

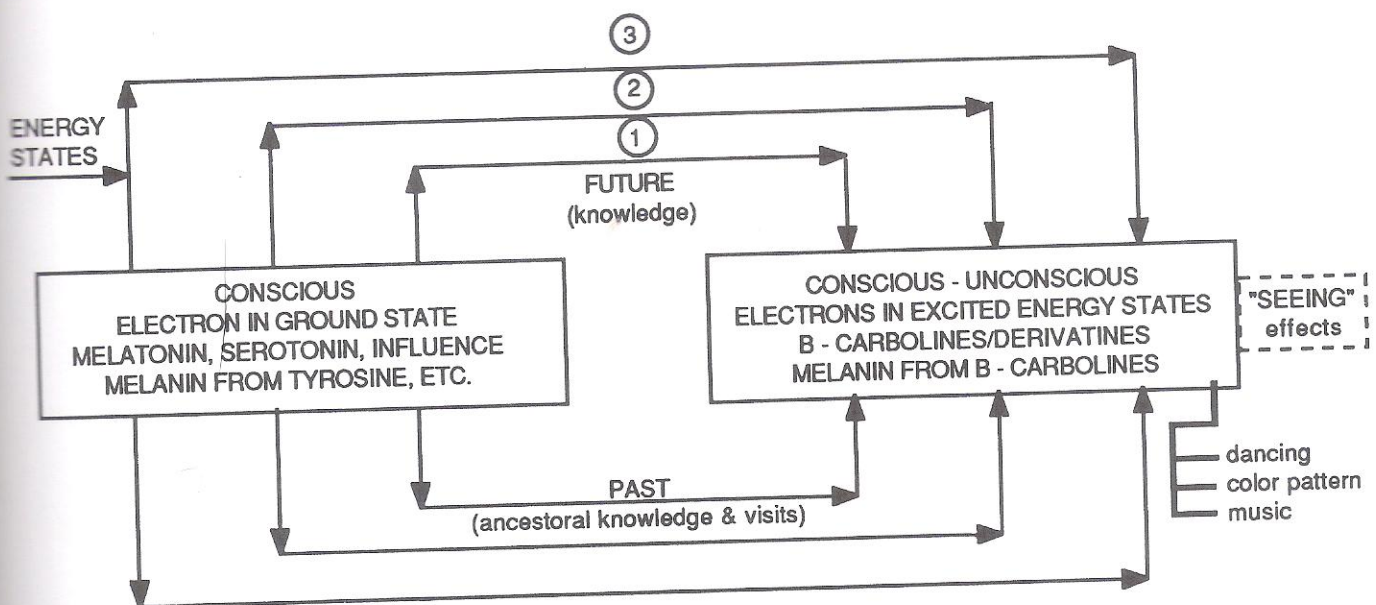
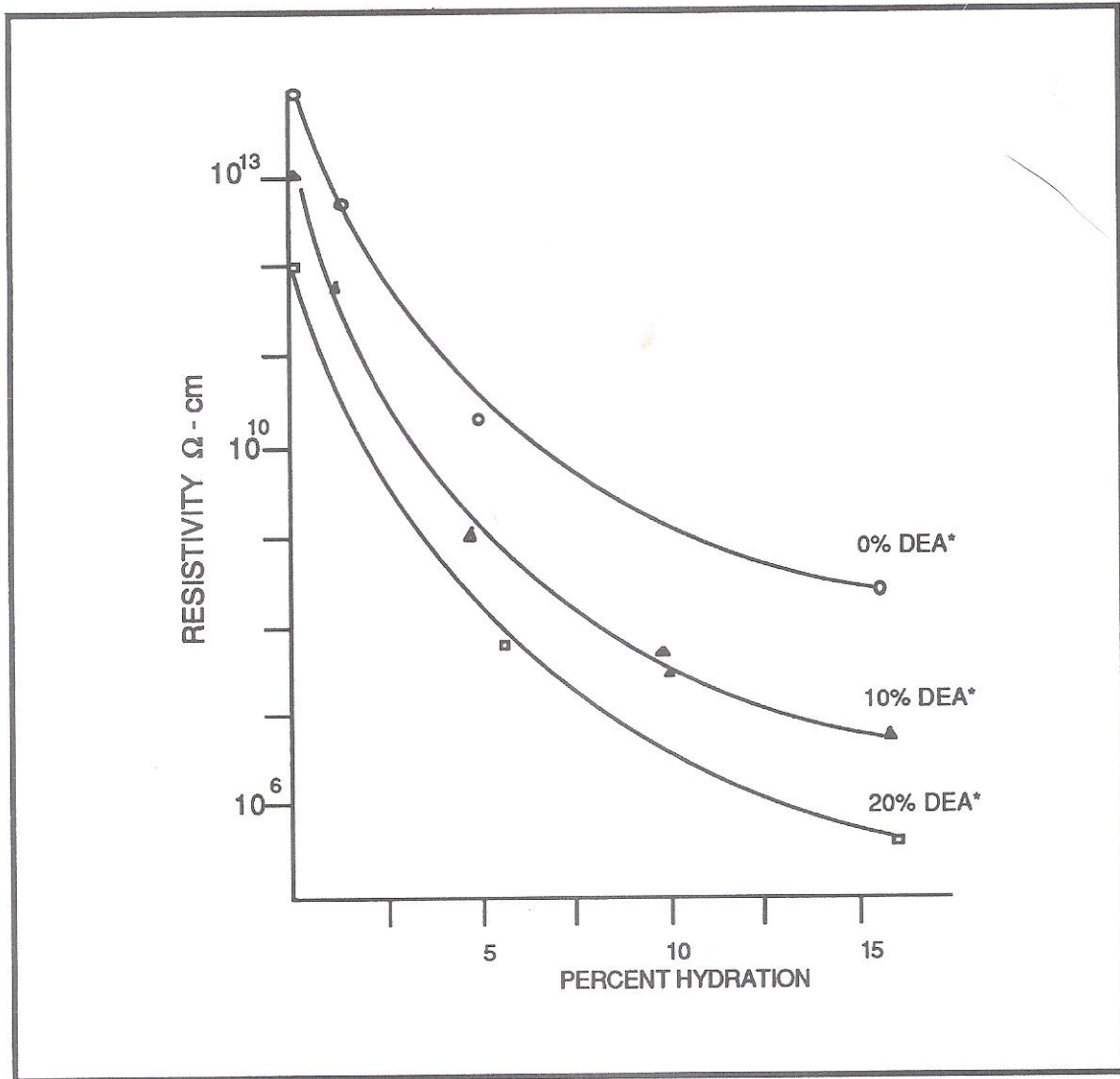


FIGURE 20

CHEMICAL INFLUENCE ON THE ELECTRICAL CONDUCTIVITY OF MELANIN



*Diethanolamine

MELANIN binds to a variety of chemicals and drugs. Table 2 and 3 outline a study conducted by Potts and Lindquist in 1962 and 1973. Both studies demonstrate the ability of MELANIN to bind various chemicals or drugs including the anti-malaria drug, chloroquine. Many of these chemicals evaluated in the study are used in the medical profession in the treatment of illnesses. It is anticipated that these drugs when used, cause electrons in MELANIN to go from the ground state to an excited state as explained earlier, thus causing psychological abnormalities, DNA damage and related illnesses.

Neuroleptic drugs such as phenothiazine derivatives and thioxanthenes are used by psychiatrists to treat mental disorders. These neuroleptic drugs cause various neurological effects such as those outlined in Table 4. These neurological actions are indicating that MELANIN is changing its energy state and may be producing toxic chemical species that could eventually lead to the destruction of MELANIN centers causing illness and death.

TABLE 2

THE BINDING OF SELECTED COMPOUNDS TO CHOROID MELANIN GRANULE
SUSPENSIONS AS DETERMINED BY POTTS (59)

Substance	Percent uptake (corrected for pigment batch)
Acridine orange	98
Neutral red	87
Methylene blue	87
Alizarin red	84
Chloroquine	82
Thionin	80
Malachite green	77
Safranin O	67
Nile blue A	59
Chloropromazine	52
Primulin	52
Prochlorperazine	50
Neutral violet	46
Janus green B	44
TZ - 11-S	43
Bromophenol blue	40
Tetramethyl-phenylenediamine	39
BP - 400-S	34
KS - 24-S	33
Quinine	31
Buffalo black	28
Biebrich scarlet	28
Aniline	26
6270-SKF	25
Fast green FCF	25
GS-95-S	21
Thioridazine	21
Trimeprazine	21
Oxytetracycline	11
Amitriptyline	10
Tryptophan	0
Glycine	0
Lysine	0
Glutamic acid	0
Pyridine	0
Hydroquinone	0
Hydroxynaphthoic acid	0
Methanol	0
Glucose	0

TABLE 3

THE ASSOCIATION OF OTOTOXICITY OF DRUGS WITH THEIR ABILITY TO BIND TO UVEAL MELANIN GRANULE SUSPENSIONS AS DETERMINED BY LINDQUIST (61)

Drug	Percent uptake of 2.5 umole
Kanamycin	89
Hydroxychloroquine	86
Chloroquine	85
Chlorpromazine	82
Quinine	68
Dihydrostreptomycin	65
Streptomycin	60
Viomycin	46
Isoniazid	0
PAS (p-aminosalicylic acid)	0
Salicylic acid	0

TABLE 4

NEUROLOGICAL EFFECT OF NEUROLEPTIC DRUGS (60)

REACTION	TYPE OF FEATURES	PROPOSED MAXIMAL RISK	MECHANISM	TREATMENT
Acute Dystonia	Spasm of muscles tongue, face, neck, back; may mimic seizures; not hysteria	1 to 5 Days	Unknown	Many treatments can alter, but effects of antiparkinsonian agents are diagnostic and curative
Parkinsonism	Bradykinesia, rigidity, variable tremor, mask facies, shuffling gait	5 to 30 Days	Antagonism of dopamine	Antiparkinsonian agents helpful
Akathisia	Motor restlessness; not anxiety or "agitation"	5 to 60 Days	Unknown	Reduce dose or change drug; antiparkinsonian agents or benzodiazepines may help
Tardive dyskinesia	Oral-facial dyskinesia; widespread choreoathetosis	After months or years of treatment (worse on withdrawal)	Excess function of dopamine hypothesized	Prevention crucial; treatment unsatisfactory
Perioral tremor ("rabbit" syndrome)	Perioral tremor (may be late variant of Parkinsonism)	After months or years of treatment	Unknown	Antiparkinsonian agents often help

HOW TOXIC DRUGS AND CHEMICALS AFFECT OR ALTER MELANIN'S ROLE AND LIFE FUNCTIONS

In the latter section, we discussed some of the conditions in our everyday lives that are controlled by MELANIN. Since all aspects of our lives are centrally involved and controlled by MELANIN it is important to keep all MELANIN CENTERS and organs containing MELANIN in the BLACK HUMAN functioning properly for good mental and physical health. The problem starts in the BLACK HUMAN when he does not incorporate the right cultural and social parameters into his everyday life. ONE SUCH EXAMPLE OF A MAJOR SCREW-UP BY THE BLACK HUMAN IS THE USE OF TOXIC DRUGS FOR PLEASURE AND RECREATION!

Let's take COCAINE for example! Every 24 hours in all of the major cities in the U. S. — in slums, middle class suburbs and the refined environment of the rich — approximately 10,000 new individuals are trying COCAINE for the first time. Thirty (30) million individuals have already tried COCAINE; four (4) million use it daily; and five (5) million are addicted and unless helped will face DEATH soon!

These figures are for COCAINE alone and do not include individuals who are using other toxic illegal drugs. The BLACK HUMAN counts for a very large portion of the figures cited for COCAINE use. A large segment of BLACK society responsible for providing leadership to the BLACK community is essentially neutralized. Children, teenagers, and young adults who have the responsibility to lead and provide for the well-being of BLACK society in the future are being lost before they can develop and apply their skills. Thus, our small force of BLACK professionals is reduced and the use of COCAINE will ensure that we will have an even smaller force of BLACK professionals in the future. BLACKS will continue to remain second class citizens, nonprofessional, and with no real political or economic power. If you combine racism and COCAINE (and other toxic drugs) into an organized offense, the BLACK HUMAN will continue to live in HELL (poor, hungry, uneducated, nonprofessional, powerless—no clout), or perish. **DOOMED** forever!!

COCAINE is obtained from the leaf of the Coca bush (0.6-1.8%). It grows widely in the Andes mountain (1,000 to 3,000 feet above sea level) in South America. One interesting aspect about COCAINE is that when it is ingested into the body by the chewing of the Coca leaves, acute overdosage, chronic toxicity, psychosis or patterns of dependence in which users neglect responsibilities is very rare. Also, there is little difficulty in discontinuing its use when Coca leaves are no longer available. This may indicate that COCAINE may not be dangerous if taken in the right form (chewing of Coca leaves instead of the highly purified or denatured forms that are used today). Other chemicals in the Coca leaf, as well as digestive enzymes, may eliminate the toxic effect of COCAINE upon ingestion. However, chewing of Coca leaves will cause rapid degradation (decaying) of the teeth.

Initially, COCAINE is taken for pleasure and an individual doesn't realize that he/she is gradually being led into a trap. COCAINE chemistry gradually eliminates some aspects of normal body chemistry until the individual's body depends totally on COCAINE for information and direction. Since COCAINE'S effects are short-term, users will devote most of their time and money towards obtaining more COCAINE. This leads to lower work or job performance and an increase in crime. Why? Addicts will find that they must devote more and more time toward gathering finances to supply their need for larger and larger doses of COCAINE with every session of COCAINE use.

"PUSHERS" have elected to supply users with a different un-natural form of COCAINE that is not ingested orally but nasally and intravenously. COCAINE used in this form is highly toxic to body metabolism because it is exposed to the cells in high concentrations and has not been changed chemically by digestive juices or enzymes. Users therefore become addicted faster and, in most cases, fatally.

COCAINE use is highly addictive and symptoms/effects from its use are many. COCAINE users may experience some of the following effects:

- *Significant rise in body temperature*
- *Pupil dilation due to blanching of the sclera*
- *Clouding, pitting and ulceration of the cornea of the eye*
- *Increased muscular performance even when an individual is tired or fatigued*

-
- *Nausea, vertigo and failure of the pulse*
 - *Hallucinations, increased reflexes, and violent mania/paranoid delusions*
 - *Death due to respiratory failure*
 - *Changes in mental/moral qualities*
 - *Loss of appetite/weight and sleeplessness*
 - *General failure of health*

MELANIN in the BLACK HUMAN is the central reason why he/she becomes addicted quicker and remains addicted longer.

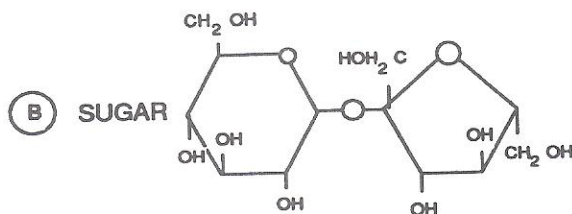
LIKES DISSOLVE LIKES

To better understand how these TOXIC DRUGS affect the chemical MELANIN, one must understand a few simple rules in chemistry. The first rule is:

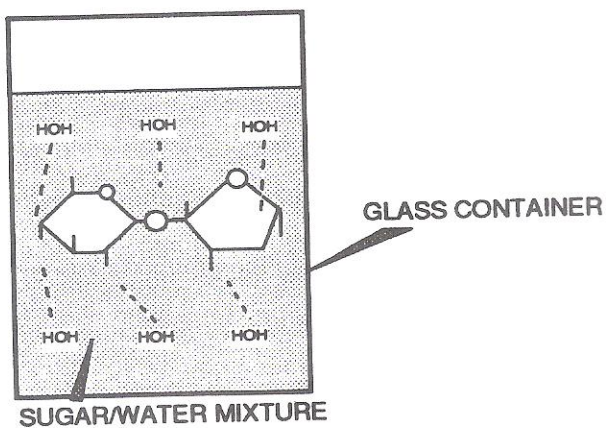
- "Likes attract Likes" or

"Likes dissolve Likes"

This simply means, if two chemicals have similar structures or functional groups, they will "like" or fall in "love" with one another. When they come in contact, physically and electromagnetically, they will "marry", (dissolve into), or chemically react with each other. A good example of this rule is when ordinary sugar is dissolved in water. (See illustration below.)



BLEND A&B TOGETHER



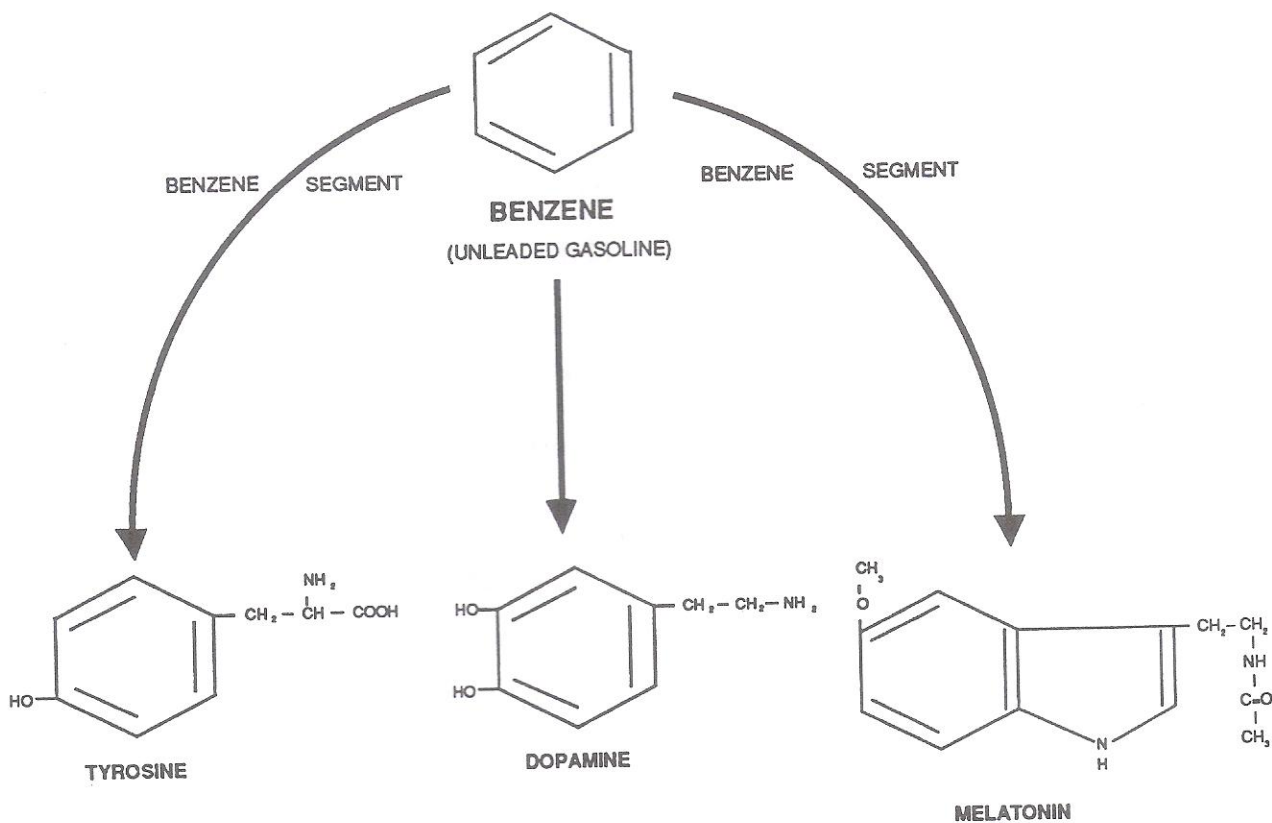
The main reasons sugar and water will “marry” or blend together are:

- *BOTH SUGAR AND WATER ARE POLAR
(CONDUCT ELECTRICITY)*
- *BOTH SUGAR AND WATER CONTAIN HYDROXYL
(OH) GROUPS*

Polar or polarity means that these chemicals will exist with an electrical charge on the structure. This is similar to a battery in that it has a positive (+) and negative (-) pole to provide enough of an energy imbalance to conduct an electrical current (yes, it is really true—sugar and water are chemicals and both will conduct an electrical current in solution). If both chemicals have polarity, and an electrical potential exists, then their similarities will cause both chemicals to “marry” (chemically react or mix)!

Once the marriage has taken place, the new mixture or chemical will show properties similar to both chemicals before the “marriage”, but properties different from any one of the two original chemicals. A hybrid is produced! The sugar goes from being a solid to a liquid like water and the water goes from tasting neutral to tasting sweet like sugar. This is what happens in the case of harmful drugs—A hybrid is produced!

Another way of looking at chemical similarities is in the case of a benzene molecule having affinity for amino acids utilized by the body. As cited earlier, benzene is one of the major components of unleaded gasoline used in your car. (Benzene causes cancer and should be avoided.) Upon contact with benzene, the body or area of contact should be immediately washed with plenty of soap and water. The BENZENE structure is also a major component of the structure of essential amino acids used by the body. These amino acids polymerize into MELANIN (See Figure 3, Page 13 and the following example.)



Therefore, any chemical species that contains the benzene (aromatic) group within its structure will have an attraction for MELANIN. Furthermore, amino acids contain primary, secondary, and tertiary amino groups in their chemical structure. These amino groups will also have affinity for similar amino groups in the MELANIN structure.

When a toxic drug like COCAINE and a "life chemical" like MELANIN "marry", a new species is created that has properties (traits) of MELANIN, as well as properties of the harmful drug (in this case COCAINE). The new chemical species formed from the "marriage" of MELANIN and the TOXIC DRUG generally cannot support life functions. An example of this may be shown in the case of COCAINE intoxication where certain neurotransmitters (brain signals) like serotonin and dopamine are depleted from the body. The body will try to use COCAINE to do the job of serotonin and dopamine because COCAINE is similar to these chemicals.

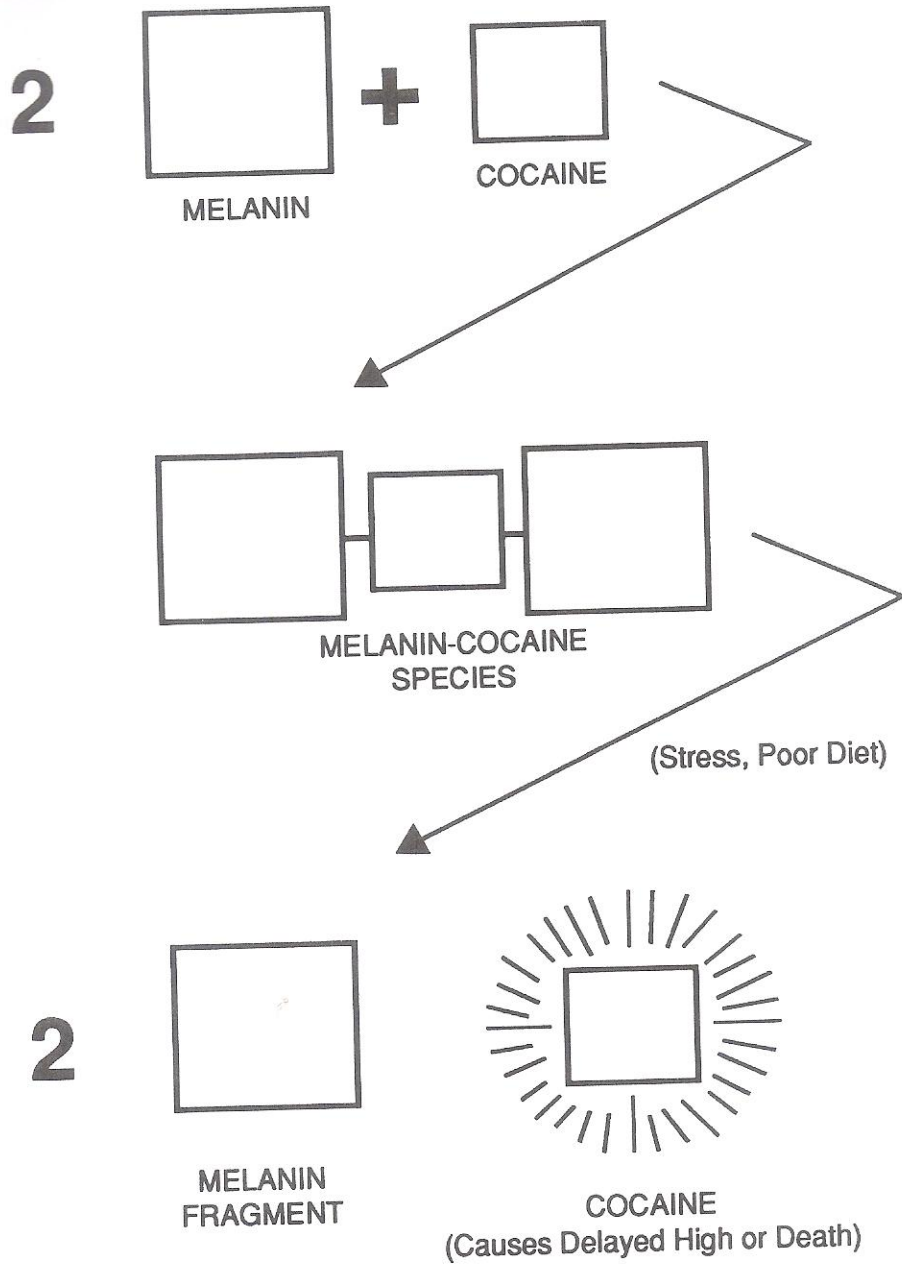
These chemicals are also major components of the MELANIN molecule which means COCAINE will blend with MELANIN. The concentration of MELANIN in the BLACK HUMAN is also reduced because MELANIN is a "store house" of neurotransmitters (brain signals) and may release them into

the body when other sources are depleted. MELANIN is also degraded or destroyed due to the formation of highly reactive radicals and light-emitting species in pigmented tissues or cells (35). When this happens, organs containing MELANIN may suffer due to a lack of the necessary concentration of MELANIN needed to promote vital "life" mechanisms within the BLACK HUMAN (37).

When the body has completely used up the COCAINE and it realizes that the "natural" chemicals (MELANIN, serotonin, dopamine, etc.) are not available for regular body metabolism, it triggers a reaction called "craving". This craving forces the individual to acquire more of the intoxicating drug. (This is where crime comes into the picture.) The body has really been tricked into thinking that the COCAINE chemical is MELANIN, serotonin, etc., due to the similarities in chemical structure.

Furthermore, a toxic chemical like COCAINE has the potential to co-polymerize into the MELANIN structure. Once the reaction is complete and the molecule becomes stable, it may remain intact in various MELANIN centers throughout the body for months (31,36,38). A significant event such as stress, poor diet, exposure to energy sources, or just normal body requirements, may trigger the MELANIN molecule to release the COCAINE that is now a part of its chemical structure into the blood or other reactive channels in the body. When this happens the amount of COCAINE released in the body is not controlled by the individual and may be in a large enough dosage to cause a delayed "trip", seizures or even sudden death. (See Figure 21.) What we are saying here is that once you start to use COCAINE and enough of this material gets incorporated into your MELANIN centers, you become a "WALKING TIME BOMB". Who knows when this depolymerization of MELANIN and COCAINE will occur and overdose the body. Many of our great athletes have "met their fate" or died in this manner. The "not so famous" who use COCAINE are also dying in this manner. These deaths are not publicized as COCAINE deaths because death may occur months later after the use of COCAINE and physicians may attribute the death to heart failure or some unknown source.

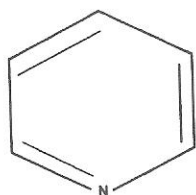
FIGURE 21



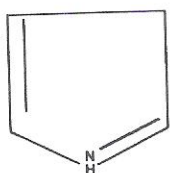
WHAT ARE ALKALOIDS?

In this Section, I would like to introduce another term to your chemical vocabulary. The new term is alkaloid! Alkaloid is a term used to represent a class of nitrogen based chemicals. They are cyclic heterogeneous hydrocarbons that contain a nitrogen atom(s) within their chemical structure. They are of plant origin but may be derived from nitrogen ring compounds such as:

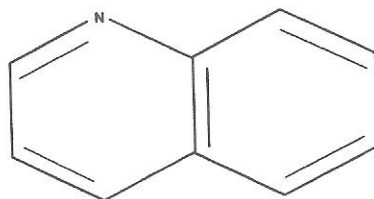
PYRIDINE



PYRROLE



QUINOLINE

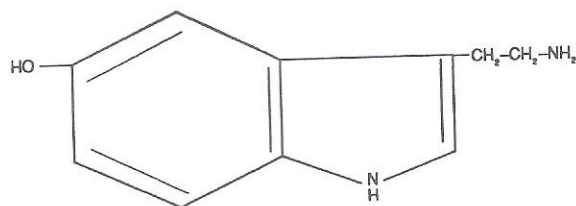


Alkaloids were known and used for centuries by ancient BLACK HUMANS in Africa—usually for religious ceremonies or medicines (39,40). They had been in use there long before organic chemistry developed in Europe and America. These substances have many physiological effects on the body, some of which are very toxic.

As shown in the previous chemical structures, the basic benzene (aromatic) structure is present in alkaloid derivatives also. This means that alkaloids (just like benzene) will have an affinity to chemically react with or dissolve into the structure of MELANIN. These alkaloids also contain the secondary amino group described earlier in this section.

EXAMPLES OF ALKALOIDS USED BY THE BODY FOR LIFE FUNCTIONS

In this section, I will show an example of alkaloids that occur naturally in the body. These alkaloids are produced by the PINEAL GLAND (see Figure 10), and are not harmful at normal concentrations (41). The first of these alkaloids is serotonin. Serotonin is secreted into the bloodstream by the pineal gland during daylight hours.

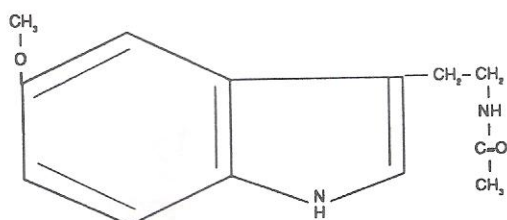


SEROTONIN

Some characteristics of serotonin:

- *IT IS SIMILAR TO HALLUCINOGENIC DRUGS SUCH AS
LSD
MESCALINE
PSILOCIN
PSILOCYBIN*
- *IT IS A POWERFUL BLOOD VESICLE CONSTRICTOR
OCCURRING IN THE BRAIN AND BLOOD PLATELETS*
- *IT PLAYS A PART IN REGULATING BLOOD PRESSURE*
- *IT CAUSES MUSCLES TO CONTRACT*
- *IT POLYMERIZES INTO MELANIN*

Melatonin is another alkaloid produced by the PINEAL GLAND (41). Melatonin is secreted into the blood stream in the dark hours of the evening (approximately 6 PM). It reaches its maximum concentration around 10 PM.



MELATONIN

Some characteristics of Melatonin:

- *IT INFLUENCES REPRODUCTIVE ORGANS AND SYNCHRONIZES BODY FUNCTIONS TO SUNLIGHT AND DARKNESS.*
- *IT APPEARS TO HAVE NO EFFECT ON BLOOD PRESSURE.*
- *IT INCREASES EEG ALPHA ACTIVITY.*
- *IT INDUCES SLEEP, IMAGERY (VISIONS) AND FEELINGS OF WELL-BEING AND ELATION.*
- *AT HIGH DOSAGES, IT STIMULATES CONTRACTION OF THE SMOOTH UTERINE MUSCLES AND THE SECRETION OF BREAST MILK .*
- *IMPROVES SYMPTOMS OF PARKINSONISM.*
- *IT POLYMERIZES INTO MELANIN.*

It appears from the structure and data outlined previously, that both serotonin and melatonin are natural alkaloids that have a variety of functions in the body and are present during daylight and night hours. These alkaloids execute their functions safely and are not toxic to the body in biological quantities. The fact that they are alkaloids (and a part of the MELANIN structure) make them very prone to reacting with toxic alkaloids such as COCAINE and LSD.

B-carbolines (honmalin) are natural alkaloids that are produced by the pineal gland via melatonin (39). These products are highly hallucinogenic and are believed to cause "out-of-the-body-experiences", religious trances, etc. I believe these products form a unique type of MELANIN. These unique types of MELANIN formed from the B-carbolines produce the psychoactive (magical) effects that are so predominate in BLACK society and culture. We should research this area and optimize all technology needed to perfect these psychological states.

HIGHLY TOXIC ALKALOIDS THAT ALTER THE CHEMICAL REACTIVITY OF MELANIN

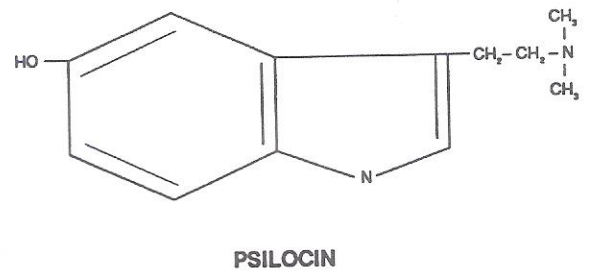
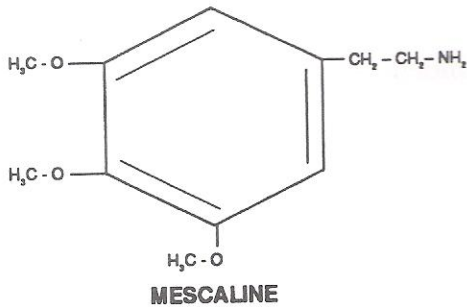
Figure 22 shows two toxic alkaloids—mescaline and psilocin—and compares their similarities in chemical structure to serotonin and melatonin. Notice that all four alkaloids contain the aromatic benzene structure as well as primary and secondary amino groups arranged in similar fashion. The highly polar nature of these species also enhances their reactivity toward MELANIN. These similarities are such that the body may substitute or utilize these toxic materials in place of the natural occurring alkaloids. If serotonin and melatonin are part of the MELANIN structure and are exposed to these toxic alkaloids, then they may chemically merge with MELANIN or dissolve into its structure thus altering its specific functions.

This is also true for COCAINE, MARIJUANA, and LSD. (See Figure 23.) All three of these highly toxic drugs contain alkaloids and ring structures that are similar to MELANIN and its precursors. Notice that the benzene molecule and the secondary amino groups are present in the structure of COCAINE, MARIJUANA, and LSD. Compare these toxic drugs to the cyclic ring structure of MELANIN outlined in Figure 3.

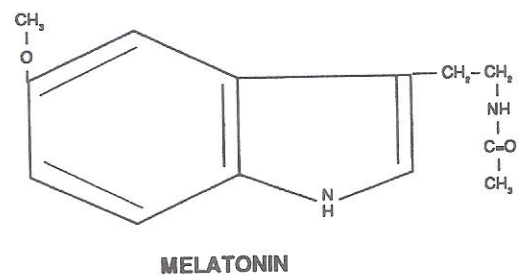
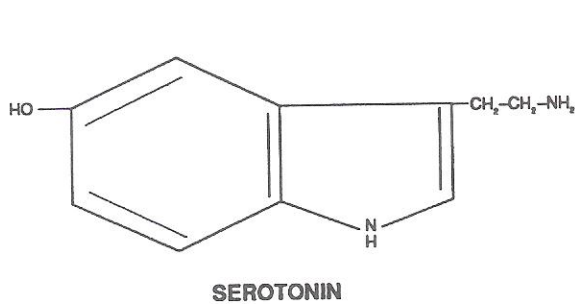
Many other Alkaloids are in use today in our society. (See Figure 23A.) Caffeine is found in coffee. Codeine and morphine are also used in the preparation of medicine.

FIGURE 22

TOXIC/USEFUL ALKALOIDS



- HALLUCINOGENIC DRUG SIMILAR TO LSD, COCAINE, ETC.
- HIGHLY TOXIC
- DERIVED FROM MEXICAN CACTUS AND CERTAIN MUSHROOMS

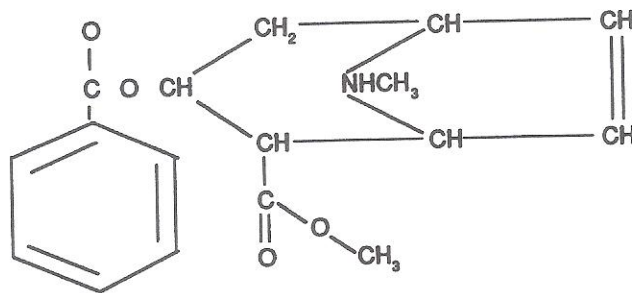


- SIMILAR TO HALLUCINOGENIC DRUGS LIKE LSD, MESCALINE, PSILOCIN, COCAINE, ETC.
- DERIVED FROM PINEAL GLAND/VIA DIET, ETC.

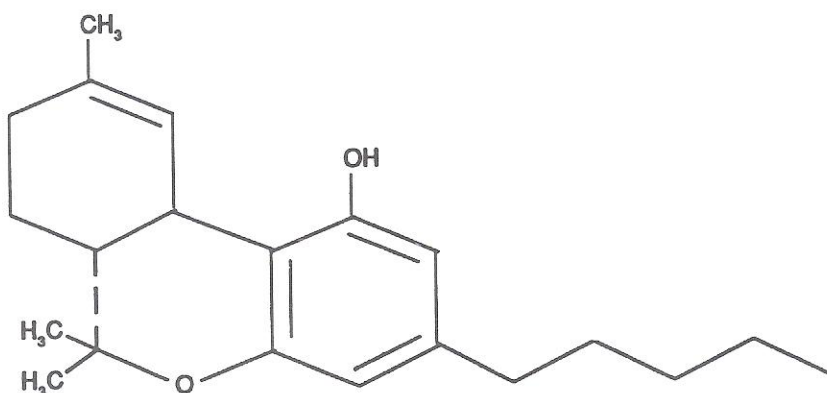
FIGURE 23

HARMFUL DRUGS THAT BIND TO AND ALTER THE CHEMICAL REACTIVITY OF MELANIN

COCAINE



MARIJUANA



LSD

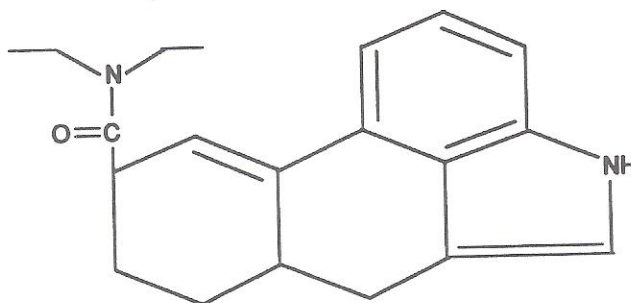


FIGURE 23A

HARMFUL DRUGS THAT BIND TO AND ALTER THE CHEMICAL REACTIVITY OF MELANIN

CONTINUED

- Codeine
- Morphine
- Caffeine
- Nicotine
- Strychnine
- Atropine
- Agent Orange (Dioxane)
- Amphetamines
- Paraquats
- Tetracyclines
- Neuroleptics
 - Phenothiazines
 - Butyrophenones (used to treat manic depression, schizophrenia)

Other chemicals such as 'agent orange" (Dioxane), amphetamines, paraquats, tetracyclines, neuroleptics (for treatment of psychosis), bind to and chemically react with MELANIN due to structural similarities (31,43,44,45,46,47,48,49,50,51,52). Agent orange and the paraquat's reaction products are irreversible. If the neuroleptic drugs bind to MELANIN, then a good question to ask is:

Are the dosages (in the concentration that is desired for maximum effectiveness) of neuroleptic drugs given to psychotic patients actually reaching the area of the brain where the problem exists?

If MELANIN is located in the gastrointestinal tract, then there is a possibility that neuroleptic drugs taken orally are not getting to the site in the brain where they are needed. Why? Because the MELANIN in the intestinal tract is absorbing or reacting with these drugs.

Discussions can be expanded on other drugs as well as the drugs cited in this report which could fill many volumes of books relative to their interaction with MELANIN and the toxifying effects they may cause. (See Table I and 2.) It is hoped that this brief review may stimulate further interest in the area, and that drug researchers as well as social and political researchers will adjust their projects to accommodate the facts presented in this report.

CONCLUSION

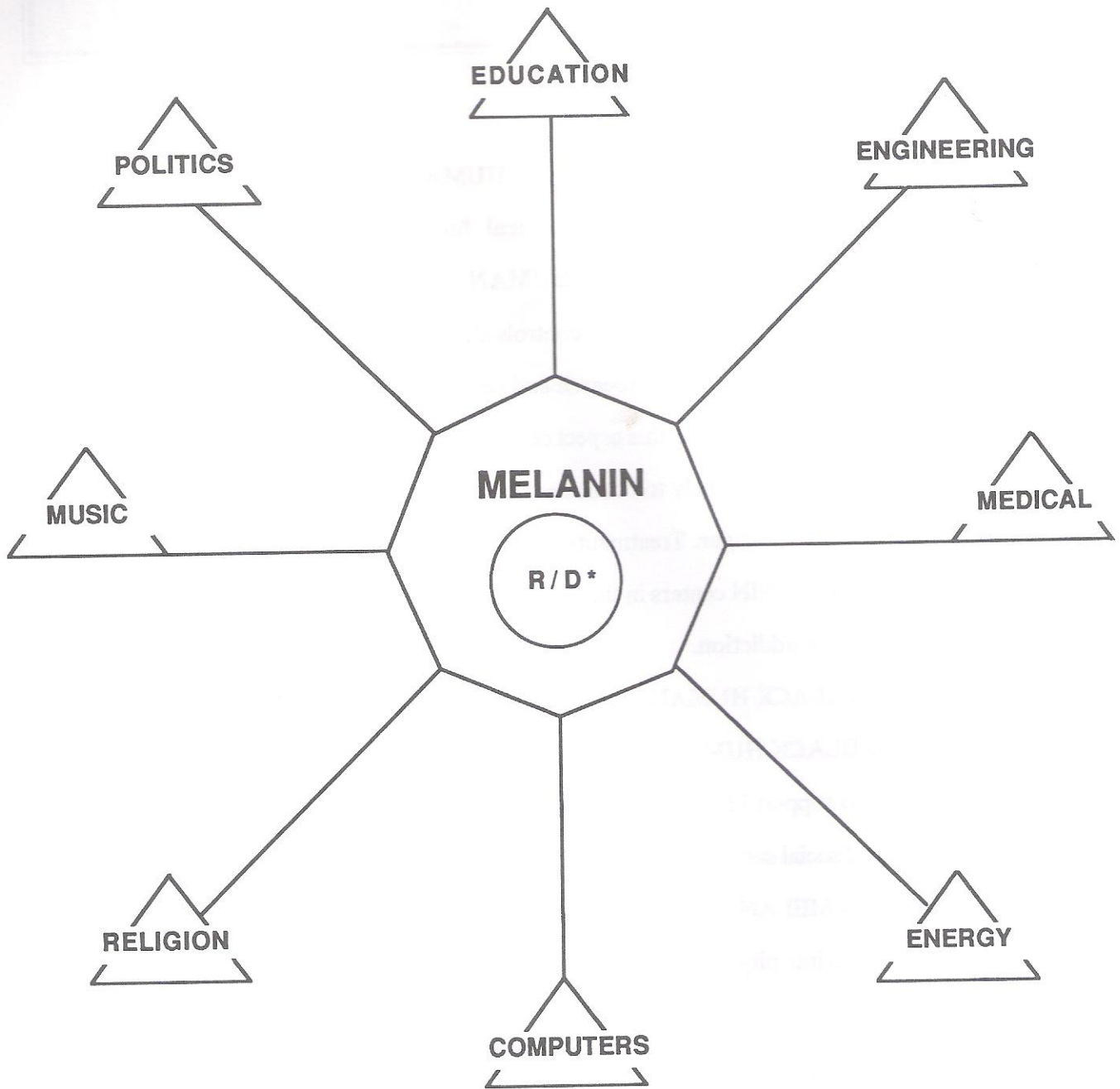
Planning research projects with the **BLACK HUMAN** and **MELANIN** as the central focal point may generate development of medical facts and social practices that will ensure good medical care for the **BLACK HUMAN** in the future.

It should also be understood that **MELANIN** controls all facets of our lives and all professions are influenced and controlled by its activity. Research and development programs should be designed with this in mind. A schematic outlining this aspect of **MELANIN** is shown in Figure 24. Drug abuse by the **BLACK HUMAN** is more likely to occur because **MELANIN** causes us to become addicted faster. It also keeps us addicted longer. Treatment centers for drug abuse should understand the effects of **TOXIC DRUGS** on **MELANIN** centers in the **BLACK HUMAN**. This will enable them to design better programs for treating addiction.

Most of the time the **BLACK HUMAN** dies of **COCAINE** use before he realizes he has a problem or is in danger. We as **BLACK HUMANS** should always remember that the chemical **MELANIN** is an excellent molecule to support life. It is the key to virtually all life functions and whenever we do things in our cultural and social surroundings that are not conducive to **MELANIN'S** functions, all areas of the body supported by **MELANIN** will suffer. Healthy minds and bodies will lose their sharpness and perfection and decline into physical and mental disorders which include low brain power and poor health.

The **MELANIN** molecule with its multifunctional properties show many avenues for the commercial development of products that may be appropriate for medical use as well as products for use in the home, office, automotive industry, chemical industry, capturing solar energy, fashions, research and development; the potential is limitless. To develop the many areas where **MELANIN** may have commercial appeal will require in-depth attention by chemists and other researchers.

FIGURE 24



* Research and Development

The understanding that MELANIN is the Key to Knowledge, is your beginning of Knowledge. Fools will despise this wisdom and reject further instructions!!!!

Mr. Carol Barnes

GLOSSARY

ADRENALINE - A chemical produced by the adrenal gland in the body. It can also be produced synthetically by man and is used in research/development and some commercial processes. Another name for adrenaline is Epinephrine.

Adrenaline also has the reputation for inducing "Superhuman" strength momentarily in humans!

AFROCENTRIC - To view the world in all of its facets from an African perspective. This simply means dropping the European approach to history, science, religion, culture, education, music, dancing, engineering, politics, law, morals, dress, appearance, etc., and accepting/practicing the version of ancient/modern African society. (Modern African society also includes BLACK Americans.)

AGENT ORANGE - Known in the chemical industry as "Dioxane". It is used commercially in the herbicide industry as a defoliating agent. (It causes plants to shed their leaves.)

ANTHRAQUINONE - Intermediate for dyes and organics.

AROMATIC - The benzene molecule used in chemistry to represent a particular character or functional group. When a chemical is aromatic in character, it will usually have the benzene compound as part of its structure.

BIOPOLYMER - (*BIO = LIFE; POLY = MANY; MER = UNIT*) Biopolymer means *many life units* and is used in this report to indicate that many units of small chemical species have been linked together to produce a chain that contains a large number of units. The final product is utilized in the body to aid in the production and continuation of life. Common biopolymers are: MELANIN, Proteins, DNA.

CATECHOLAMINES - A general term used to represent a number of chemicals that include and are derived from Norepinephrine and Epinephrine.

COPOLYMERIZE - To incorporate several different chemical units into the chemical structure of a plastic or rubber to obtain a specific property.

CYTOSKELETON - The outer membrane of the cell that consist of the microtubes, the microfilament and the intermediate filament. The cytoskeleton and the plasma membrane are usually referred to as the cell surface-modulating assembly.

DEPOLYMERIZATION - To break a polymer (plastic) down into the small chemical units from which it was prepared.

DOPAMINE - A chemical species that can be prepared synthetically from tyrosine or DOPA. It is also produced in the body by various glands and is utilized by the body for various life functions.

EPINEPHRINE - Commonly referred to as adrenaline and is part of the Catecholamine family. (See Adrenaline.)

FLAVIN - A yellowish-blue water soluble chemical that is prepared from isoalloxazine. Derivatives of flavin such as riboflavin are important vitamin sources.

FLAVONAL - A flavone (crystalline ketone) derivative that contains a hydroxyl (OH) group in its structure. Found in the leaves, stems and seed capsules of many primroses. Also used as dyestuffs (yellow paint pigment).

GENETIC CODE - Chemical information stored in a protein (DNA, etc.). This information is used to manufacture various chemicals for use in the body. Once these chemicals are made and used then an individual or race will exhibit particular properties as a result of those chemicals performing that life function.

GLIAL CELL - Glue type cells that usually support other tissues and are intermingled with neuron tissue such as the brain, spinal cord, and ganglia.

GLYCOCALYX - Antenna-like projections that extend outside the cell into the extra cellular matrix. They are polymeric structures that consist of glycoproteins, glycolipids and glycosaminoglycons and aid the cell in recognizing environmental influences.

HERBICIDES - Chemicals used in the control and killing of plant life or vegetation.

HYBRID - A compound that contains two or more heterogeneous (unsimilar) substances as part of its structure.

INDOLEAMINE - Crystalline compounds made in the body from tryptophan. They are also decomposition products of protein. **Indoleamine** may be obtained from foods such as cabbages, bananas, cauliflower and orange juice.

INTEGUMENTAL - Term used in the medical profession to represent skin on the surface of the body.

LOCUS COERULEUS - A functional center located at the point where the upper end of the spinal cord and lower portion of the brain are attached.

LYSOSOMES - Organelle located inside the cell. It resembles a sac and contains enzymes that are hydrolytic (love water) in nature.

MELANOCYTES - Black cells that contain the enzyme, etc. that are needed to manufacture MELANIN.

MELANOSOME - An organelle located inside the Melanocyte and the site where MELANIN is manufactured.

MELATONIN - An Indoleamine produced by the pineal gland and is found in high concentrations in the blood stream during the night.

MID-BRAIN RETICULAR FORMATION - System or pathway from the lower level of the brain to the cortex or pathway for information processing.

MITOCHONDRIA - An organelle located inside the cell which is responsible for producing heat through its chemical metabolism.

MESCALINE - A toxic alkaloid that is derived from plants such as the Mexican cactus and certain mushrooms.

NAPHTHQUINONE - Polymerization regulator for rubber and polyester resins; synthesis of dyes and pharmaceuticals; fungicide; algicide.

NEUROLEPTIC - Drugs used in treating mental disorders such as psychosis, because of their tranquilizing properties.

NEUROMELANIN - MELANIN that is located in the brain and other internal organs. It is normally manufactured in the body from Catecholamines.

NEUROTRANSMITTER - Chemical units such as Catecholamines, L-DOPA, Melatonin, Serotonin, etc., that carry or transport information to other sites in the body.

NOREPINEPHRINE - Commonly referred to as Noradrenaline. It is a part of the Catecholamine family.

PARAQUATS - These chemicals are quaternary ammonium salts that are ionically charged.

PEROXIDASE - A catalyst or enzyme used in the manufacture of MELANIN and other chemicals needed in metabolic processes.

PHENYLALANINE - A dietary chemical that comes from meats such as steak, etc. It is a precursor to MELANIN and can cause high blood pressure.

PINEAL GLAND - The "MASTER" gland of the body responsible for manufacturing various chemicals and proteins for proper body function. It is also responsible for "seeing" other energy states.

POLYCYCLICQUINONE - These are high molecular weight or long chain polymers that are prepared from cyclicquinone and may be considered to be a form of MELANIN.

POLYMERIZE - To link or connect small units together to form a chain or large complex.

PONTINE RETICULAR FORMATION - Turns on cortex (or monitoring screen) of the brain; middle portion.

PSILOCIN - This chemical is hallucinogenic and is similar to LSD and Cocaine. It is found in the Mexican cactus and certain mushrooms.

PTERIDINES - A crystalline bicyclic base ($C_6H_4N_4$) that is a structural component of animal pigment (MELANIN).

QUINONE - Yellow crystal material, soluble in alcohol and used in the manufacture of dyes and fungicides.

SEROTONIN - An Indoleamine produced by the pineal gland and is found in high concentrations in the blood stream during the day.

SUBSTANIA NIGRA - A BLACK area located in the brain that coordinates and fine-tunes movement. It is saturated with MELANIN.

TETRACYCLINES - These compounds are crystalline bases that have a faint yellow color, are odorless and slightly bitter. They are derivatives of polycyclic naphthacenecarboxamide and are used in medicine for their anti-microbial activity.

TYROSINASE - A catalyst (enzyme) consisting of a complex between copper and a high molecular weight protein containing about seventy amino acids.

TYROSINE - A chemical produced in the body from phenylalanine through the action of the tyrosinase catalyst. It is a precursor to MELANIN and is the main component of EU-MELANIN.

VENTRAL LEGMENTAL AREA - The parts of the pons that is toward the back of the head; forms the roof of the fourth ventral.

VISCERAL - Organs located in the trunk of the body such as the stomach, heart, intestine.

REFERENCES

1. Barr, F. E., "Melanin: The Organizing Molecule", Medical Hypothesis, Vol. 11:1, March 1983.
2. Edelstein, L. M., "Melanin - A Unique Biopolymer", Pathobiology Annual, Vol. 1, pp 311; 312, 1971.
3. Aethschirle, M. S., Hegedus, Z. L. "The Importance of Studying Visceral Melanins", Clinical Pharm. and Therap. 19 (2): P. 126, 1976.
4. Pathak, M. A., Activation of the Melanocyte System by Ultraviolet Radiation and Cell Transformation, Annals of the New York Academy of Science, The Medical and Biological Effects of Light, Vol. 453, pp. 328-338, September, 1985.
5. Hawley Gessner, G., The Condensed Chemical Dictionary 10th Edition, Van Nostrand Reinhold Company, New York, New York p. 1120, 1981.
6. Morison, W. L., "What Is The Function of MELANIN?", Arch Dermatol, Vol. 121, pp. 1160-1163, September 1985.
7. Aiken, G. R., McKinght, D.M., etc., "Humic Substances In Soil Sediment and Water" John Wiley & Son, Inc. 1985.
8. Szent-Gyorguje, Albert, Bioelectronics, Science, Vol. 161, September 1968.
9. McGinness, J., Proctor, P., "The Importance of The Fact That Melanin is Black", J. Theor. Biol., Vol. 39, pp. 677-678.
10. Lucky, P. A., Nordlund, J. J., "The Biology of the Pigmentary System and Its Disorders", Dermatologic Clinics, Vol. 3 (2) April 1985.
11. Majur, A., Harrow, B., Text of Biochemistry, W. B. Saunders Company, Philadelphia, PA., pp. 451-459, 1981.
12. Kaidbey, K. H., Agin, P. P., etc., "Photoprotection by Melanin-A Comparison of Black and Caucasian Skin", J. American Acad. Dermatol., Vol. 1 (3), September 1979.

13. Nordlund, J. J., "The Lines of Pigment Cells", Dermatologic Clinics, Vol. 4 (3), July 1986.
14. Sams Jr., W. M., "Sun-Induced Aging", Dermatologic Clinics, Vol. 4 (3) July 1986.
15. Garber, S. R., King, R.A. etc., "Auditory Brainstem Anomalies in Human Albinos" Science, Vol. 209 (12) September 1980.
16. Potten, C. S., "Melanocytes and Radiation-Induced Changes in Pigmentation" in Radiation and Skin, Taylor & Francis Inc. Philadelphia, PA., 1985.
17. Swan, G. A., "Current Knowledge of Melanin Structure", Pigment Cell, Vol. 1, pp. 151-157, 1973.
18. McGinness, J. E., "Mobility Gaps: A Mechanism for Band Gaps in Melanins", Science Vol. 177, p. 896, September 1972.
19. Mizutani, U., Massalski, T.B., "Low Temperature Specific Heat Anomalies in Melanins and Tumor Melanosomes, Nature , Vol. 259, pp. 505-507, February 1976.
20. McGinness, J.E., Corry, P. M. and Proctor, P., "Amorphous Semiconductor Switching in Melanins", Science Vol. 183, March 1974.
21. McGinness, J. E., Corry P.M., "Thermal and Electronic Contribution to Switching in Melanins", Biopolymers, Vol. 15, pp. 2309-2312, 1976.
22. Strezelecka, T., "Semiconductor Properties of Natural Melanins", Physiol. Chem. Phys., 14 (1982).
23. Curzon, G., "Metals and Melanin In the Extrapyrmidal Center", Pharm. Therap. B, Vol. 1(4), pp. 673-684, 1975.
24. Cotzias, G. C., etc., "Melanogenesis and Extrapyrmidal Diseases", Federation Proceeding, Vol. 23, pp. 713-718, 1964.
25. Gan, E. V., Lam, K. M., etc. "Oxidizing and Reducing Properties of Melanins", British Journal of Dermatology, 96(25), 1977.
26. Gan, E. V., etc. "Electron Transfer Properties of Melanin", Archives of Biochemistry and Biophysics 173, pp. 666-672, 1976.
27. Lerner, E. J., "Why Can't A Computer Be More Like A Brain?", High Technology, pp. 34-41, August, 1984.

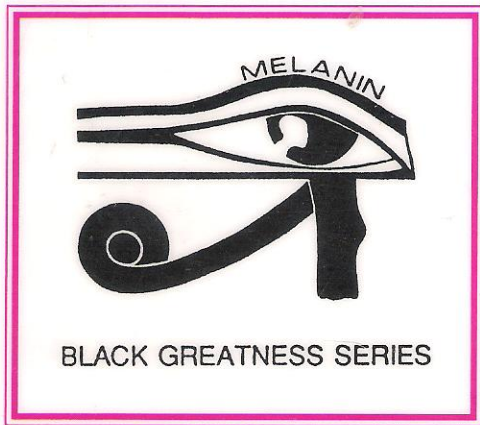
-
28. Stewart, M., San Francisco State University (Private Communication).
 29. Holland, E., "Ohio's Mummies: Breaking Centuries of Silence", The Ohio State University Quest Vol. 6, No. 41, Summer 1984.
 30. Roders, A. D., Curzon, G., "Melanin Formation By Human Brain In Vitro", Journal of Neurochemistry, vol. 24, pp. 1123-1129, 1975.
 31. Ings, R.M.J., "The Melanin Binding of Drugs and Its Implications", Drug Metabolism Reviews 15 (5 & 6), pp. 1183-1212, 1984.
 32. Ducla-Soares, Eduardo, "Biological Effects of Magnetic Fields and Cooperative Phenomena", International Journal of Quantum Chemistry, Vol. XVII, pp. 1043-1046, 1980.
 33. Nagle, W., "Evidence of Photon Emission From DNA in Living Systems", International Journal of Quantum Chemistry, Vol. XVII, pp. 1043-1046, 1980.
 34. Fraser, A., Frey, A. H., "Electromagnetic Emission of Micron Wavelengths from Active Nerves", Biophysical Journal, Vol. 8, pp. 731-734 1968.
 35. Slavinska, D., Slavinski, J., "Electronically Excited Molecules in the Formation and Degradation of Melanins", Physical. Chem. Phys., Vol. 14, pp. 363-374, 1982.
 36. Baweja, R., etc. , "Competitive Binding Between Cocaine and Various Drugs to Synthetic Levodopa Melanin", Journal of Pharmaceutical Science, Vol. 66(11); p. 1544-1547, 1977.
 37. Proctor, P., McGinness, J., Corry, P., "A Hypothesis on the Preferential Destruction of Melanized Tissue", J. Theor. Biol., Vol. 48, pp. 19-22, 1974.
 38. Patil, P. N., "Cocaine-binding by the Pigmented and the Non-pigmented Iris and its Relevance to The Mydriatic Effect", Investigative Ophthalmology, Vol. 11(9), pp. 739-746, 1972.
 39. Airaksinen, M. M., Kari, I., "B-Carbolines, Psychoactive Compounds In The Mammalian Body", Medical Biology, Vol. 59, pp. 21-34, 1981.
 40. Serena, M.R.D., "Some Speculations on a Possible Psychic Effect of Harmaline", Theoretical Papers , pp. 120-123, in Research In Parapsychology, Seventy-eighth annual Convention of the Parapsychological Association, Weiner, D.H., Radin, D.I., ed., 1985.

41. Quay, W. B., *Pineal Chemistry*, Charles Thomas, Springfield, Ill. 1974.
42. Vaughan, G. M., "Melatonin In Humans", In Pineal Research Review, Vol. 2, pp. 141-201, Alan R. Liss, Inc., New York, N.Y., 1984.
43. Larsson, B., Tjolve, H., "Studies on the Mechanism of Drug-Binding to Melanin", Biochemical Pharmacology, Vol. 28, pp. 1181-1187, 1979.
44. Salazar, M. M., "Significance of the Interaction of Drugs with Melanin", Pharmacology, pp. 3908 B, 3909 B, 1976.
45. Salazar, M., etc., "Binding of Dopaminergic Drugs by the Neuromelanin of the Substantia Nigra, synthetic Melanins and Melanin Granules", Federation Proceeding, Vol. 37 (10), pp 2403-2407, August 1978.
46. Cotzias, G. C. etc, "Melanogenesis and Extrapyrmidial Diseases", Federation Proceeding, Vol. 23, pp. 713-718, 1964.
47. Shimada, K., etc., "Binding Characteristics of Drugs to Synthetic Levodopa Melanin", Journal of Pharmaceutical Science, Vol. 65(7), pp. 1057-1060, July 1976.
48. Lyttkens, L., etc., "Accumulation of Substances with Melanin Affinity to the Internal Ear", Adv. Oto-Rhino-Laryng, Vol. 25, pp. 17-25 (Karger, Basel 1979).
49. Blois, M. S., "The Binding Properties of Melanin In Vivo and In Vitro", Dept. of Dermatology, University of California School of Medicine, San Francisco, California.
50. Harrison, W. H., "Incorporation of D-amphetamine into Pigmented Guinea-pig Hair", British Journal of Dermatology, Vol. 91, pp. 415-418, 1974.
51. Potts, A. M., "The Concentration of Phenotrazine in the Eye of Experimental Animals", Investigative Ophthalmology, Vol. 1(4), pp. 522-530 August 1962.
52. Salazar, M., etc., "Iris Pigmentation and Atropine Mydriasis", The Journal Pharmacology and Experimental Therapeutics, Vol. 197(1), 1976.
53. Barrow, Gordon M., "Physical Chemistry, 2nd Edition, McGraw Hill, Inc. New York, N.Y., 1966.
54. Heikkila, R. E. and Cabat, F. S., "Chemoluminescence from Auto-oxidizing 6-hydrokydopamine: The involvement of activated forms of oxygen." Photochem. Photobiol., 28, 667 (1978).

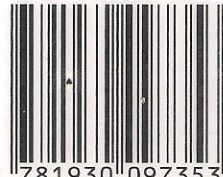
-
55. Borg, D. C., Schaick, K.M., Elmore, Jr., J. J. and Bell, J. A., "Cytotoxic Reactions of Free Radical Species of Oxygen", Photochem. Photobiol., 28, 887 (1978).
 56. Proctor, P. H., Hilton, J. G., and McGinness, J. E., "Meeting on Biophysics and Biological Functions of Melanins", Parma., 3-4, March (1980).
 57. Graham, Doyle G., "On the Origin and Significance of Neuromelanin", Arch. Pathol. Lab Med., Vol. 103, pp. 359-362, July 1979.
 58. Bednar, Jaroseav, "Review: Electronic Excitations in Condensed Biological Matter", Int. J. Radiat. Biol., Vol. 48(2), pp. 147-166, 1985.
 59. Potts, A.M., Trans Am. Ophthalmol. Soc., 60, 517 (1962).
 60. Goodman, A., Gilman, L., etc., The Pharmacological Basis of Therapeutics, 6th Edition, MacMillian Publishing, New York, 1980
 61. Corry, P.M., etc., "Semiconductor Properties of Melanins Related to Preferential killing of Melanoma Cells", Pigment Cell, vol. 2, pp. 321-326 (Karger, Basel 1976).

NOTES

NOTES



ISBN 1-930097-35-2



9 781930 097353

5 1595 >

