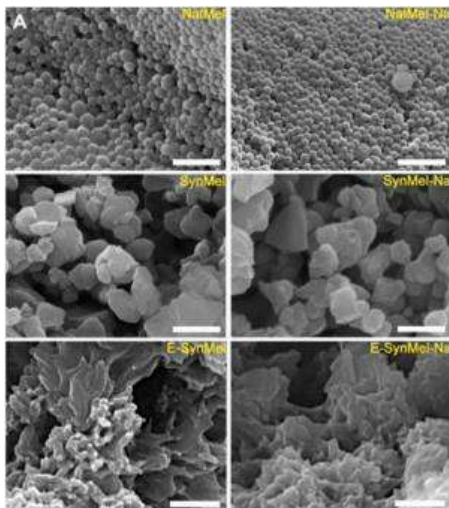


Research team uses melanin to make biodegradable battery anode

December 10, 2013 by Bob Yirka, Phys.org report

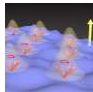



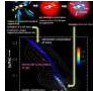


Structural characterization of eumelanins. SEM images of pristine natural (NatMel), Na⁺ -loaded natural (NatMel-Na), synthetic (SynMel), Na⁺ -loaded synthetic (SynMel-Na), electro-deposited (E-SynMel), and Na⁺ -loaded electrodeposited ... more

(Phys.org) —A team of researchers from Carnegie Mellon University and the University of Oregon has used melanin as an ingredient in a cocktail that led to the creation of a biodegradable battery anode. In their paper published in *Proceedings of the National Academy of Sciences*, the team describes how they created the anode and to what purpose it might be put in the near future.

Over the past several decades, [medical researchers](#) have been working on a way to create devices that can remain inside the human body, without the risk of causing harm. One such example is the pace-maker. It sits inside the chest, monitoring [heart activity](#) and delivers a small jolt when needed to keep the heart beating on a proper rhythm. Though it's doubtless saved many lives, it also constitutes a health hazard—there are materials inside its case that upon escape could cause serious harm. Some of the most hazardous are in the battery, and that's why researchers are working so hard to find a way to build one that is not only non-toxic, but is also biodegradable. In this new effort, the researchers have taken a step towards that ultimate goal by creating a battery component that is made from a material that is created naturally by the human body—[melanin](#).

Melanin is a material that exists in the skin of humans and other animals, and is responsible for the creation of pigments. In its natural state it exists as a group of disordered extended hetero-aromatic polymer networks, which means it's a great material for holding a relatively large amount of ions. To use it as part of a battery, the team added it to a few other ingredients to create a mix that could be poured onto a steel mesh after adding [sodium ions](#). The battery that resulted, the team found, was capable of discharging for up to five hours, though admittedly, offering less power than traditional batteries.

Featured	Last comments	Popular
	Research team finds evidence of matter-matter coupling 1	Aug 23, 2018
	Researcher helps crack decades-old math problem 14	Aug 24, 2018
	A novel graphene quantum dot structure takes the cake 2	Aug 23, 2018
	Researchers achieve multifunctional solid-state quantum memory 0	Aug 24, 2018
	Stars memorize rebirth of our home galaxy 5	Aug 22, 2018

[more »](#)

Phys.org on Facebook

[Like](#) 1.4M people like this. [Sign Up](#) to see what your friends like.

Email newsletter

email

Subscribe

Relevant PhysicsForums posts

[Phonons and Crystal Momentum](#) 8 hours ago

[Two questions on Feynman diagram and Green's function](#) 14 hours ago

[Form factors and Interaction term of the Action](#) 16 hours ago

[Question about the Debye model of solids](#) Aug 24, 2018

The entire battery was not biodegradable of course, which means much more work needs to be done before such a battery might be used with an [implantable medical device](#). Possible uses for such a device range from monitoring wounds and/or blood pressure to the delivery of drugs to specific body parts.

Explore further: Researchers show how to keep cathode material 'in line' to enhance battery performance

More information: Biologically derived melanin electrodes in aqueous sodium-ion energy storage devices, *PNAS*, Published online before print December 9, 2013, DOI: [10.1073/pnas.1314345110](#)

Abstract

Biodegradable electronics represents an attractive and emerging paradigm in medical devices by harnessing simultaneous advantages afforded by electronically active systems and obviating issues with chronic implants. Integrating practical energy sources that are compatible with the envisioned operation of transient devices is an unmet challenge for biodegradable electronics. Although high-performance energy storage systems offer a feasible solution, toxic materials and electrolytes present regulatory hurdles for use in temporary medical devices. Aqueous sodium-ion charge storage devices combined with biocompatible electrodes are ideal components to power next-generation biodegradable electronics. Here, we report the use of biologically derived organic electrodes composed of melanin pigments for use in energy storage devices. Melanins of natural (derived from *Sepia officinalis*) and synthetic origin are evaluated as anode materials in aqueous sodium-ion storage devices. Na⁺-loaded melanin anodes exhibit specific capacities of 30.4 ± 1.6 mAhg⁻¹. Full cells composed of natural melanin anodes and λ -MnO₂ cathodes exhibit an initial potential of 1.03 ± 0.06 V with a maximum specific capacity of 16.1 ± 0.8 mAhg⁻¹. Natural melanin anodes exhibit higher specific capacities compared with synthetic melanins due to a combination of beneficial chemical, electrical, and physical properties exhibited by the former. Taken together, these results suggest that melanin pigments may serve as a naturally occurring biologically derived charge storage material to power certain types of medical devices.

Journal reference: [Proceedings of the National Academy of Sciences](#)

0 shares

[feedback to editors](#)

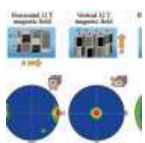
© 2013 Phys.org

[How come electrons and phonons lead to the heat equation?](#) Aug 22, 2018

[Why are more x-rays made from metal than glass](#) Aug 22, 2018

[More from Atomic and Condensed Matter](#)

Related Stories



Researchers show how to keep cathode material 'in line' to enhance battery performance

November 19, 2013

The ever-increasing market for portable electronic devices such as laptops, cell phones and MP3 players has resulted in an equally heavy demand for secondary batteries—more commonly known as rechargeable batteries—Lithium-ion ...

Recommended for you



Pushing the plasma density limit

August

24, 2018

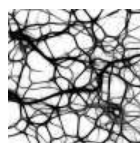
For decades, researchers have been exploring ways to replicate on Earth the physical process of fusion that occurs naturally in the sun and other stars. Confined by its own strong gravitational field, the sun's burning plasma ...



Inexpensive material boosts battery capacity

October 23, 2013

Battery-powered cars offer many environmental benefits, but a car with a full tank of gasoline can travel further. By ...



The dimension of a space can be inferred from the abstract network structure

August 24, 2018

Networks describe relations between objects. They show how objects relate to one another and which ones are mutually influential. In this context, how does space impact structure?

User comments

Commenting is closed for this article.

We recommend

Dialysis device removed Ebola from patient's blood

Sharon Worcester, Chest Physician

CPAP alternative? Implantable device cut OSA severity

Mary Ann Moon, Chest Physician

PULMONARY PERSPECTIVES®: Is 3D printing of organs the future? Creating a biologic 3D trachea

Adnan M. Al-Ayoubi, Chest Physician

Performance of Electronic Prediction Rules for Prevalent Delirium at Hospital Admission

Christopher W. Halladay et al., JAMA Network Open

CMS, FDA Furthering Healthcare Transparency for All

Weatherby Healthcare

How To Prepare For Your First Locum Tenens Assignment

CompHealth

Powered by **TREND MD**

Top	Help	Science X Account	Feature Stories	Android app	Connect
Home	FAQ	Sponsored Account	Latest news	iOS app	
Search	About	Newsletter	Week's top	Amazon Kindle	
Mobile version	Contact	RSS feeds	Archive	Push notification	